

For Research Use Only

# GSDMD Polyclonal antibody

Catalog Number: 20770-1-AP

Featured Product

364 Publications



## Basic Information

### Catalog Number:

20770-1-AP

### Concentration:

550 ug/ml

### Source:

Rabbit

### Isotype:

IgG

### Immunogen Catalog Number:

AG14757

### GenBank Accession Number:

BC008904

### GeneID (NCBI):

79792

### UNIPROT ID:

P57764

### Full Name:

gasdermin D

### Calculated MW:

484 aa, 53 kDa

### Observed MW:

50-53 kDa

### Purification Method:

Antigen affinity purification

### Recommended Dilutions:

WB: 1:2000-1:10000

IP: 0.5-4.0 ug for 1.0-3.0 mg of total protein lysate

IHC: 1:50-1:500

IF/ICC: 1:50-1:500

FC (Intra): 0.40 ug per 10<sup>6</sup> cells in a 100 µl suspension

## Applications

### Tested Applications:

WB, IHC, IF/ICC, FC (Intra), IP, ELISA

### Cited Applications:

WB, IHC, IF, IP

### Species Specificity:

human, mouse, rat

### Cited Species:

human, mouse, rat, pig, rabbit, bovine, hamster

**Note-IHC: suggested antigen retrieval with TE buffer pH 9.0; (\*) Alternatively, antigen retrieval may be performed with citrate buffer pH 6.0**

### Positive Controls:

WB: A431 cells, NIH/3T3 cells, Jurkat cells, C6 cells, rat liver tissue, rat brain tissue

IP: THP-1 cells,

IHC: human ovary cancer tissue, mouse lung tissue

IF/ICC: HeLa cells,

FC (Intra): Jurkat cells,

## Background Information

GSDMD is a 53 kDa cytosolic protein and a member of the gasdermin protein family, which features 6 members in humans (GSDMA, -B, -C, -D, -E and -F. GSDMD was identified as the executioner of inflammasome-associated pyroptosis. Caspase-1, -11, or -4 cleave GSDMD after an aspartate residue within a central linker domain (D275 in humans and D276 in mice) to generate a 31-kDa N-terminal GSDMD fragment (GSDMD-NT) and a 22-kDa C-terminal fragment (GSDMD-CT). In addition to the canonical 31/22 kDa cleavage products, a 43 kDa fragment has been observed under specific experimental or pathological conditions. The generation of the 43 kDa fragment was observed upon caspase-3 and -7 activation during apoptosis. This antibody can only detect full length GSDMD.

## Notable Publications

Author	Pubmed ID	Journal	Application
Xuye Jiang	34630100	Front Pharmacol	WB
Jun Tao	33010604	Placenta	WB
Youliang Wang	31608008	Front Endocrinol (Lausanne)	IHC

## Storage

### Storage:

Store at -20°C. Stable for one year after shipment.

### Storage Buffer:

PBS with 0.02% sodium azide and 50% glycerol, pH7.3

Aliquoting is unnecessary for -20°C storage

For technical support and original validation data for this product please contact:

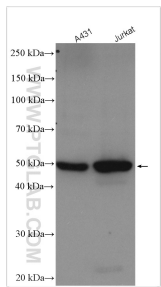
T: 4006900926

E: [Proteintech-CN@ptglab.com](mailto:Proteintech-CN@ptglab.com)

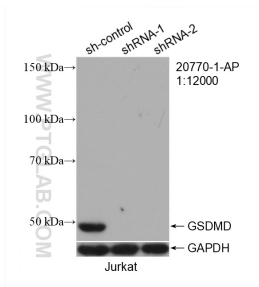
W: [ptgcn.com](http://ptgcn.com)

This product is exclusively available under Proteintech Group brand and is not available to purchase from any other manufacturer.

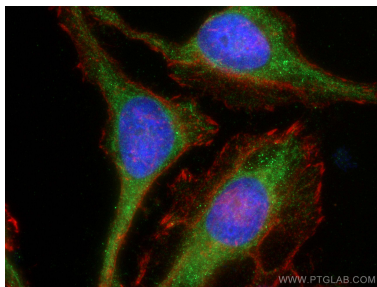
Selected Validation Data



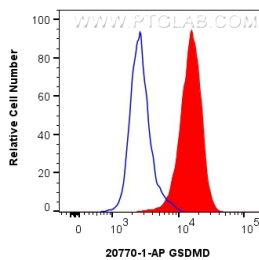
Various lysates were subjected to SDS PAGE followed by western blot with 20770-1-AP (GSDMD antibody) at dilution of 1:5000 incubated at room temperature for 1.5 hours.



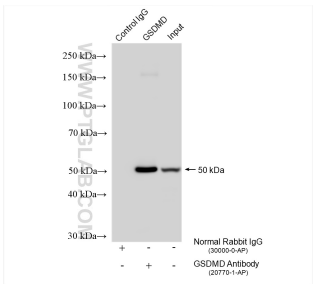
WB result of GSDMD antibody (20770-1-AP; 1:12000; incubated at room temperature for 1.5 hours) with sh-Control and sh-GSDMD transfected Jurkat cells.



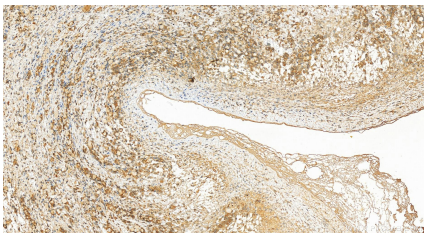
Immunofluorescent analysis of (-20°C Ethanol) fixed HeLa cells using GSDMD antibody (20770-1-AP) at dilution of 1:200 and CoraLite®488-Conjugated AffiniPure Goat Anti-Rabbit IgG(H+L), CL594-Phalloidin (red).



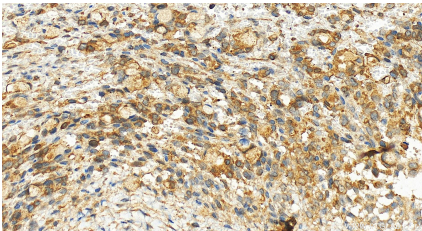
1x10<sup>6</sup> Jurkat cells were intracellularly stained with 0.4 ug GSDMD Polyclonal antibody (20770-1-AP) and CoraLite®488-Conjugated Goat Anti-Rabbit IgG(H+L) (SA00013-2)(red), or 0.4 ug Rabbit IgG control Rabbit PolyAb (30000-0-AP) (blue). Cells were fixed with 4% PFA and permeabilized with Flow Cytometry Perm Buffer (PF00011-C).



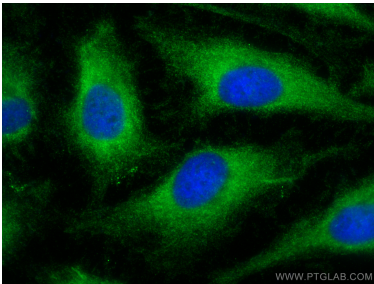
IP result of anti-GSDMD (IP:20770-1-AP, 4ug; Detection:20770-1-AP 1:4000) with THP-1 cells lysate 1560 ug.



Immunohistochemical analysis of paraffin-embedded human ovary cancer tissue slide using 20770-1-AP (GSDMD antibody) at dilution of 1:200 (under 20x lens). Heat mediated antigen retrieval with Tris-EDTA buffer (pH 9.0).



Immunohistochemical analysis of paraffin-embedded human ovary cancer tissue slide using 20770-1-AP (GSDMD antibody) at dilution of 1:200 (under 20x lens). Heat mediated antigen retrieval with Tris-EDTA buffer (pH 9.0).



Immunofluorescent analysis of (-20°C Ethanol) fixed HeLa cells using GSDMD antibody (20770-1-AP) at dilution of 1:400 and CoraLite®488-Conjugated AffiniPure Goat Anti-Rabbit IgG(H+L) (SA00013-2).