

For Research Use Only

ROCK2-Specific(C-term) Polyclonal antibody

Catalog Number:20248-1-AP

Featured Product

21 Publications



Basic Information

Catalog Number: 20248-1-AP	GenBank Accession Number: NM_004850	Purification Method: Antigen affinity purification
Concentration: 400 µg/ml	GeneID (NCBI): 9475	Recommended Dilutions: WB: 1:200-1:1000
Source: Rabbit	UNIPROT ID: O75116	IHC: 1:20-1:200
Isotype: IgG	Full Name: Rho-associated, coiled-coil containing protein kinase 2	IF/ICC: 1:10-1:100
	Calculated MW: 161 kDa	
	Observed MW: 164 kDa	

Applications

Tested Applications: WB, IHC, IF/ICC, ELISA	Positive Controls:
Cited Applications: WB, IHC, IF	WB : HeLa cells, mouse brain tissue, rat brain tissue
Species Specificity: human, mouse, rat	IHC : human colon tissue, human brain tissue
Cited Species: human, mouse, rat	IF/ICC : HepG2 cells,
Note-IHC: suggested antigen retrieval with TE buffer pH 9.0; (*) Alternatively, antigen retrieval may be performed with citrate buffer pH 6.0	

Background Information

ROCK2 is a serine/threonine kinase that regulates cytokinesis, smooth muscle contraction, the formation of actin stress fibers and focal adhesions, and the activation of the c-fos serum response element. It is an isozyme of ROCK1, is a target for the small GTPase Rho. ROCK2 is localized in both cytoplasm and nucleus, and the nucleus-localized ROCK2 can target p300 for phosphorylation to regulate its acetyltransferase activity (PMID:16574662). This antibody is specific to ROCK2.

Notable Publications

Author	Pubmed ID	Journal	Application
Jiong Yue	27637803	Exp Neurol	WB,IHC,IF
Jiong Yue	31495513	Brain Dev	WB,IHC
Yanting Zou	29115372	Int J Mol Med	WB

Storage

Storage:
Store at -20°C. Stable for one year after shipment.
Storage Buffer:
PBS with 0.02% sodium azide and 50% glycerol, pH7.3
Aliquoting is unnecessary for -20°C storage

For technical support and original validation data for this product please contact:

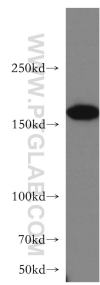
T: 4006900926

E: Proteintech-CN@ptglab.com

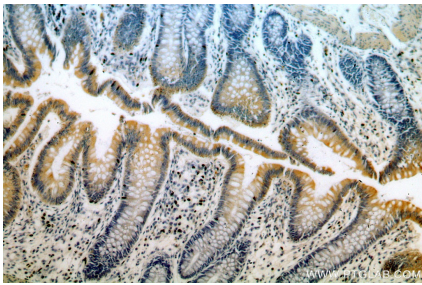
W: ptgcn.com

This product is exclusively available under Proteintech Group brand and is not available to purchase from any other manufacturer.

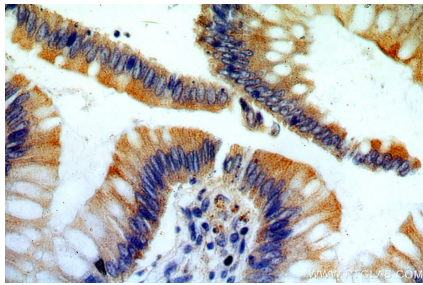
Selected Validation Data



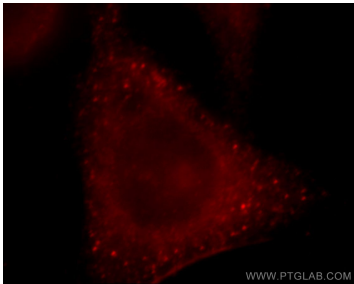
HeLa cells were subjected to SDS PAGE followed by western blot with 20248-1-AP (ROCK2-Specific(C-term) antibody) at dilution of 1:400 incubated at room temperature for 1.5 hours.



Immunohistochemical analysis of paraffin-embedded human colon using 20248-1-AP (ROCK2-Specific(C-term) antibody) at dilution of 1:100 (under 10x lens).



Immunohistochemical analysis of paraffin-embedded human colon using 20248-1-AP (ROCK2-Specific(C-term) antibody) at dilution of 1:100 (under 40x lens).



Immunofluorescent analysis of HepG2 cells, using ROCK2 antibody 20248-1-AP at 1:25 dilution and Rhodamine-labeled goat anti-rabbit IgG (red).