

For Research Use Only

ITPR1-specific Polyclonal antibody

Catalog Number: 19962-1-AP

32 Publications



Basic Information

Catalog Number:

19962-1-AP

Concentration:

600 ug/ml

Source:

Rabbit

Isotype:

IgG

GenBank Accession Number:

NM_001099952

GeneID (NCBI):

3708

UNIPROT ID:

Q14643

Full Name:

inositol 1,4,5-trisphosphate receptor, type 1

Calculated MW:

314 kDa

Observed MW:

290-300 kDa

Purification Method:

Antigen affinity purification

Recommended Dilutions:

WB: 1:1000-1:8000

IP: 0.5-4.0 ug for 1.0-3.0 mg of total protein lysate

IHC: 1:50-1:500

FC (Intra): 0.20 ug per 10⁶ cells in a 100 µl suspension

Applications

Tested Applications:

WB, IHC, FC (Intra), IP, ELISA

Cited Applications:

WB, IHC, IP

Species Specificity:

human, mouse, rat

Cited Species:

human, mouse, rat, chicken, sheep, duck

Note-IHC: suggested antigen retrieval with TE buffer pH 9.0; (*) Alternatively, antigen retrieval may be performed with citrate buffer pH 6.0

Positive Controls:

WB : HepG2 cells, mouse brain tissue, mouse liver tissue, L02 cells, rat brain tissue

IP : mouse brain tissue,

IHC : human brain tissue, human testis tissue, mouse brain tissue

FC (Intra) : HepG2 cells,

Background Information

ITPR1, also named as INSP3R1 and IP3R, belongs to the InsP3 receptor family. It is a receptor for inositol 1,4,5-trisphosphate which is a second messenger that mediates the release of intracellular calcium. Defects in ITPR1 are the cause of spinocerebellar ataxia type 15 (SCA15). The antibody has no cross reaction with ITPR2 and ITPR3.

Notable Publications

| Author | Pubmed ID | Journal | Application |
|---------------|-----------|------------------------|-------------|
| Yuxiang Wang | 35881904 | J Cardiovasc Pharmacol | WB,IP |
| Xiaolong Wang | 29800586 | Toxicology | WB |
| Ming Yang | 31060900 | EBioMedicine | WB |

Storage

Storage:

Store at -20°C. Stable for one year after shipment.

Storage Buffer:

PBS with 0.02% sodium azide and 50% glycerol, pH7.3

Aliquoting is unnecessary for -20°C storage

For technical support and original validation data for this product please contact:

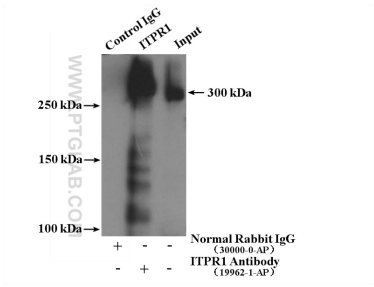
T: 4006900926

E: Proteintech-CN@ptglab.com

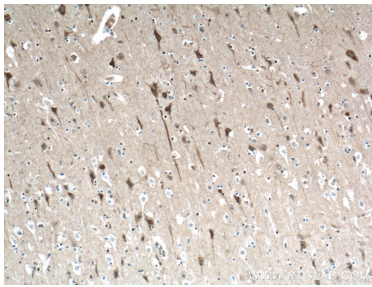
W: ptgcn.com

This product is exclusively available under Proteintech Group brand and is not available to purchase from any other manufacturer.

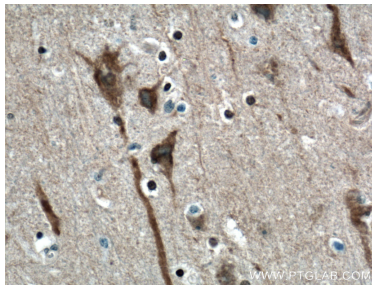
Selected Validation Data



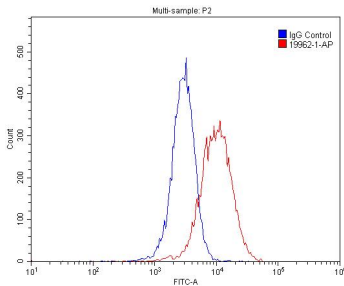
IP result of anti-ITPR1-specific (IP:19962-1-AP, 4ug; Detection:19962-1-AP 1:300) with mouse brain tissue lysate 3160 ug.



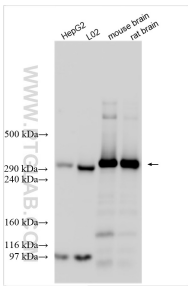
Immunohistochemical analysis of paraffin-embedded human brain tissue slide using 19962-1-AP (ITPR1-specific antibody) at dilution of 1:200 (under 10x lens. Heat mediated antigen retrieval with Tris-EDTA buffer (pH 9.0).



Immunohistochemical analysis of paraffin-embedded human brain tissue slide using 19962-1-AP (ITPR1-specific antibody) at dilution of 1:200 (under 40x lens. Heat mediated antigen retrieval with Tris-EDTA buffer (pH 9.0).



1X10⁶ HepG2 cells were stained with 0.2 ug ITPR1-specific antibody (19962-1-AP, red) and control antibody (blue). Cells were fixed with 4% PFA and permeabilized with 0.1% Triton X-100. Alexa Fluor 488-conjugated AffiniPure Goat Anti-Rabbit IgG(H+L) with dilution 1:1500.



Various lysates were subjected to SDS PAGE followed by western blot with 19962-1-AP (ITPR1-specific antibody) at dilution of 1:4000 incubated at room temperature for 1.5 hours.