

For Research Use Only

Nestin Polyclonal antibody

Catalog Number: 19483-1-AP **118 Publications**



Basic Information

Catalog Number:

19483-1-AP

Concentration:

600 ug/ml

Source:

Rabbit

Isotype:

IgG

GenBank Accession Number:

NM_006617

GeneID (NCBI):

10763

UNIPROT ID:

P48681

Full Name:

nestin

Calculated MW:

177 kDa

Observed MW:

170-180 kDa

Purification Method:

Antigen affinity purification

Recommended Dilutions:

WB: 1:500-1:1000

IHC: 1:200-1:800

IF/ICC: 1:50-1:500

FC (Intra): 0.40 ug per 10⁶ cells in a 100 µl suspension

Applications

Tested Applications:

WB, IHC, IF/ICC, FC (Intra), ELISA

Cited Applications:

WB, IHC, IF

Species Specificity:

human, mouse, rat

Cited Species:

human, mouse, rat, monkey, zebrafish

Note-IHC: suggested antigen retrieval with TE buffer pH 9.0; (*) Alternatively, antigen retrieval may be performed with citrate buffer pH 6.0

Positive Controls:

WB : mouse brain tissue, rat brain tissue

IHC : human kidney tissue, human gliomas tissue

IF/ICC : SH-SY5Y cells, U-251 cells

FC (Intra) : SH-SY5Y cells,

Background Information

Nestin, also named as NES and Nbla00170, is a class VI intermediate filament protein expressed in stem cells of the central nervous system (CNS) but not in mature CNS cells. Its expression is used extensively as a marker for neural lineage cells derived from human embryonic stem (hES) and induced pluripotent stem (iPS) cells. Nestin is also expressed in non-neural stem cell populations such as pancreatic islet progenitors and hematopoietic progenitors. Nestin can be detected as 220-240 kDa and 240-280 kDa. Studies point toward nestin heavy posttranslational modifications as possibly serving particular functions in podocytes and in a few other particular cell types (PMID: 17210924).

Notable Publications

Author	Pubmed ID	Journal	Application
Chenlong Li	31558707	Cell Death Dis	WB
Lili Ma	36132985	J Immunol Res	IF
Jiansheng Chen	31511040	J Exp Clin Cancer Res	WB

Storage

Storage:

Store at -20°C. Stable for one year after shipment.

Storage Buffer:

PBS with 0.02% sodium azide and 50% glycerol, pH7.3

Aliquoting is unnecessary for -20°C storage

For technical support and original validation data for this product please contact:

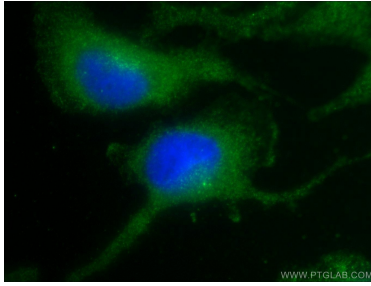
T: 4006900926

E: Proteintech-CN@ptglab.com

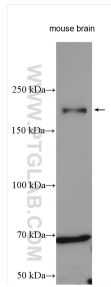
W: ptgcn.com

This product is exclusively available under Proteintech Group brand and is not available to purchase from any other manufacturer.

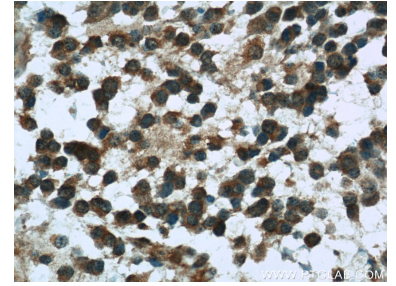
Selected Validation Data



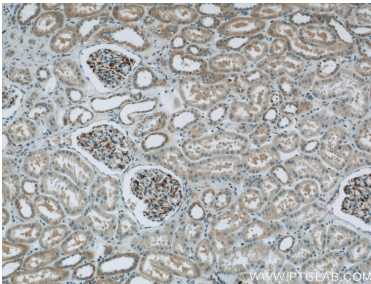
Immunofluorescent analysis of U-251 cells using 19483-1-AP (Nestin antibody) at dilution of 1:25 and Alexa Fluor 488-conjugated AffiniPure Goat Anti-Rabbit IgG(H+L).



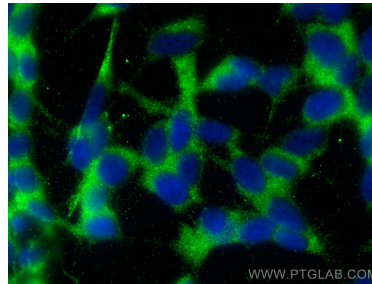
Mouse brain lysates were subjected to SDS PAGE followed by western blot with 19483-1-AP (Nestin antibody) at dilution of 1:500 incubated at room temperature for 1.5 hours.



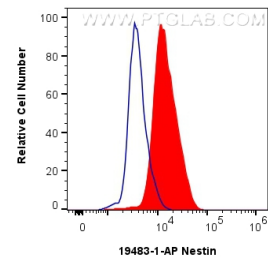
Immunohistochemical analysis of paraffin-embedded human gliomas tissue slide using 19483-1-AP (Nestin Antibody) at dilution of 1:100 (under 40x lens).



Immunohistochemical analysis of paraffin-embedded human kidney tissue slide using 19483-1-AP (Nestin Antibody) at dilution of 1:400 (under 10x lens).



Immunofluorescent analysis of (-20°C Ethanol) fixed SH-SY5Y cells using Nestin antibody (19483-1-AP) at dilution of 1:200 and Coralite® 488-Conjugated AffiniPure Goat Anti-Rabbit IgG(H+L).



1×10^6 SH-SY5Y cells were intracellularly stained with 0.4 ug Nestin Polyclonal antibody (19483-1-AP) and Coralite® 488-Conjugated AffiniPure Goat Anti-Rabbit IgG(H+L) (SA00013-2)(red), or 0.4 ug Rabbit IgG control Rabbit PolyAb (30000-O-AP) (blue). Cells were fixed with 4% PFA and permeabilized with Flow Cytometry Perm Buffer (PF00011-C).