

For Research Use Only

# SLC24A4 Polyclonal antibody

Catalog Number: 18992-1-AP

Featured Product

6 Publications



## Basic Information

Catalog Number:

18992-1-AP

Concentration:

600 µg/ml

Source:

Rabbit

Isotype:

IgG

GenBank Accession Number:

NM\_153646

GeneID (NCBI):

123041

UNIPROT ID:

Q8NFF2

Full Name:

solute carrier family 24  
(sodium/potassium/calcium  
exchanger), member 4

Calculated MW:

69 kDa

Observed MW:

62-90 kDa

Purification Method:

Antigen affinity purification

Recommended Dilutions:

WB: 1:2000-1:16000

IHC: 1:50-1:500

IF-P: 1:50-1:500

## Applications

Tested Applications:

WB, IHC, IF-P, ELISA

Cited Applications:

WB, IHC, IF

Species Specificity:

human, mouse

Cited Species:

human, mouse, rat

**Note-IHC: suggested antigen retrieval with  
TE buffer pH 9.0; (\*) Alternatively, antigen  
retrieval may be performed with citrate  
buffer pH 6.0**

Positive Controls:

WB: mouse brain tissue, HeLa cells, mouse heart tissue

IHC: mouse brain tissue, human heart tissue

IF-P: mouse eye tissue,

## Background Information

SLC24A4, also named as NCKX4, belongs to the sodium/potassium/calcium exchanger family. SLC24A4 transports 1 Ca<sup>2+</sup> and 1 K<sup>+</sup> in exchange for 4 Na<sup>+</sup>. Genetic variations in SLC24A4 are associated with skin/hair/eye pigmentation type 6 (SHEP6).

## Notable Publications

Author	Pubmed ID	Journal	Application
Akane Inoue	34592494	Bone	IHC
A L J J Bronckers	26403673	J Dent Res	IHC, IF
A L J J Bronckers	27752731	Calcif Tissue Int	WB

## Storage

Storage:

Store at -20°C. Stable for one year after shipment.

Storage Buffer:

PBS with 0.02% sodium azide and 50% glycerol, pH7.3

Aliquoting is unnecessary for -20°C storage

For technical support and original validation data for this product please contact:

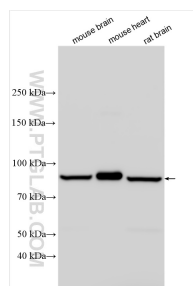
T: 4006900926

E: [Proteintech-CN@ptglab.com](mailto:Proteintech-CN@ptglab.com)

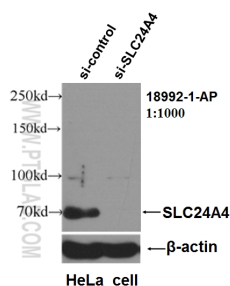
W: [ptgcn.com](http://ptgcn.com)

**This product is exclusively available under Proteintech Group brand and is not available to purchase from any other manufacturer.**

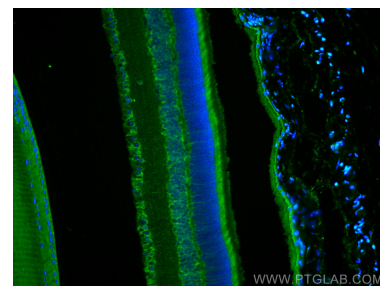
## Selected Validation Data



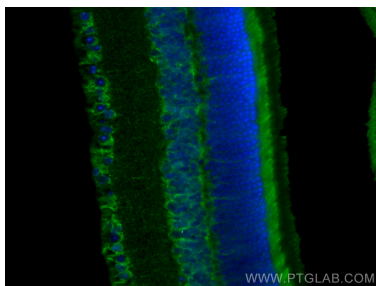
Various lysates were subjected to SDS PAGE followed by western blot with 18992-1-AP (SLC24A4 antibody) at dilution of 1:8000 incubated at room temperature for 1.5 hours.



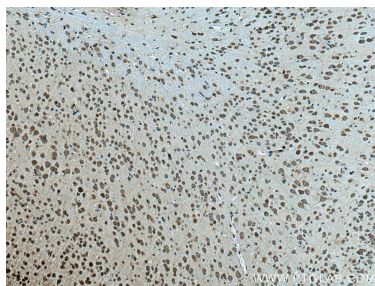
WB result of SLC24A4 antibody (18992-1-AP, 1:1000) with si-Control and si-SLC24A4 transfected HeLa cells.



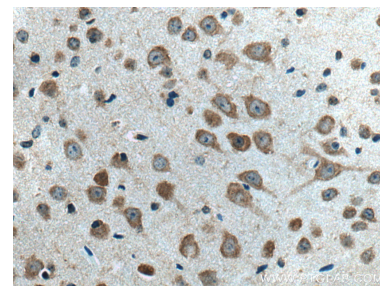
Immunofluorescent analysis of (4% PFA) fixed mouse eye tissue using SLC24A4 antibody (18992-1-AP) at dilution of 1:200 and CoraLite®488-Conjugated Goat Anti-Rabbit IgG(H+L).



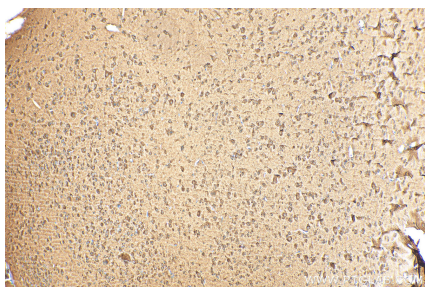
Immunofluorescent analysis of (4% PFA) fixed mouse eye tissue using SLC24A4 antibody (18992-1-AP) at dilution of 1:200 and CoraLite®488-Conjugated Goat Anti-Rabbit IgG(H+L).



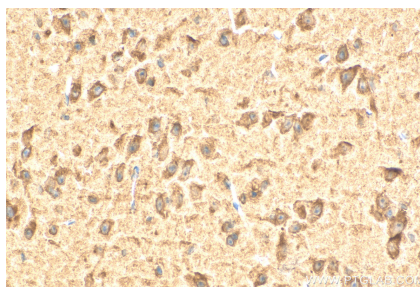
Immunohistochemical analysis of paraffin-embedded mouse brain tissue slide using 18992-1-AP (SLC24A4 antibody) at dilution of 1:200 (under 10x lens). Heat mediated antigen retrieval with Tris-EDTA buffer (pH 9.0).



Immunohistochemical analysis of paraffin-embedded mouse brain tissue slide using 18992-1-AP (SLC24A4 antibody) at dilution of 1:200 (under 40x lens). Heat mediated antigen retrieval with Tris-EDTA buffer (pH 9.0).



Immunohistochemical analysis of paraffin-embedded mouse brain tissue slide using 18992-1-AP (SLC24A4 antibody) at dilution of 1:200 (under 10x lens). Heat mediated antigen retrieval with Tris-EDTA buffer (pH 9.0).



Immunohistochemical analysis of paraffin-embedded mouse brain tissue slide using 18992-1-AP (SLC24A4 antibody) at dilution of 1:200 (under 40x lens). Heat mediated antigen retrieval with Tris-EDTA buffer (pH 9.0).