

# Neprilysin/CD10 Polyclonal antibody

Catalog Number: 18008-1-AP

25 Publications

## Basic Information

## Catalog Number:

18008-1-AP

## Concentration:

600 ug/ml

## Source:

Rabbit

## Isotype:

IgG

## Immunogen Catalog Number:

AG12506

## GenBank Accession Number:

BC106070

## GeneID (NCBI):

4311

## UNIPROT ID:

P08473

## Full Name:

membrane metallo-endoropeptidase

## Calculated MW:

80aa, 9 kDa; 750aa, 85 kDa

## Observed MW:

100 kDa

## Purification Method:

Antigen affinity purification

## Recommended Dilutions:

WB: 1:500-1:2000

IP: 0.5-4.0 ug for 1.0-3.0 mg of total protein lysate

IHC: 1:50-1:500

IF-P: 1:50-1:500

## Applications

## Tested Applications:

WB, IHC, IF-P, IP, ELISA

## Cited Applications:

WB, IHC, IF

## Species Specificity:

human, mouse, rat

## Cited Species:

human, mouse, rat

**Note-IHC: suggested antigen retrieval with TE buffer pH 9.0; (\*) Alternatively, antigen retrieval may be performed with citrate buffer pH 6.0**

## Positive Controls:

**WB**: mouse kidney tissue, human kidney tissue, rat kidney tissue

**IP**: Raji cells,

**IHC**: human kidney tissue, human renal cell carcinoma tissue

**IF-P**: human kidney tissue,

## Background Information

MME is also names as neprilysin, CALLA, NEP, SFE, CD10 and belongs to the peptidase M13 family. It is a glycoprotein that is particularly abundant in kidney, where it is present on the brush border of proximal tubules and on glomerular epithelium. CD10 has been considered a useful marker in the diagnosis of renal carcinomas, because of its expression in clear cell and papillary renal cell carcinomas and its absence in chromophobe renal cell carcinomas (PMID:15286660).

## Notable Publications

Author	Pubmed ID	Journal	Application
Ke-Wei Chang	30217465	Neurochem Int	WB
Jensen José Ricardo JR	24148528	BMC Genomics	IHC
Hui Zeng	32473218	Int J Biol Macromol	WB

## Storage

## Storage:

Store at -20°C. Stable for one year after shipment.

## Storage Buffer:

PBS with 0.02% sodium azide and 50% glycerol, pH7.3

Aliquoting is unnecessary for -20°C storage

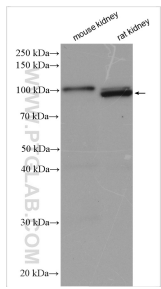
For technical support and original validation data for this product please contact:

T: 4006900926

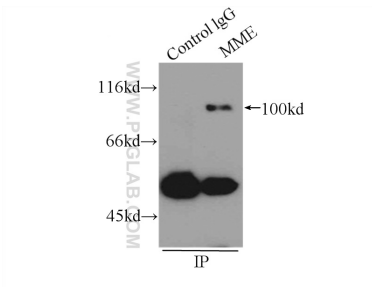
E: [Proteintech-CN@ptglab.com](mailto:Proteintech-CN@ptglab.com)W: [ptgcn.com](http://ptgcn.com)

**This product is exclusively available under Proteintech Group brand and is not available to purchase from any other manufacturer.**

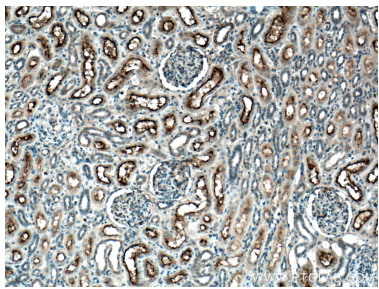
Selected Validation Data



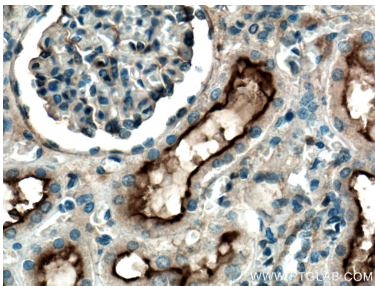
Various lysates were subjected to SDS PAGE followed by western blot with 18008-1-AP (Neprilysin/CD10 antibody) at dilution of 1:1000 incubated at room temperature for 1.5 hours.



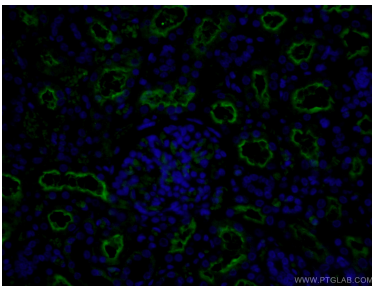
IP result of anti-Neprilysin/CD10 (IP:18008-1-AP, 3ug; Detection:18008-1-AP 1:500) with Raji cells lysate 2400ug.



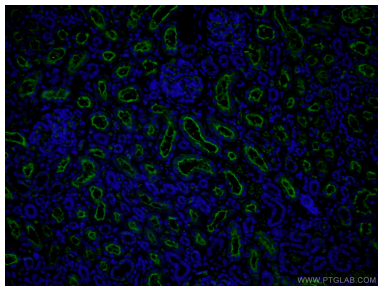
Immunohistochemical analysis of paraffin-embedded human kidney tissue slide using 18008-1-AP (Neprilysin/CD10 antibody) at dilution of 1:200 (under 10x lens. Heat mediated antigen retrieval with Tris-EDTA buffer (pH 9.0).



Immunohistochemical analysis of paraffin-embedded human kidney tissue slide using 18008-1-AP (Neprilysin/CD10 antibody) at dilution of 1:200 (under 40x lens. Heat mediated antigen retrieval with Tris-EDTA buffer (pH 9.0).



Immunofluorescent analysis of (4% PFA) fixed human kidney tissue using 18008-1-AP (Neprilysin/CD10 antibody) at dilution of 1:50 and Alexa Fluor 488-conjugated AffiniPure Goat Anti-Rabbit IgG(H+L).



Immunofluorescent analysis of (4% PFA) fixed human kidney tissue using 18008-1-AP (Neprilysin/CD10 antibody) at dilution of 1:50 and Alexa Fluor 488-conjugated AffiniPure Goat Anti-Rabbit IgG(H+L).