

For Research Use Only

CORO1A Polyclonal antibody

Catalog Number: 17760-1-AP

7 Publications



Basic Information

Catalog Number:

17760-1-AP

Concentration:

450 ug/ml

Source:

Rabbit

Isotype:

IgG

Immunogen Catalog Number:

AG12139

GenBank Accession Number:

BC110374

GeneID (NCBI):

11151

UNIPROT ID:

P31146

Full Name:

coronin, actin binding protein, 1A

Calculated MW:

461 aa, 51 kDa

Observed MW:

57 kDa

Purification Method:

Antigen affinity purification

Recommended Dilutions:

WB: 1:2000-1:10000

IP: 0.5-4.0 ug for 1.0-3.0 mg of total protein lysate

IHC: 1:500-1:2000

IF-P: 1:50-1:500

IF-Fro: 1:50-1:500

FC (Intra): 0.40 ug per 10⁶ cells in a 100 µl suspension

Applications

Tested Applications:

WB, IHC, IF-P, IF-Fro, FC (Intra), IP, ELISA

Cited Applications:

WB, IF, IP

Species Specificity:

human, mouse, rat

Cited Species:

human, mouse, rat

Note-IHC: suggested antigen retrieval with TE buffer pH 9.0; (*) Alternatively, antigen retrieval may be performed with citrate buffer pH 6.0

Positive Controls:

WB: mouse brain tissue, HL-60 cells, Jurkat cells, mouse spleen tissue, rat brain tissue, rat spleen tissue, mouse thymus tissue, rat thymus tissue

IP: mouse brain tissue, mouse spleen tissue

IHC: rat spleen tissue, mouse spleen tissue

IF-P: mouse spleen tissue, mouse colon tissue

IF-Fro: mouse spleen tissue,

FC (Intra): Jurkat cells,

Background Information

CORO1A also known as TACO, belongs to the WD repeat coronin family. CORO1A is recruited to phagosomes and actively retained by surviving mycobacteria and is usually released before phagosome fusion with or maturation into lysosomes. CORO1A is expressed in the brain, thymus, spleen, bone marrow, and lymph nodes. Mutations in CORO1A cause Immunodeficiency 8 with Lymphoproliferation (IMD8)(PMID: 10338208).

Notable Publications

Author	Pubmed ID	Journal	Application
Feng Guo	25302788	PLoS One	WB
Fuli Min	35526384	Int Immunopharmacol	WB
Hui Song	34926519	Front Med (Lausanne)	WB

Storage

Storage:

Store at -20°C. Stable for one year after shipment.

Storage Buffer:

PBS with 0.02% sodium azide and 50% glycerol, pH7.3

Aliquoting is unnecessary for -20°C storage

For technical support and original validation data for this product please contact:

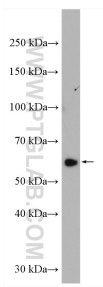
T: 4006900926

E: Proteintech-CN@ptglab.com

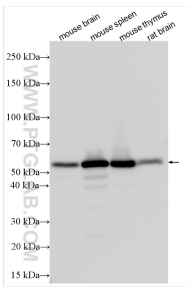
W: ptgcn.com

This product is exclusively available under Proteintech Group brand and is not available to purchase from any other manufacturer.

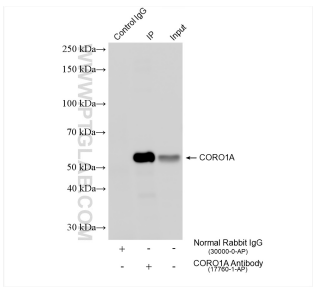
Selected Validation Data



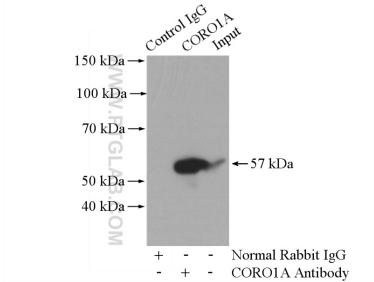
rat brain tissue were subjected to SDS PAGE followed by western blot with 17760-1-AP (CORO1A antibody) at dilution of 1:500 incubated at room temperature for 1.5 hours.



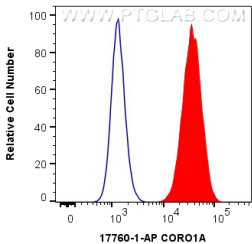
Various lysates were subjected to SDS PAGE followed by western blot with 17760-1-AP (CORO1A antibody) at dilution of 1:5000 incubated at room temperature for 1.5 hours.



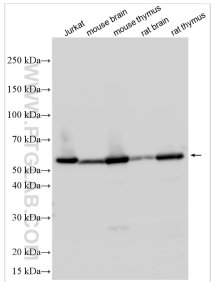
IP result of anti-CORO1A (IP:17760-1-AP, 4ug; Detection:17760-1-AP 1:3000) with mouse brain tissue lysate 1840 ug.



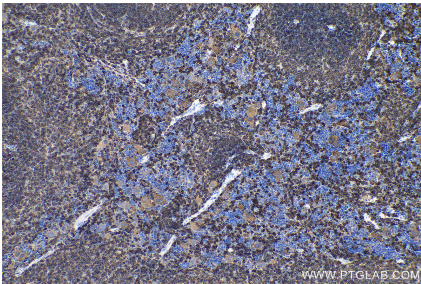
IP result of anti-CORO1A (IP:17760-1-AP, 4ug; Detection:17760-1-AP 1:1000) with mouse spleen tissue lysate 4800ug.



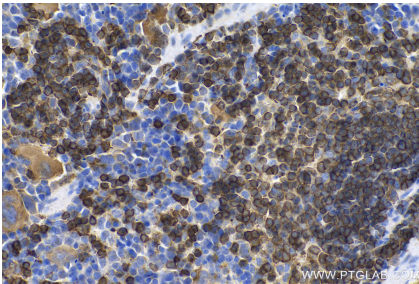
1X10^6 Jurkat cells were intracellularly stained with 0.4 ug Anti-Human CORO1A (17760-1-AP) and CoraLite®488-Conjugated AffiniPure Goat Anti-Rabbit IgG(H+L) at dilution 1:1000 (red), or 0.4 ug Isotype Control. Cells were fixed with 4% PFA and permeabilized with Flow Cytometry Perm Buffer (PF00011-C).



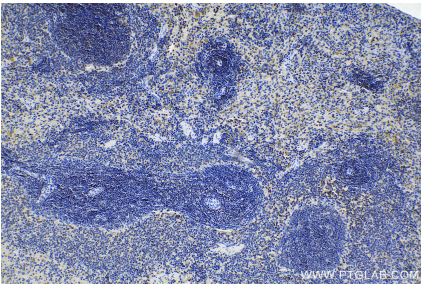
Various lysates were subjected to SDS PAGE followed by western blot with 17760-1-AP (CORO1A antibody) at dilution of 1:8000 incubated at room temperature for 1.5 hours.



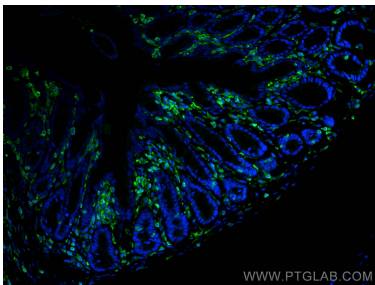
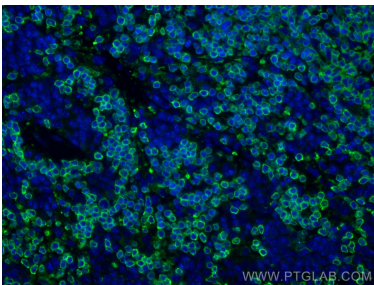
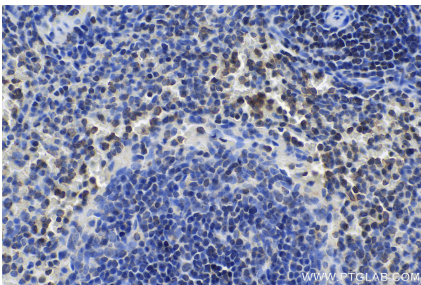
Immunohistochemical analysis of paraffin-embedded mouse spleen tissue slide using 17760-1-AP (CORO1A antibody) at dilution of 1:1000 (under 10x lens). Heat mediated antigen retrieval with Tris-EDTA buffer (pH 9.0).



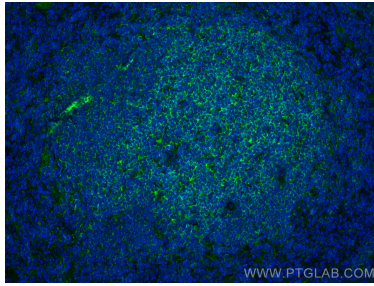
Immunohistochemical analysis of paraffin-embedded mouse spleen tissue slide using 17760-1-AP (CORO1A antibody) at dilution of 1:1000 (under 40x lens). Heat mediated antigen retrieval with Tris-EDTA buffer (pH 9.0).



Immunohistochemical analysis of paraffin-embedded rat spleen tissue slide using 17760-1-AP (CORO1A antibody) at dilution of 1:1000 (under 10x lens). Heat mediated antigen retrieval with Tris-EDTA buffer (pH 9.0).



Immunohistochemical analysis of paraffin-embedded rat spleen tissue slide using 17760-1-AP (CORO1A antibody) at dilution of 1:1000 (under 40x lens). Heat mediated antigen retrieval with Tris-EDTA buffer (pH 9.0).



Immunofluorescent analysis of frozen OCT-embedded mouse spleen tissue using CORO1A antibody (17760-1-AP) at dilution of 1:200 and CoraLite®488-Conjugated AffiniPure Goat Anti-Rabbit IgG(H+L) (SA00013-2).

Immunofluorescent analysis of (4% PFA) fixed mouse spleen tissue using CORO1A antibody (17760-1-AP) at dilution of 1:200 and CoraLite®488-Conjugated AffiniPure Goat Anti-Rabbit IgG(H+L).

Immunofluorescent analysis of (4% PFA) fixed mouse colon tissue using CORO1A antibody (17760-1-AP) at dilution of 1:200 and CoraLite®488-Conjugated AffiniPure Goat Anti-Rabbit IgG(H+L).