

For Research Use Only

Cytokeratin 17-Specific Polyclonal antibody

Catalog Number: 17516-1-AP

Featured Product

28 Publications



Basic Information

Catalog Number:

17516-1-AP

Concentration:

600 ug/ml

Source:

Rabbit

Isotype:

IgG

GenBank Accession Number:

NM_000422

GeneID (NCBI):

3872

UNIPROT ID:

Q04695

Full Name:

keratin 17

Calculated MW:

48 kDa

Observed MW:

48 kDa

Purification Method:

Antigen affinity purification

Recommended Dilutions:

WB: 1:1000-1:20000

IP: 0.5-4.0 ug for 1.0-3.0 mg of total protein lysate

IHC: 1:4000-1:16000

IF/ICC: 1:300-1:1200

Applications

Tested Applications:

WB, IHC, IF/ICC, IP, ELISA

Cited Applications:

WB, IHC, IF, ColP

Species Specificity:

human, mouse, rat

Cited Species:

human, mouse

Note-IHC: suggested antigen retrieval with TE buffer pH 9.0; (*) Alternatively, antigen retrieval may be performed with citrate buffer pH 6.0

Positive Controls:

WB: A431 cells, HeLa cells, HaCaT cells, mouse skin tissue, rat skin tissue

IP: A431 cells,

IHC: human bowen disease, human bowen disease tissue, human cervical cancer tissue, human lung squamous cell carcinoma tissue

IF/ICC: HepG2 cells, HeLa cells

Background Information

Keratins are a large family of proteins that form the intermediate filament cytoskeleton of epithelial cells, which are classified into two major sequence types. Type I keratins are a group of acidic intermediate filament proteins, including K9-K23, and the hair keratins Ha1-Ha8. Type II keratins are the basic or neutral counterparts to the acidic type I keratins, including K1-K8, and the hair keratins, Hb1-Hb6. Keratin 17 is a type I cytokeratin. It is found in nail beds, hair follicles, sebaceous glands, and other epidermal appendages. It is used as a marker for trauma. This antibody is specifically against KRT17.

Notable Publications

Author	Pubmed ID	Journal	Application
Mengjie Li	34845376	Oncogene	WB
Shidi Wu	31790685	Life Sci	WB
Xiaoqiu Zhou	30655849	Oncol Lett	IHC

Storage

Storage:

Store at -20°C. Stable for one year after shipment.

Storage Buffer:

PBS with 0.02% sodium azide and 50% glycerol, pH7.3

Aliquoting is unnecessary for -20°C storage

For technical support and original validation data for this product please contact:

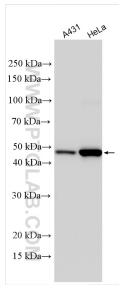
T: 4006900926

E: Proteintech-CN@ptglab.com

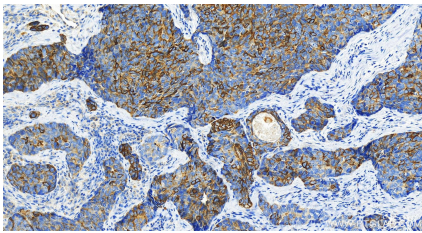
W: ptgcn.com

This product is exclusively available under Proteintech Group brand and is not available to purchase from any other manufacturer.

Selected Validation Data



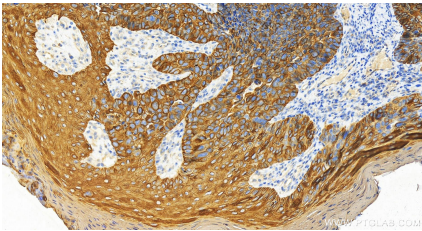
Various lysates were subjected to SDS PAGE followed by western blot with 17516-1-AP (Cytokeratin 17-Specific antibody) at dilution of 1:40000 incubated at room temperature for 1.5 hours.



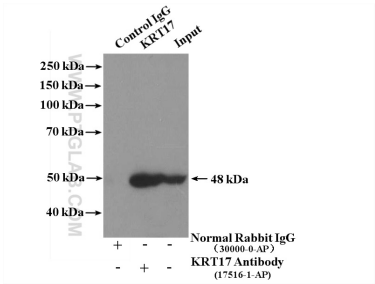
Immunohistochemical analysis of paraffin-embedded human bower disease slide using 17516-1-AP (Cytokeratin 17-Specific antibody) at dilution of 1:8000 (under 20x lens). Heat mediated antigen retrieval with Tris-EDTA buffer (pH 9.0).



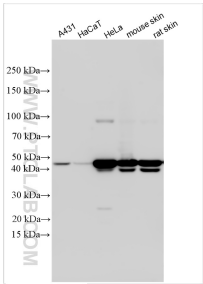
Immunofluorescent analysis of (-20°C Methanol) fixed Hep2 cells using Cytokeratin 17-Specific antibody (17516-1-AP) at dilution of 1:600 and CoraLite®488-Conjugated AffiniPure Goat Anti-Rabbit IgG(H+L).



Immunohistochemical analysis of paraffin-embedded human bower disease slide using 17516-1-AP (Cytokeratin 17-Specific antibody) at dilution of 1:8000 (under 20x lens). Heat mediated antigen retrieval with Tris-EDTA buffer (pH 9.0).



IP result of anti-Cytokeratin 17-Specific (IP:17516-1-AP, 4ug; Detection:17516-1-AP 1:1000) with A431 cells lysate 1200ug.



Various lysates were subjected to SDS PAGE followed by western blot with 17516-1-AP (Cytokeratin 17-Specific antibody) at dilution of 1:50000 incubated at room temperature for 1.5 hours.