

For Research Use Only

ALDH1L1 Polyclonal antibody

Catalog Number: 17390-1-AP

14 Publications



Basic Information

Catalog Number:

17390-1-AP

Concentration:

300 ug/ml

Source:

Rabbit

Isotype:

IgG

Immunogen Catalog Number:

AG11285

GenBank Accession Number:

BC027241

GeneID (NCBI):

10840

UNIPROT ID:

O75891

Full Name:

aldehyde dehydrogenase 1 family, member L1

Calculated MW:

99 kDa

Observed MW:

100 kDa

Purification Method:

Antigen affinity purification

Recommended Dilutions:

WB: 1:2000-1:10000

IP: 0.5-4.0 ug for 1.0-3.0 mg of total protein lysate

IHC: 1:100-1:400

IF-P: 1:50-1:500

IF-Fro: 1:50-1:500

Applications

Tested Applications:

WB, IHC, IF-P, IF-Fro, IP, ELISA

Cited Applications:

WB, IHC, IF

Species Specificity:

human, mouse, rat

Cited Species:

human, mouse, rat

Positive Controls:

WB: mouse liver tissue, mouse liver, rat liver

IP: mouse liver tissue,

IHC: human gliomas tissue, mouse brain tissue

IF-P: mouse brain tissue,

IF-Fro: mouse brain tissue,

Note-IHC: suggested antigen retrieval with TE buffer pH 9.0; (*) Alternatively, antigen retrieval may be performed with citrate buffer pH 6.0

Background Information

Aldehyde dehydrogenase 1 family member L1 (ALDH1L1), belongs to the aldehyde dehydrogenase family of proteins and is responsible for formate oxidation in vivo. Loss of ALDH1L1 is associated with decreased apoptosis, increased cell motility, and cancer progression. ALDH1L1 catalyzes the conversion of 10-formyltetrahydrofolate, nicotinamide adenine dinucleotide phosphate (NADP⁺), and water to tetrahydrofolate, NADPH, and carbon dioxide. ALDH1L1 has some isoforms with MW of 99, 88 and 55 kDa.

Notable Publications

Author	Pubmed ID	Journal	Application
Li Cui	34533844	J Pineal Res	WB
Masayoshi Kano	33298969	NPJ Parkinsons Dis	WB, IHC
Hao Qian	32581380	Nature	IF

Storage

Storage:

Store at -20°C. Stable for one year after shipment.

Storage Buffer:

PBS with 0.02% sodium azide and 50% glycerol, pH7.3

Aliquoting is unnecessary for -20°C storage

For technical support and original validation data for this product please contact:

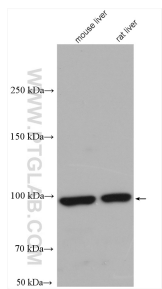
T: 4006900926

E: Proteintech-CN@ptglab.com

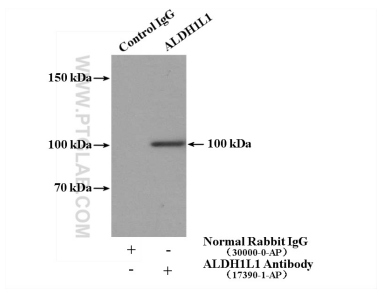
W: ptgcn.com

This product is exclusively available under Proteintech Group brand and is not available to purchase from any other manufacturer.

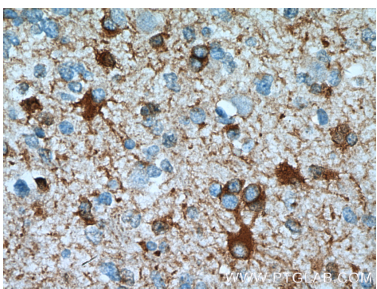
Selected Validation Data



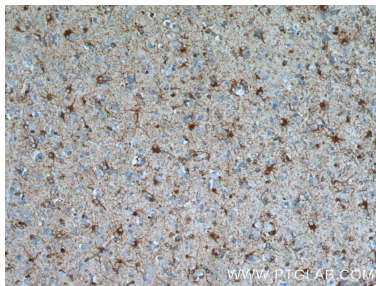
mouse liver tissue were subjected to SDS PAGE followed by western blot with 17390-1-AP (ALDH1L1 antibody) at dilution of 1:5000 incubated at room temperature for 1.5 hours.



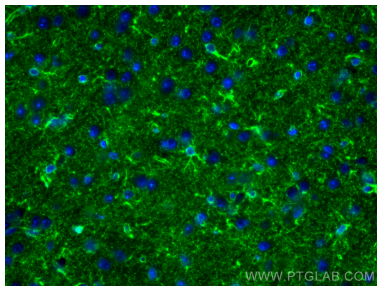
IP result of anti-ALDH1L1 (IP:17390-1-AP, 4ug; Detection:17390-1-AP 1:500) with mouse liver tissue lysate 4000ug.



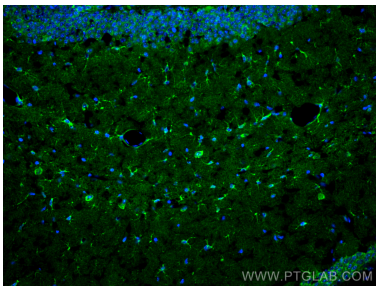
Immunohistochemical analysis of paraffin-embedded human gliomas tissue slide using 17390-1-AP (ALDH1L1 Antibody) at dilution of 1:200 (under 40x lens). Heat mediated antigen retrieval with Tris-EDTA buffer (pH 9.0).



Immunohistochemical analysis of paraffin-embedded human gliomas tissue slide using 17390-1-AP (ALDH1L1 Antibody) at dilution of 1:200 (under 10x lens). Heat mediated antigen retrieval with Tris-EDTA buffer (pH 9.0).



Immunofluorescent analysis of (4% PFA) fixed mouse brain tissue using ALDH1L1 antibody (17390-1-AP) at dilution of 1:200 and CoraLite®488-Conjugated AffiniPure Goat Anti-Rabbit IgG(H+L).



Immunofluorescent analysis of (4% PFA) fixed frozen OCT-embedded mouse brain tissue using ALDH1L1 antibody (17390-1-AP) at dilution of 1:200 and CoraLite®488-Conjugated Goat Anti-Rabbit IgG(H+L) (SA00013-2).