

MYL7 Polyclonal antibody

Catalog Number: 17283-1-AP

17 Publications

Basic Information

Catalog Number:

17283-1-AP

Concentration:

650 ug/ml

Source:

Rabbit

Isotype:

IgG

Immunogen Catalog Number:

AG11058

GenBank Accession Number:

BC027915

GeneID (NCBI):

58498

UNIPROT ID:

Q01449

Full Name:

myosin, light chain 7, regulatory

Calculated MW:

175 aa, 19 kDa

Observed MW:

19 kDa

Purification Method:

Antigen affinity purification

Recommended Dilutions:

WB: 1:1000-1:4000

IP: 0.5-4.0 ug for 1.0-3.0 mg of total protein lysate

IHC: 1:50-1:500

IF-P: 1:50-1:500

FC (Intra): 0.50 ug per 10⁶ cells in a 100 µl suspension

Applications

Tested Applications:

WB, IHC, IF-P, FC (Intra), IP, ELISA

Cited Applications:

WB, IHC, IF, ColP

Species Specificity:

human, mouse, rat

Cited Species:

human, mouse, rat

Note-IHC: suggested antigen retrieval with TE buffer pH 9.0; (*) Alternatively, antigen retrieval may be performed with citrate buffer pH 6.0

Positive Controls:

WB: mouse heart tissue, mouse skeletal muscle tissue, rat skeletal muscle tissue

IP: mouse heart tissue,

IHC: mouse heart tissue, human heart tissue

IF-P: mouse heart tissue,

FC (Intra): C2C12 cells,

Background Information

MYL7, also known as myosin light chain 2a (MLC2a), is essential for heart development. The expression of MYL7 in heart is predominantly restricted to the atrium. So its expression has been considered as useful marker for atrial cardiomyocytes.

Notable Publications

Author	Pubmed ID	Journal	Application
Yuanbiao Zhao	26354680	Nat Commun	IF
Farhad Khosravi	35453733	Biology (Basel)	WB
Xiangyu Zhang	35246800	Stem Cell Rev Rep	IF

Storage

Storage:

Store at -20°C. Stable for one year after shipment.

Storage Buffer:

PBS with 0.02% sodium azide and 50% glycerol, pH7.3

Aliquoting is unnecessary for -20°C storage

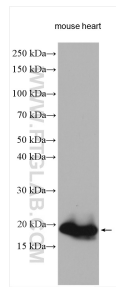
For technical support and original validation data for this product please contact:

T: 4006900926

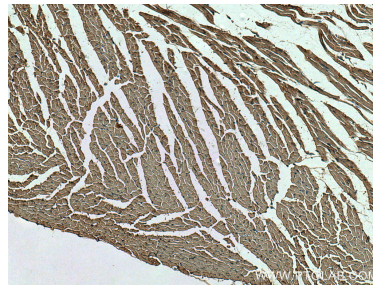
E: Proteintech-CN@ptglab.comW: ptgcn.com

This product is exclusively available under Proteintech Group brand and is not available to purchase from any other manufacturer.

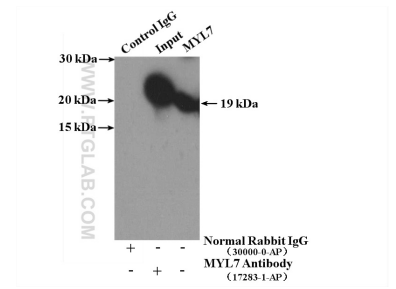
Selected Validation Data



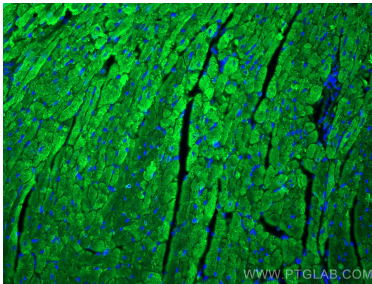
Mouse heart lysates were subjected to SDS PAGE followed by western blot with 17283-1-AP (MYL7 antibody) at dilution of 1:2000 incubated at room temperature for 1.5 hours.



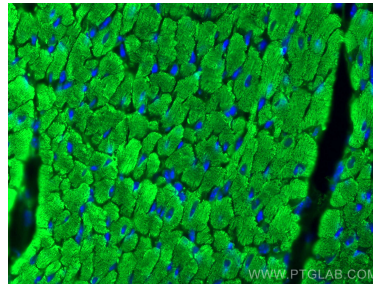
Immunohistochemical analysis of paraffin-embedded mouse heart tissue slide using 17283-1-AP (MYL7 antibody) at dilution of 1:200 (under 10x lens). Heat mediated antigen retrieval with Tris-EDTA buffer (pH 9.0).



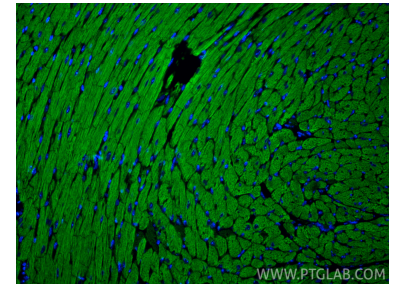
IP result of anti-MYL7 (IP:17283-1-AP, 4ug; Detection:17283-1-AP 1:700) with mouse heart tissue lysate 4000ug.



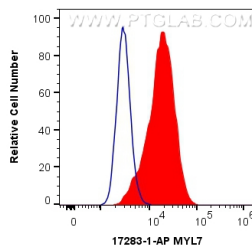
Immunofluorescent analysis of (4% PFA) fixed mouse heart tissue using MYL7 antibody (17283-1-AP) at dilution of 1:200 and CoraLite@488-Conjugated AffiniPure Goat Anti-Rabbit IgG(H+L).



Immunofluorescent analysis of (4% PFA) fixed mouse heart tissue using MYL7 antibody (17283-1-AP) at dilution of 1:200 and CoraLite@488-Conjugated AffiniPure Goat Anti-Rabbit IgG(H+L).



Immunofluorescent analysis of (4% PFA) fixed paraffin-embedded mouse heart tissue using MYL7 antibody (17283-1-AP) at dilution of 1:200 and CoraLite@488-Conjugated Goat Anti-Rabbit IgG(H+L) (SA00013-2). Heat mediated antigen retrieval with Tris-EDTA buffer (pH 9.0).



1X10⁶ C2C12 cells were intracellularly stained with 0.5 ug Anti-Human MYL7 (17283-1-AP) and CoraLite@488-Conjugated AffiniPure Goat Anti-Rabbit IgG(H+L) at dilution 1:1000 (red), or 0.5 ug Control Antibody. Cells were fixed with 4% PFA and permeabilized with Flow Cytometry Perm Buffer (PF00011-C).