

For Research Use Only

MT1M Polyclonal antibody

Catalog Number: 17281-1-AP

6 Publications



Basic Information

Catalog Number:

17281-1-AP

Concentration:

850 µg/ml

Source:

Rabbit

Isotype:

IgG

Immunogen Catalog Number:

AG11048

GenBank Accession Number:

BC028280

GeneID (NCBI):

4499

UNIPROT ID:

Q8N339

Full Name:

metallothionein 1M

Calculated MW:

61 aa, 6 kDa

Purification Method:

Antigen affinity purification

Recommended Dilutions:

IHC: 1:50-1:500

Applications

Tested Applications:

IHC, ELISA

Cited Applications:

WB, IF

Species Specificity:

human

Cited Species:

human, mouse

Note-IHC: suggested antigen retrieval with TE buffer pH 9.0; (*) Alternatively, antigen retrieval may be performed with citrate buffer pH 6.0

Positive Controls:

IHC : human kidney tissue,

Background Information

Notable Publications

Author	Pubmed ID	Journal	Application
Jianqiang Zhu	35533959	Environ Pollut	WB,IF
Rhiannon V McNeill	30884885	Int J Mol Sci	WB
Wenjing Xiao	35253629	Autophagy	WB

Storage

Storage:

Store at -20°C. Stable for one year after shipment.

Storage Buffer:

PBS with 0.02% sodium azide and 50% glycerol, pH7.3

Aliquoting is unnecessary for -20°C storage

For technical support and original validation data for this product please contact:

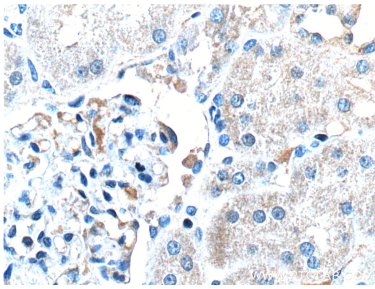
T: 4006900926

E: Proteintech-CN@ptglab.com

W: ptgcn.com

This product is exclusively available under Proteintech Group brand and is not available to purchase from any other manufacturer.

Selected Validation Data



Immunohistochemical analysis of paraffin-embedded human kidney tissue slide using 17281-1-AP (MT1M Antibody) at dilution of 1:50 (under 40x lens).