

For Research Use Only

# RNASEH2C Polyclonal antibody

Catalog Number: 16518-1-AP

Featured Product

5 Publications



## Basic Information

Catalog Number:

16518-1-AP

Concentration:

450 µg/ml

Source:

Rabbit

Isotype:

IgG

Immunogen Catalog Number:

AG9739

GenBank Accession Number:

BC023588

GeneID (NCBI):

84153

UNIPROT ID:

Q8TDP1

Full Name:

ribonuclease H2, subunit C

Calculated MW:

164 aa, 18 kDa

Observed MW:

22 kDa

Purification Method:

Antigen affinity purification

Recommended Dilutions:

WB: 1:500-1:2000

IP: 0.5-4.0 µg for 1.0-3.0 mg of total protein lysate

IHC: 1:20-1:200

## Applications

Tested Applications:

WB, IP, IHC, ELISA

Cited Applications:

WB

Species Specificity:

human

Cited Species:

human

**Note-IHC: suggested antigen retrieval with TE buffer pH 9.0; (\*) Alternatively, antigen retrieval may be performed with citrate buffer pH 6.0**

Positive Controls:

**WB** : A549 cells, HEK-293 cells, human spleen tissue, human testis tissue, HeLa cells, Jurkat cells

**IP** : HEK-293 cells,

**IHC** : human brain tissue, human lung tissue, human skin tissue, human spleen tissue

## Background Information

### Notable Publications

| Author                | Pubmed ID | Journal       | Application |
|-----------------------|-----------|---------------|-------------|
| Sara Pizzi            | 25274781  | Hum Mol Genet | WB          |
| Laura A Lindsey-Boltz | 26491008  | J Biol Chem   | WB          |
| Michal Zimmermann     | 29973717  | Nature        | WB          |

## Storage

Storage:

Store at -20°C. Stable for one year after shipment.

Storage Buffer:

PBS with 0.02% sodium azide and 50% glycerol, pH7.3

Aliquoting is unnecessary for -20°C storage

For technical support and original validation data for this product please contact:

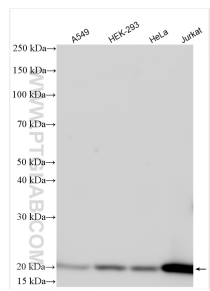
T: 4006900926

E: [Proteintech-CN@ptglab.com](mailto:Proteintech-CN@ptglab.com)

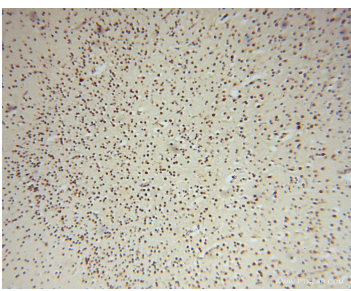
W: [ptgcn.com](http://ptgcn.com)

This product is exclusively available under Proteintech Group brand and is not available to purchase from any other manufacturer.

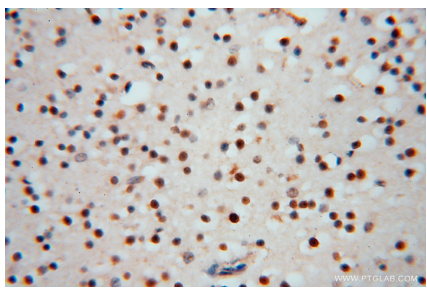
Selected Validation Data



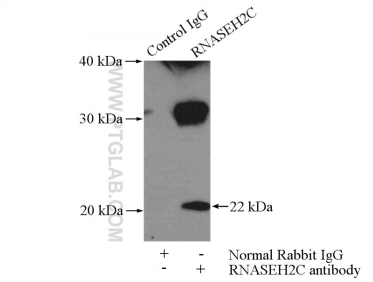
Various lysates were subjected to SDS PAGE followed by western blot with 16518-1-AP (RNASEH2C antibody) at dilution of 1:1000 incubated at room temperature for 1.5 hours.



Immunohistochemical analysis of paraffin-embedded human brain using 16518-1-AP (RNASEH2C antibody) at dilution of 1:50 (under 10x lens).



Immunohistochemical analysis of paraffin-embedded human brain using 16518-1-AP (RNASEH2C antibody) at dilution of 1:50 (under 40x lens).



IP result of anti-RNASEH2C (IP:16518-1-AP, 3ug; Detection:16518-1-AP 1:500) with HEK-293 cells lysate 3200ug.