

HTF9C Polyclonal antibody

Catalog Number: 16199-1-AP

Featured Product

1 Publications

Basic Information

Catalog Number:

16199-1-AP

Size:

800 µg/ml

Source:

Rabbit

Isotype:

IgG

Immunogen Catalog Number:

AG9112

GenBank Accession Number:

BC013352

GeneID (NCBI):

27037

UNIPROT ID:

Q8IZ69

Full Name:

TRM2 tRNA methyltransferase 2 homolog A (S. cerevisiae)

Calculated MW:

625 aa, 69 kDa

Observed MW:

42-44 kDa, 68-75 kDa

Purification Method:

Antigen affinity purification

Recommended Dilutions:

WB 1:500-1:1000

IHC 1:20-1:200

Applications

Tested Applications:

IHC, WB, ELISA

Cited Applications:

WB

Species Specificity:

human, mouse, rat

Cited Species:

human

Note-IHC: suggested antigen retrieval with TE buffer pH 9.0; (*) Alternatively, antigen retrieval may be performed with citrate buffer pH 6.0

Positive Controls:

WB : MCF-7 cells, HepG2 cells, mouse liver tissue

IHC : human kidney tissue, human breast cancer tissue

Background Information

tRNA methyltransferase 2 homolog A (TRMT2A), also known as HTF9C is a novel cell cycle regulated protein, as associated with aggressive clinical course. HTF9C harbors a putative RNA recognition motif (RRM) in the N-terminus and the conserved uracil-C5-methyltransferase domain of the TrmA family in the C-terminus. HTF9C antibody can detect two bands about 68 kDa and 40 kDa (PMID: 20307320).

Notable Publications

Author	Pubmed ID	Journal	Application
Wei Dai	34556860	Nat Chem Biol	WB

Storage

Storage:

Store at -20°C. Stable for one year after shipment.

Storage Buffer:

PBS with 0.02% sodium azide and 50% glycerol pH 7.3.

Aliquoting is unnecessary for -20°C storage

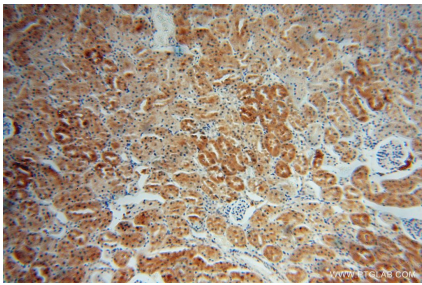
For technical support and original validation data for this product please contact:

T: 4006900926

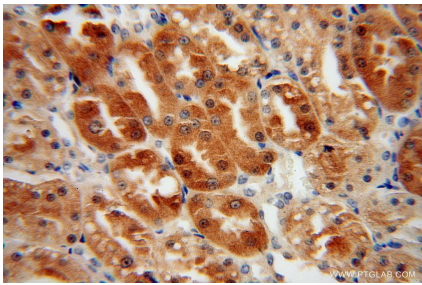
E: Proteintech-CN@ptglab.comW: ptgcn.com

This product is exclusively available under Proteintech Group brand and is not available to purchase from any other manufacturer.

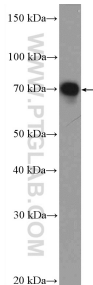
Selected Validation Data



Immunohistochemical analysis of paraffin-embedded human kidney using 16199-1-AP (HTF9C antibody) at dilution of 1:50 (under 10x lens).



Immunohistochemical analysis of paraffin-embedded human kidney using 16199-1-AP (HTF9C antibody) at dilution of 1:50 (under 40x lens).



MCF-7 cells were subjected to SDS PAGE followed by western blot with 16199-1-AP (HTF9C antibody at dilution of 1:600 incubated at room temperature for 1.5 hours.