

For Research Use Only

# KRAS-4B-specific Polyclonal antibody

Catalog Number: 16155-1-AP

Featured Product

6 Publications



## Basic Information

Catalog Number:

16155-1-AP

Concentration:

850 ug/ml

Source:

Rabbit

Isotype:

IgG

GenBank Accession Number:

NM\_004985

GeneID (NCBI):

3845

UNIPROT ID:

P01116

Full Name:

v-Ki-ras2 Kirsten rat sarcoma viral oncogene homolog

Calculated MW:

21 kDa

Observed MW:

21 kDa

Purification Method:

Antigen affinity purification

Recommended Dilutions:

WB: 1:500-1:2000

IHC: 1:200-1:800

IF/ICC: 1:50-1:500

## Applications

Tested Applications:

WB, IHC, IF/ICC, ELISA

Cited Applications:

WB

Species Specificity:

human, mouse, rat

Cited Species:

human

**Note-IHC: suggested antigen retrieval with TE buffer pH 9.0; (\*) Alternatively, antigen retrieval may be performed with citrate buffer pH 6.0**

Positive Controls:

WB : HeLa cells, HEK-293 cells, MCF-7 cells, mouse brain tissue, Recombinant protein

IHC : rat brain tissue, human colon cancer tissue

IF/ICC : HeLa cells,

## Background Information

RAS gene family encodes very similar 21KD proteins and are homologs of rodent sarcoma virus genes that have transforming abilities. KRAS has two isoforms, 4A and 4B. This antibody is specific for KRAS-4B, which is also named as KRAS-2B.

## Notable Publications

Author	Pubmed ID	Journal	Application
Andrew M Waters	28951536	Sci Signal	WB
Mahmoud Labib	32719513	Nat Biomed Eng	
Sascha Röth	32668202	Cell Chem Biol	WB

## Storage

Storage:

Store at -20°C. Stable for one year after shipment.

Storage Buffer:

PBS with 0.02% sodium azide and 50% glycerol, pH7.3

Aliquoting is unnecessary for -20°C storage

For technical support and original validation data for this product please contact:

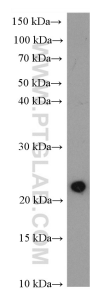
T: 4006900926

E: [Proteintech-CN@ptglab.com](mailto:Proteintech-CN@ptglab.com)

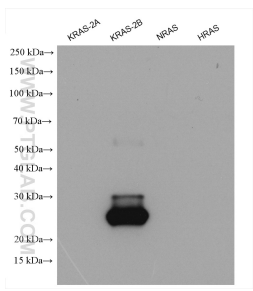
W: [ptgcn.com](http://ptgcn.com)

**This product is exclusively available under Proteintech Group brand and is not available to purchase from any other manufacturer.**

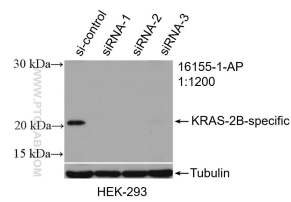
Selected Validation Data



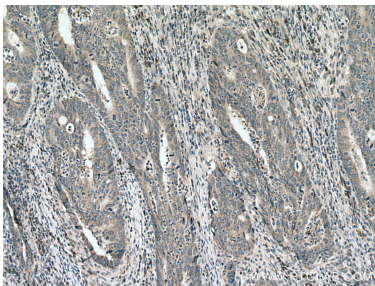
HeLa cells were subjected to SDS PAGE followed by western blot with 16155-1-AP (KRAS-2B-specific antibody) at dilution of 1:1000 incubated at room temperature for 1.5 hours.



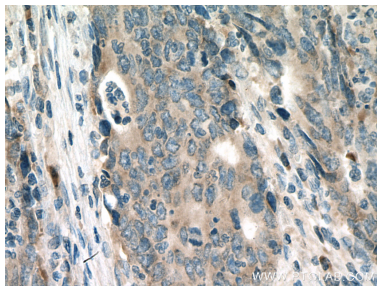
Recombinant proteins(ag27444 (6<sup>\*</sup>His tag-KRAS-2A), ag21645(6<sup>\*</sup>His tag-KRAS-2B), ag29746(6<sup>\*</sup>His tag-NRAS), ag23265(GST-HRAS))were subjected to SDS PAGE followed by western blot with 16155-1-AP (KRAS-2B-specific antibody) at dilution of 1:2000 incubated at room temperature for 1.5 hours.



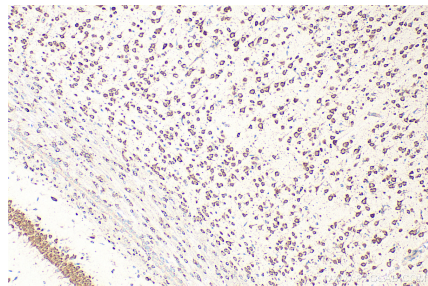
HEK-293 cells were subjected to SDS PAGE followed by western blot with 16155-1-AP (KRAS-2B-specific antibody) at dilution of 1:1200 incubated at room temperature for 1.5 hours.



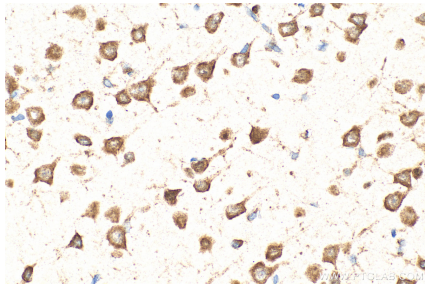
Immunohistochemical analysis of paraffin-embedded human colon cancer tissue slide using 16155-1-AP (KRAS-2B-specific antibody) at dilution of 1:200 (under 10x lens). Heat mediated antigen retrieval with Tris-EDTA buffer (pH 9.0).



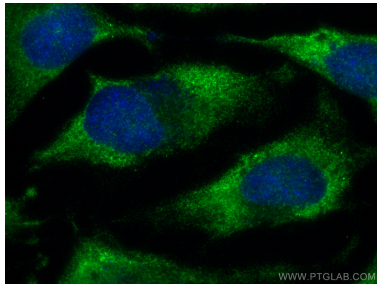
Immunohistochemical analysis of paraffin-embedded human colon cancer tissue slide using 16155-1-AP (KRAS-2B-specific antibody) at dilution of 1:200 (under 40x lens). Heat mediated antigen retrieval with Tris-EDTA buffer (pH 9.0).



Immunohistochemical analysis of paraffin-embedded rat brain tissue slide using 16155-1-AP (KRAS-4B-specific antibody) at dilution of 1:400 (under 10x lens). Heat mediated antigen retrieval with Tris-EDTA buffer (pH 9.0).



Immunohistochemical analysis of paraffin-embedded rat brain tissue slide using 16155-1-AP (KRAS-4B-specific antibody) at dilution of 1:400 (under 40x lens). Heat mediated antigen retrieval with Tris-EDTA buffer (pH 9.0).



Immunofluorescent analysis of (-20°C Ethanol) fixed HeLa cells using KRAS-2B-specific antibody (16155-1-AP) at dilution of 1:200 and Multi-rAb CoraLite ® Plus 488-Goat Anti-Rabbit Recombinant Secondary Antibody (H+L) (RGAR002).