

For Research Use Only

# HSP60 Polyclonal antibody

Catalog Number: 15282-1-AP

Featured Product

162 Publications



## Basic Information

### Catalog Number:

15282-1-AP

### Concentration:

1000 µg/ml

### Source:

Rabbit

### Isotype:

IgG

### Immunogen Catalog Number:

AG7401

### GenBank Accession Number:

BC003030

### GeneID (NCBI):

3329

### UNIPROT ID:

P10809

### Full Name:

heat shock 60kDa protein 1  
(chaperonin)

### Calculated MW:

61 kDa

### Observed MW:

60 kDa

### Purification Method:

Antigen affinity purification

### Recommended Dilutions:

WB: 1:2000-1:16000

IP: 0.5-4.0 µg for 1.0-3.0 mg of total  
protein lysate

IHC: 1:50-1:500

IF/ICC: 1:50-1:500

FC (Intra): 0.40 µg per 10<sup>6</sup> cells in a  
100 µl suspension

## Applications

### Tested Applications:

WB, IHC, IF/ICC, FC (Intra), IP, ELISA

### Cited Applications:

WB, IHC, IF, IP, CoIP, ELISA

### Species Specificity:

human, mouse, rat

### Cited Species:

human, mouse, rat, pig, chicken, zebrafish, goat, yeast,  
fish, duck

**Note-IHC: suggested antigen retrieval with  
TE buffer pH 9.0; (\*) Alternatively, antigen  
retrieval may be performed with citrate  
buffer pH 6.0**

### Positive Controls:

WB: HEK-293 cells, HepG2 cells, NIH/3T3 cells, HeLa,  
mouse heart, rat heart

IP: HEK-293 cells,

IHC: human lung cancer tissue,

IF/ICC: HeLa cells,

FC (Intra): HepG2 cells,

## Background Information

HSPD1, also known as HSP60, belongs to the chaperonin family and acts as a chaperone to enhance cell survival under physiological stresses. Hsp60 has been shown to be connected with many aspects of cell functions such as protein folding and assembling of polypeptide chains in mitochondria. Recently it has been reported that HSP60 is associated with apoptosis or inhibition of cancer cell growth. (21822415)

## Notable Publications

Author	Pubmed ID	Journal	Application
Beiwu Lan	36116558	Exp Cell Res	WB
Jianli Tang	36106732	mBio	WB,IF,IP
Panayotis Pachnis	36044570	Sci Adv	WB

## Storage

### Storage:

Store at -20°C. Stable for one year after shipment.

### Storage Buffer:

PBS with 0.02% sodium azide and 50% glycerol, pH7.3

Aliquoting is unnecessary for -20°C storage

For technical support and original validation data for this product please contact:

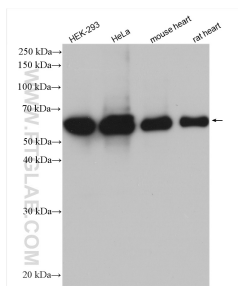
T: 4006900926

E: [Proteintech-CN@ptglab.com](mailto:Proteintech-CN@ptglab.com)

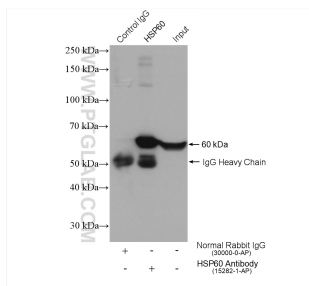
W: [ptgcn.com](http://ptgcn.com)

**This product is exclusively available under Proteintech Group brand and is not available to purchase from any other manufacturer.**

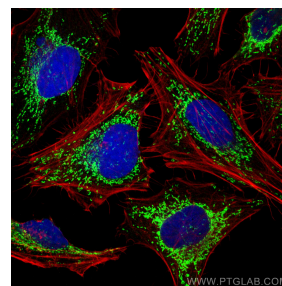
## Selected Validation Data



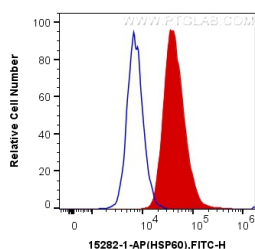
Various lysates were subjected to SDS PAGE followed by western blot with 15282-1-AP (HSP60 antibody) at dilution of 1:8000 incubated at room temperature for 1.5 hours.



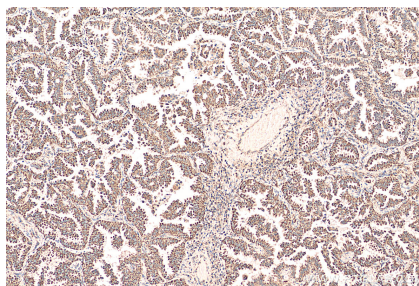
IP result of anti-HSP60 (IP:15282-1-AP, 4ug; Detection:15282-1-AP 1:10000) with HEK-293 cells lysate 1800 ug.



Immunofluorescent analysis of (4% PFA) fixed HeLa cells using HSP60 antibody (15282-1-AP) at dilution of 1:200 and CoraLite®488-Conjugated Goat Anti-Rabbit IgG(H+L), (CL594-Phalloidin, red).



1X10<sup>6</sup> HepG2 cells were intracellularly stained with 0.4 ug Anti-Human HSP60 (15282-1-AP) and CoraLite®488-Conjugated Goat Anti-Rabbit IgG(H+L) at dilution 1:1000 (red), or 0.4 ug x. Cells were fixed with 4% PFA and permeabilized with Intracellular Staining Permeabilization Wash Buffer.



Immunohistochemical analysis of paraffin-embedded human lung cancer tissue slide using 15282-1-AP (HSP60 antibody) at dilution of 1:200 (under 10x lens). Heat mediated antigen retrieval with Tris-EDTA buffer (pH 9.0).