

For Research Use Only

# SLC25A1 Polyclonal antibody

Catalog Number: 15235-1-AP

Featured Product

35 Publications



## Basic Information

Catalog Number:

15235-1-AP

Concentration:

600 ug/ml

Source:

Rabbit

Isotype:

IgG

Immunogen Catalog Number:

AG7352

GenBank Accession Number:

BC004980

GeneID (NCBI):

6576

UNIPROT ID:

P53007

Full Name:

solute carrier family 25  
(mitochondrial carrier; citrate  
transporter), member 1

Calculated MW:

34 kDa

Observed MW:

30-34 kDa

Purification Method:

Antigen affinity purification

Recommended Dilutions:

WB: 1:1000-1:4000

IP: 0.5-4.0 ug for 1.0-3.0 mg of total  
protein lysate

IHC: 1:50-1:500

IF/ICC: 1:50-1:500

## Applications

Tested Applications:

WB, IHC, IF/ICC, IP, ELISA

Cited Applications:

WB, IHC, IF, IP

Species Specificity:

human, mouse, rat

Cited Species:

human, mouse

Positive Controls:

WB: HeLa cells, HepG2 cells, NCI-H1299 cells

IP: HeLa cells,

IHC: human breast cancer tissue, human lung cancer  
tissue, human kidney tissue

IF/ICC: HeLa cells, HepG2 cells

**Note-IHC: suggested antigen retrieval with  
TE buffer pH 9.0; (\*) Alternatively, antigen  
retrieval may be performed with citrate  
buffer pH 6.0**

## Background Information

SLC25A1, also known as CIC or CTP, is a mitochondrial citrate transporter that exports citrate from the mitochondria to the cytosol. SLC25A1 is highly expressed in several tumor types. Recently it has been identified as a novel transcriptional target of mutant p53 and a negative tumor prognostic marker. In addition, defects in SLC25A1 has been found as a cause of combined D-2- and L-2-hydroxyglutaric aciduria. This antibody specifically recognized the endogenous SLC25A1; no protein was detected in cells from subjects containing two alleles with truncating mutations with this antibody. (24681808, 23561848)

## Notable Publications

Author	Pubmed ID	Journal	Application
Andromachi Pouikli	36278281	EMBO J	WB
Ying Yang	34839347	Cell Death Dis	WB, IHC
Weiwei Liu	35585086	Nat Commun	WB, IP

## Storage

Storage:

Store at -20°C. Stable for one year after shipment.

Storage Buffer:

PBS with 0.02% sodium azide and 50% glycerol, pH7.3

Aliquoting is unnecessary for -20°C storage

For technical support and original validation data for this product please contact:

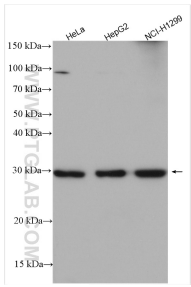
T: 4006900926

E: [Proteintech-CN@ptglab.com](mailto:Proteintech-CN@ptglab.com)

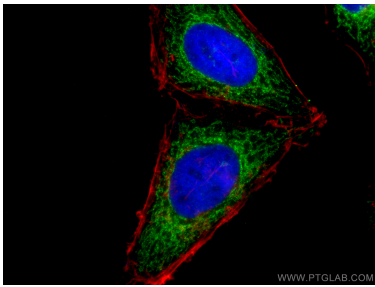
W: [ptgcn.com](http://ptgcn.com)

**This product is exclusively available under Proteintech Group brand and is not available to purchase from any other manufacturer.**

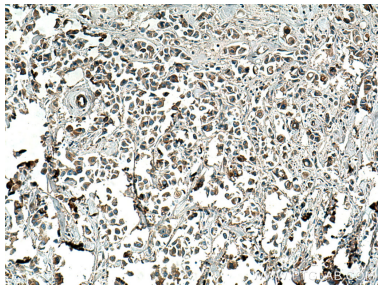
Selected Validation Data



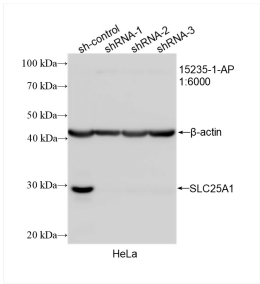
Various lysates were subjected to SDS PAGE followed by western blot with 15235-1-AP (SLC25A1 antibody) at dilution of 1:2000 incubated at room temperature for 1.5 hours.



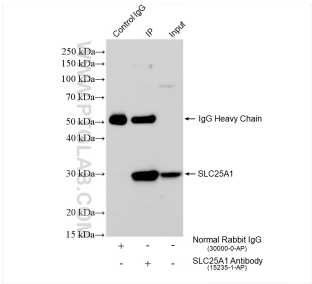
Immunofluorescent analysis of (4% PFA) fixed HeLa cells using 15235-1-AP (SLC25A1 antibody), at dilution of 1:200 and Coralite®488-Conjugated AffiniPure Goat Anti-Rabbit IgG(H+L).



Immunohistochemical analysis of paraffin-embedded human breast cancer tissue slide using 15235-1-AP (SLC25A1 antibody) at dilution of 1:200 (under 10x lens). Heat mediated antigen retrieval with Tris-EDTA buffer (pH 9.0).



WB result of SLC25A1 antibody (15235-1-AP; 1:6000; incubated at room temperature for 1.5 hours) with sh-Control and sh-SLC25A1 transfected HeLa cells.



IP result of anti-SLC25A1 (IP:15235-1-AP, 4ug; Detection:15235-1-AP 1:5000) with HeLa cells lysate 1400 ug.