

For Research Use Only

OGDH Polyclonal antibody

Catalog Number: 15212-1-AP

Featured Product

76 Publications



Basic Information

Catalog Number:

15212-1-AP

Concentration:

400 ug/ml

Source:

Rabbit

Isotype:

IgG

Immunogen Catalog Number:

AG7368

GenBank Accession Number:

BC004964

GeneID (NCBI):

4967

UNIPROT ID:

Q02218

Full Name:

oxoglutarate (alpha-ketoglutarate)
dehydrogenase (lipoamide)

Calculated MW:

116 kDa

Observed MW:

116 kDa

Purification Method:

Antigen affinity purification

Recommended Dilutions:

WB: 1:5000-1:10000

IHC: 1:50-1:500

IF/ICC: 1:50-1:500

Applications

Tested Applications:

WB, IHC, IF/ICC, ELISA

Cited Applications:

WB, IHC, IF, IP, CoIP

Species Specificity:

human, mouse, rat

Cited Species:

human, mouse, rat, rabbit, chicken, sheep

**Note-IHC: suggested antigen retrieval with
TE buffer pH 9.0; (*) Alternatively, antigen
retrieval may be performed with citrate
buffer pH 6.0**

Positive Controls:

WB: mouse heart tissue, A549 cells, HeLa cells, mouse
liver tissue, mouse pancreas tissue, ROS1728 cells, rat
heart tissue, mouse lung tissue

IHC: human lung cancer tissue,

IF/ICC: A549 cells, HeLa cells

Background Information

OGDH(2-oxoglutarate dehydrogenase, mitochondrial) is also named as OGDC-E1 and belongs to the alpha-ketoglutarate dehydrogenase family. It is one of the three enzymatic components of 2-oxoglutarate dehydrogenase complex, which catalyzes the overall conversion of 2-oxoglutarate to succinyl-CoA and CO₂. This protein has 3 isoforms produced by alternative splicing. This antibody is immunized with the C-terminal and can recognize the isoform 1 and 2 with the MW of 116 kDa.

Notable Publications

| Author | Pubmed ID | Journal | Application |
|----------------|-----------|-----------------|-------------|
| Mengyuan Li | 34558014 | Viol Sin | WB |
| Teresa W-M Fan | 36150727 | J Immunol | |
| Lifang Li | 36230229 | Animals (Basel) | WB |

Storage

Storage:

Store at -20°C. Stable for one year after shipment.

Storage Buffer:

PBS with 0.02% sodium azide and 50% glycerol, pH7.3

Aliquoting is unnecessary for -20°C storage

For technical support and original validation data for this product please contact:

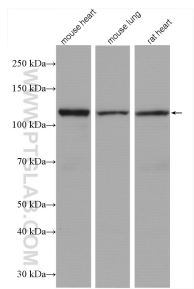
T: 4006900926

E: Proteintech-CN@ptglab.com

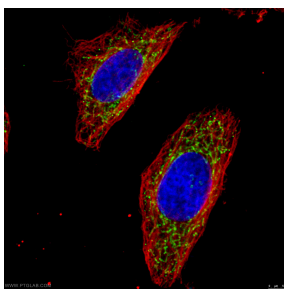
W: ptgcn.com

This product is exclusively available under Proteintech Group brand and is not available to purchase from any other manufacturer.

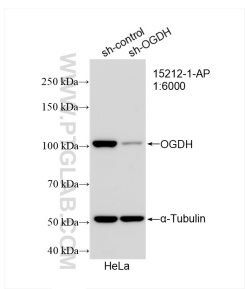
Selected Validation Data



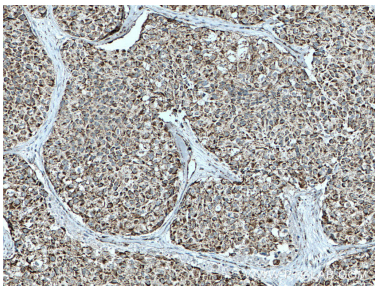
Various lysates were subjected to SDS PAGE followed by western blot with 15212-1-AP (OGDH antibody) at dilution of 1:8000 incubated at room temperature for 1.5 hours.



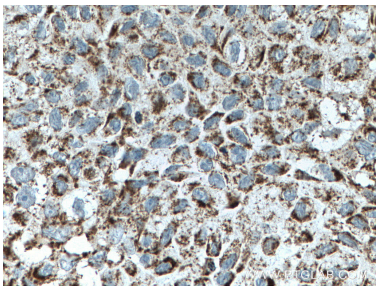
Immunofluorescent analysis of (4% PFA) fixed HeLa cells stained for OGDH rabbit pAb (15212-1-AP) at dilution of 1:50 and alpha Tubulin mouse mAb (66031-1-Ig) at dilution of 1:100, further stained with Alexa Fluor 488-conjugated AffiniPure Goat Anti-Rabbit IgG(H+L) for 15212-1-AP, and Alexa Fluor 594-conjugated AffiniPure Goat Anti-mouse IgG (H+L) for 66031-1-Ig. .



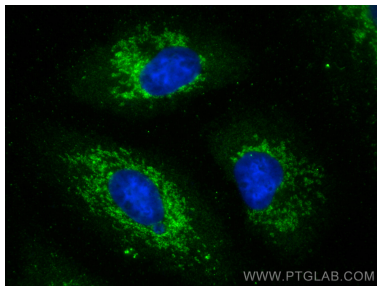
WB result of OGDH antibody (15212-1-AP; 1:6000; incubated at room temperature for 1.5 hours) with sh-Control and sh-OGDH transfected HeLa cells.



Immunohistochemical analysis of paraffin-embedded human lung cancer tissue slide using 15212-1-AP (OGDH antibody) at dilution of 1:200 (under 10x lens. Heat mediated antigen retrieval with Tris-EDTA buffer (pH 9.0).



Immunohistochemical analysis of paraffin-embedded human lung cancer tissue slide using 15212-1-AP (OGDH antibody) at dilution of 1:200 (under 40x lens. Heat mediated antigen retrieval with Tris-EDTA buffer (pH 9.0).



Immunofluorescent analysis of (-20°C Methanol) fixed A549 cells using OGDH antibody (15212-1-AP) at dilution of 1:200 and CoraLite®488-Conjugated AffiniPure Goat Anti-Rabbit IgG(H+L).