

For Research Use Only

# GP73/GOLPH2 Polyclonal antibody

Catalog Number: 15126-1-AP

Featured Product

17 Publications



## Basic Information

### Catalog Number:

15126-1-AP

### Concentration:

1000 ug/ml

### Source:

Rabbit

### Isotype:

IgG

### Immunogen Catalog Number:

AG7207

### GenBank Accession Number:

BC001740

### GeneID (NCBI):

51280

### UNIPROT ID:

Q8NBJ4

### Full Name:

golgi membrane protein 1

### Calculated MW:

45 kDa

### Observed MW:

70-75 kDa

### Purification Method:

Antigen affinity purification

### Recommended Dilutions:

WB: 1:1000-1:6000

IP: 0.5-4.0 ug for 1.0-3.0 mg of total protein lysate

IHC: 1:400-1:1600

IF/ICC: 1:200-1:800

## Applications

### Tested Applications:

WB, IHC, IF/ICC, IP, ELISA

### Cited Applications:

WB, IHC, IF

### Species Specificity:

human

### Cited Species:

human, mouse

### Positive Controls:

WB : LNCaP cells, HuH-7 cells, MDA-MB-231 cells, HepG2 cells

IP : HeLa cells,

IHC : human stomach cancer tissue, human liver cancer tissue, human stomach tissue

IF/ICC : HeLa cells,

**Note-IHC: suggested antigen retrieval with TE buffer pH 9.0; (\*) Alternatively, antigen retrieval may be performed with citrate buffer pH 6.0**

## Background Information

Golgi phosphoprotein 2 (GOLPH2, also known as GP73 or GOLM1) is a resident Golgi type-II membrane protein. It is predominantly expressed in the epithelial cells of many human tissues. GOLPH2 traffics through endosomes and can be secreted into the circulation. Its expression is upregulated in a number of tumors and GOLPH2 could be a promising serum marker for hepatocellular carcinoma. We got 70-75 kDa in western blotting due to phosphorylation.

## Notable Publications

Author	Pubmed ID	Journal	Application
Yan Lin	36211823	Oxid Med Cell Longev	IHC
Xuewu Zhang	27697522	Biochem Biophys Res Commun	WB, IF
T Wang	24720891	Curr Alzheimer Res	

## Storage

### Storage:

Store at -20°C. Stable for one year after shipment.

### Storage Buffer:

PBS with 0.02% sodium azide and 50% glycerol, pH7.3

Aliquoting is unnecessary for -20°C storage

For technical support and original validation data for this product please contact:

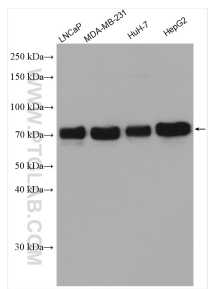
T: 4006900926

E: [Proteintech-CN@ptglab.com](mailto:Proteintech-CN@ptglab.com)

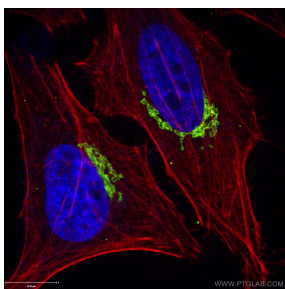
W: [ptgcn.com](http://ptgcn.com)

**This product is exclusively available under Proteintech Group brand and is not available to purchase from any other manufacturer.**

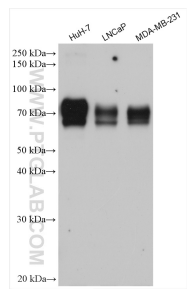
Selected Validation Data



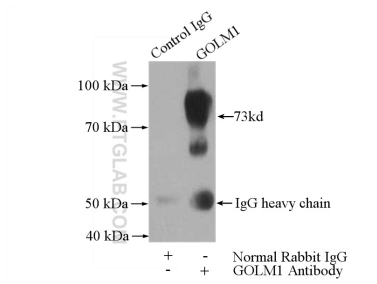
Various lysates were subjected to SDS PAGE followed by western blot with 15126-1-AP (GP73/GOLPH2 antibody) at dilution of 1:4000 incubated at room temperature for 1.5 hours.



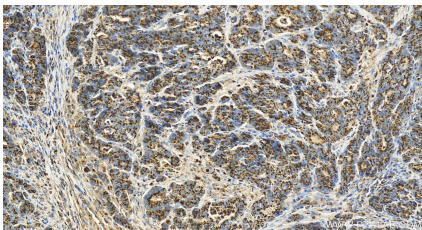
Immunofluorescent analysis of (4% PFA) fixed HeLa cells using 15126-1-AP (GP73/GOLPH2 antibody), at dilution of 1:400 and CoraLite®488-Conjugated AffiniPure Goat Anti-Rabbit IgG(H+L). The cytoskeleton and nuclei were stained with CL594-phalloidin and DAPI, respectively.



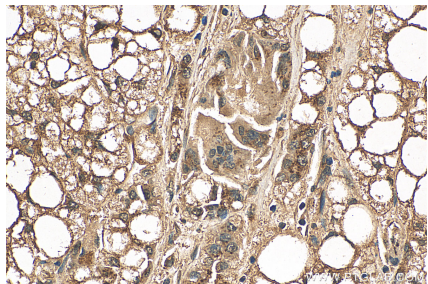
Various lysates were subjected to SDS PAGE followed by western blot with 15126-1-AP (GP73/GOLPH2 antibody) at dilution of 1:20000 incubated at room temperature for 1.5 hours.



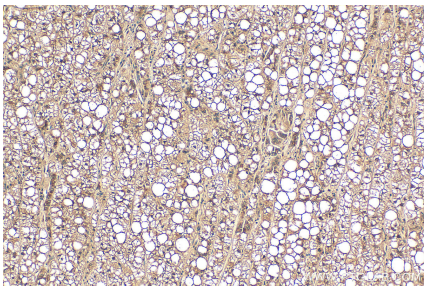
IP result of anti-GP73/GOLPH2 (IP:15126-1-AP, 4ug; Detection:15126-1-AP 1:1000) with HeLa cells lysate 2800ug.



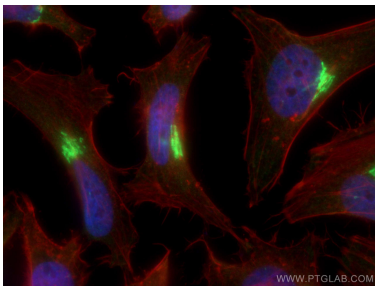
Immunohistochemical analysis of paraffin-embedded human stomach cancer tissue slide using 15126-1-AP (GP73/GOLPH2 antibody) at dilution of 1:800 (under 20x lens). Heat mediated antigen retrieval with Tris-EDTA buffer (pH 9.0).



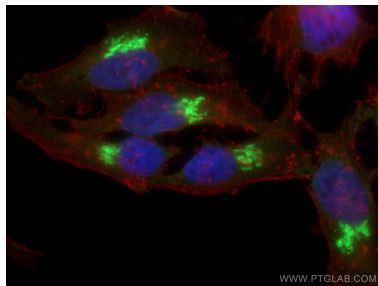
Immunohistochemical analysis of paraffin-embedded human liver cancer tissue slide using 15126-1-AP (GP73/GOLPH2 antibody) at dilution of 1:200 (under 40x lens). Heat mediated antigen retrieval with Tris-EDTA buffer (pH 9.0).



Immunohistochemical analysis of paraffin-embedded human liver cancer tissue slide using 15126-1-AP (GP73/GOLPH2 antibody) at dilution of 1:200 (under 10x lens). Heat mediated antigen retrieval with Tris-EDTA buffer (pH 9.0).



Immunofluorescent analysis of (4% PFA) fixed HeLa cells using GP73/GOLPH2 antibody (15126-1-AP) at dilution of 1:1800 and CoraLite®488-Conjugated AffiniPure Goat Anti-Rabbit IgG(H+L), CL594-Phalloidin (red).



Immunofluorescent analysis of (4% PFA) fixed HeLa cells using GP73/GOLPH2 antibody (15126-1-AP) at dilution of 1:2000 and CoraLite®488-Conjugated AffiniPure Goat Anti-Rabbit IgG(H+L), CL594-Phalloidin (red).