

METTL3 Polyclonal antibody

Catalog Number: 15073-1-AP

Featured Product

513 Publications

Basic Information

Catalog Number:

15073-1-AP

Concentration:

800 ug/ml

Source:

Rabbit

Isotype:

IgG

Immunogen Catalog Number:

AG7110

GenBank Accession Number:

BC001650

GeneID (NCBI):

56339

UNIPROT ID:

Q86U44

Full Name:

methyltransferase like 3

Calculated MW:

64 kDa

Observed MW:

65-70 kDa

Purification Method:

Antigen affinity purification

Recommended Dilutions:

WB: 1:5000-1:50000

IP: 0.5-4.0 ug for 1.0-3.0 mg of total protein lysate

IHC: 1:750-1:3000

IF-P: 1:50-1:500

IF/ICC: 1:50-1:500

Applications

Tested Applications:

WB, IHC, IF/ICC, IF-P, IP, ELISA

Cited Applications:

WB, IHC, IF, IP, CoIP, ChIP, RIP

Species Specificity:

human, mouse, rat, monkey

Cited Species:

human, mouse, rat, pig, monkey, chicken, zebrafish, hamster, goat, drosophila

Note-IHC: suggested antigen retrieval with TE buffer pH 9.0; (*) Alternatively, antigen retrieval may be performed with citrate buffer pH 6.0

Positive Controls:

WB: HEK-293 cells, HeLa cells, HT-1080 cells, mouse testis tissue, HepG2 cells, Jurkat cells, Neuro-2a cells, A549 cells, NCCIT cells, COS-7 cells, rat testis tissue

IP: HEK-293 cells,

IHC: human renal cell carcinoma tissue, human lung cancer tissue

IF-P: mouse testis tissue,

IF/ICC: MCF-7 cells,

Background Information

METTL3 is a key S-adenosyl-L-methionine-binding subunit, which is a component of a complex multicomponent enzyme that catalyzes the methylation of internal adenosine residues in eukaryotic mRNA, forming N6-methyladenosine. It contains 2 putative nuclear localization signals and 2 consensus methylation motifs. The calculated molecular weight of METTL3 is 64 kDa, but modified METTL3 is about 65-70 kDa.

Notable Publications

Author	Pubmed ID	Journal	Application
Zhang Zhang	34594034	Nat Methods	WB
Fanpeng Zhao	34593014	Mol Neurodegener	WB, IHC
Brandon J Gheller	33083017	Cell Death Discov	WB

Storage

Storage:

Store at -20°C. Stable for one year after shipment.

Storage Buffer:

PBS with 0.02% sodium azide and 50% glycerol, pH7.3

Aliquoting is unnecessary for -20°C storage

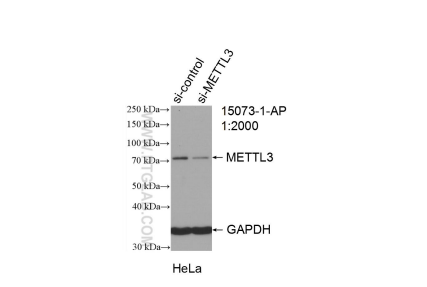
For technical support and original validation data for this product please contact:

T: 4006900926

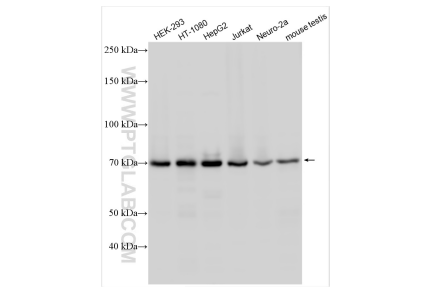
E: Proteintech-CN@ptglab.comW: ptgcn.com

This product is exclusively available under Proteintech Group brand and is not available to purchase from any other manufacturer.

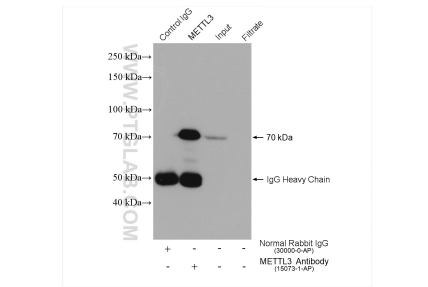
Selected Validation Data



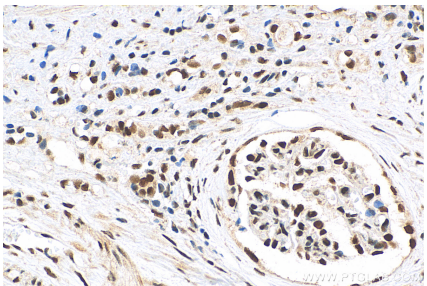
WB result of METTL3 antibody (15073-1-AP; 1:2000; incubated at room temperature for 1.5 hours) with sh-Control and sh-METTL3 transfected HeLa cells.



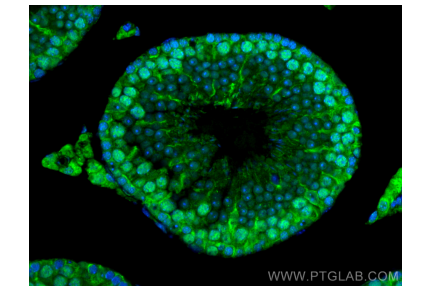
Various lysates were subjected to SDS PAGE followed by western blot with 15073-1-AP (METTL3 antibody) at dilution of 1:10000 incubated at room temperature for 1.5 hours.



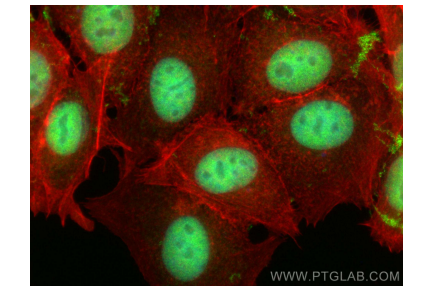
IP result of anti-METTL3 (IP:15073-1-AP, 4ug; Detection:15073-1-AP 1:4000) with HEK-293 cells lysate 1800 ug.



Immunohistochemical analysis of paraffin-embedded human renal cell carcinoma tissue slide using 15073-1-AP (METTL3 antibody) at dilution of 1:1500 (under 40x lens). Heat mediated antigen retrieval with Tris-EDTA buffer (pH 9.0).



Immunofluorescent analysis of (4% PFA) fixed paraffin-embedded mouse testis tissue using METTL3 antibody (15073-1-AP) at dilution of 1:200 and CoraLite®488-Conjugated Goat Anti-Rabbit IgG(H+L) (SA00013-2). Heat mediated antigen retrieval with Tris-EDTA buffer (pH 9.0).



Immunofluorescent analysis of (4% PFA) fixed MCF-7 cells using METTL3 antibody (15073-1-AP) at dilution of 1:200 and Multi-rAb CoraLite® Plus 488-Goat Anti-Rabbit Recombinant Secondary Antibody (H+L) (RGAR002), CL594-phalloidin (red).