

## RBX1 Polyclonal antibody

Catalog Number: 14895-1-AP

15 Publications

## Basic Information

## Catalog Number:

14895-1-AP

## Concentration:

400 µg/ml

## Source:

Rabbit

## Isotype:

IgG

## Immunogen Catalog Number:

AG6685

## GenBank Accession Number:

BC001466

## GeneID (NCBI):

9978

## UNIPROT ID:

P62877

## Full Name:

ring-box 1

## Calculated MW:

12 kDa

## Observed MW:

15 kDa

## Purification Method:

Antigen affinity purification

## Recommended Dilutions:

WB: 1:500-1:1000

IP: 0.5-4.0 µg for 1.0-3.0 mg of total protein lysate

IHC: 1:50-1:500

## Applications

## Tested Applications:

WB, IP, IHC, ELISA

## Cited Applications:

WB, IF, IP

## Species Specificity:

human

## Cited Species:

human, mouse, rat, eriocheir sinensis

**Note-IHC: suggested antigen retrieval with TE buffer pH 9.0; (\*) Alternatively, antigen retrieval may be performed with citrate buffer pH 6.0**

## Positive Controls:

WB : HeLa cells, Jurkat cells

IP : HeLa cells,

IHC : human heart tissue,

## Background Information

RBX1(RING-box protein 1) is also named as RNF75, ROC1 and is a requisite component of the multi- subunit SCF family E3s36-40. It mediates the ubiquitination and subsequent proteasomal degradation of target proteins, including proteins involved in cell cycle progression, signal transduction, transcription and transcription-coupled nucleotide excision repair.

## Notable Publications

| Author         | Pubmed ID | Journal           | Application |
|----------------|-----------|-------------------|-------------|
| Chenjia Guo    | 33227565  | Neurobiol Aging   | WB          |
| Pingzhao Zhang | 34743205  | Cell Death Differ | WB          |
| Jia-Shun Zhang | 29775751  | Gene              | WB,IF       |

## Storage

## Storage:

Store at -20°C. Stable for one year after shipment.

## Storage Buffer:

PBS with 0.02% sodium azide and 50% glycerol, pH7.3

Aliquoting is unnecessary for -20°C storage

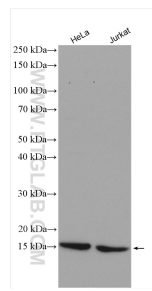
For technical support and original validation data for this product please contact:

T: 4006900926

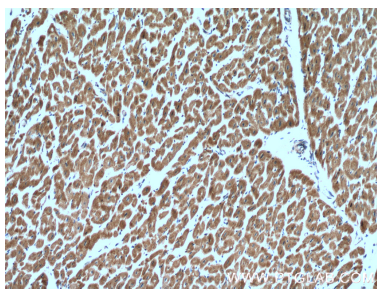
E: [Proteintech-CN@ptglab.com](mailto:Proteintech-CN@ptglab.com)W: [ptgcn.com](http://ptgcn.com)

This product is exclusively available under Proteintech Group brand and is not available to purchase from any other manufacturer.

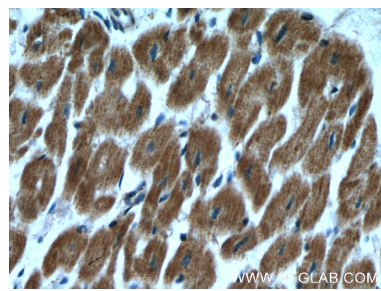
Selected Validation Data



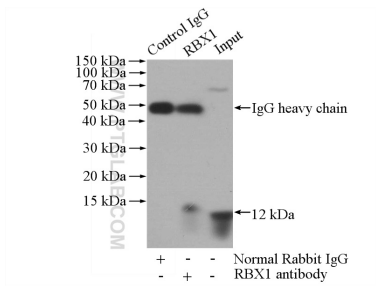
Various lysates were subjected to SDS PAGE followed by western blot with 14895-1-AP (RBX1 antibody) at dilution of 1:600 incubated at room temperature for 1.5 hours.



Immunohistochemical analysis of paraffin-embedded human heart tissue slide using 14895-1-AP (RBX1 antibody) at dilution of 1:200 (under 10x lens).



Immunohistochemical analysis of paraffin-embedded human heart tissue slide using 14895-1-AP (RBX1 antibody) at dilution of 1:200 (under 40x lens).



IP result of anti-RBX1 (IP:14895-1-AP, 4ug; Detection:14895-1-AP 1:500) with HeLa cells lysate 1520ug.