

For Research Use Only

SCLT1 Polyclonal antibody

Catalog Number: 14875-1-AP

10 Publications



Basic Information

Catalog Number:

14875-1-AP

Concentration:

600 ug/ml

Source:

Rabbit

Isotype:

IgG

Immunogen Catalog Number:

AG6646

GenBank Accession Number:

BC064428

GeneID (NCBI):

132320

UNIPROT ID:

Q96NL6

Full Name:

sodium channel and clathrin linker 1

Calculated MW:

81 kDa

Observed MW:

36 kDa, 75-80 kDa

Purification Method:

Antigen affinity purification

Recommended Dilutions:

WB: 1:1000-1:6000

IP: 0.5-4.0 ug for 1.0-3.0 mg of total protein lysate

IHC: 1:600-1:2400

IF/ICC: 1:300-1:1200

Applications

Tested Applications:

WB, IHC, IF/ICC, IP, ELISA

Cited Applications:

WB, IF

Species Specificity:

human, mouse, rat

Cited Species:

human, mouse

Note-IHC: suggested antigen retrieval with TE buffer pH 9.0; (*) Alternatively, antigen retrieval may be performed with citrate buffer pH 6.0

Positive Controls:

WB : HEK-293 cells, mouse brain tissue, COLO 320 cells, rat brain tissue, HeLa cells

IP : human placenta tissue,

IHC : human colon cancer tissue,

IF/ICC : hTERT-RPE1 cells,

Background Information

Notable Publications

Author	Pubmed ID	Journal	Application
Hao Yan	32366837	Nat Commun	IF
Chuan Chen	34162535	Sci Adv	IF
Tomoharu Kanie	28625565	Dev Cell	IF

Storage

Storage:

Store at -20°C. Stable for one year after shipment.

Storage Buffer:

PBS with 0.02% sodium azide and 50% glycerol, pH7.3

Aliquoting is unnecessary for -20°C storage

For technical support and original validation data for this product please contact:

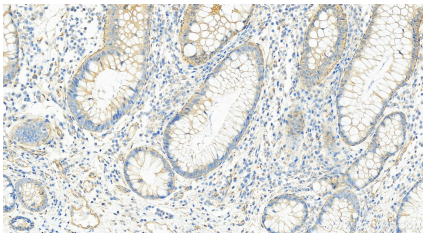
T: 4006900926

E: Proteintech-CN@ptglab.com

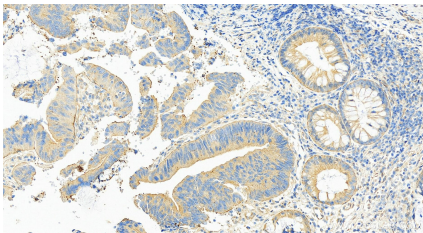
W: ptgcn.com

This product is exclusively available under Proteintech Group brand and is not available to purchase from any other manufacturer.

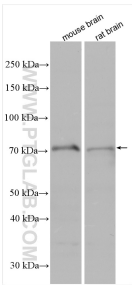
Selected Validation Data



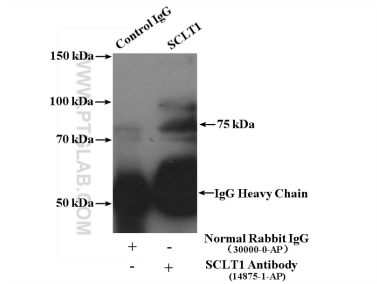
Immunohistochemical analysis of paraffin-embedded human colon cancer tissue slide using 14875-1-AP (SCLT1 antibody) at dilution of 1:1200 (under 20x lens). Heat mediated antigen retrieval with Tris-EDTA buffer (pH 9.0).



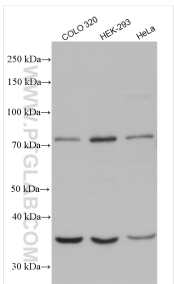
Immunohistochemical analysis of paraffin-embedded human colon cancer tissue slide using 14875-1-AP (SCLT1 antibody) at dilution of 1:1200 (under 20x lens). Heat mediated antigen retrieval with Tris-EDTA buffer (pH 9.0).



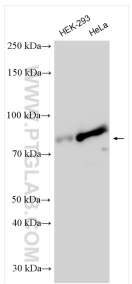
Various lysates were subjected to SDS PAGE followed by western blot with 14875-1-AP (SCLT1 antibody) at dilution of 1:1000 incubated at room temperature for 1.5 hours.



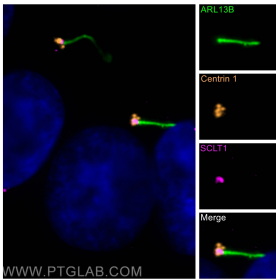
IP result of anti-SCLT1 (IP:14875-1-AP, 4ug; Detection:14875-1-AP 1:1000) with human placenta tissue lysate 4000ug.



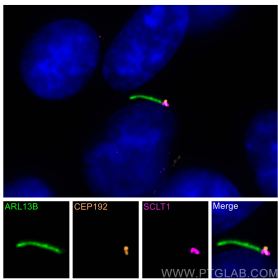
Various lysates were subjected to SDS PAGE followed by western blot with 14875-1-AP (SCLT1 antibody) at dilution of 1:1000 incubated at room temperature for 1.5 hours.



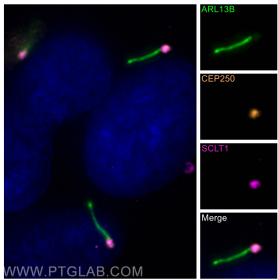
Various lysates were subjected to SDS PAGE followed by western blot with 14875-1-AP (SCLT1 antibody) at dilution of 1:3000 incubated at room temperature for 1.5 hours.



Immunofluorescent analysis of (-20°C Methanol) fixed hTERT-RPE1 cells using SCLT1 antibody (14875-1-AP) at dilution of 1:600 and CoraLite® Plus 647-conjugated AffiniPure F(ab, CoraLite® Plus 488 ARL13B antibody (CL488-17711, green), Centrin 1 antibody (12794-1-AP, orange).



Immunofluorescent analysis of (-20°C Methanol) fixed hTERT-RPE1 cells using SCLT1 antibody (14875-1-AP) at dilution of 1:600 and CoraLite® Plus 647-conjugated AffiniPure F(ab, CEP192 antibody (18832-1-AP, orange), CoraLite® Plus 488 ARL13B antibody (CL488-17711, green).



Immunofluorescent analysis of (-20°C Methanol) fixed hTERT-RPE1 cells using SCLT1 antibody (14875-1-AP) at dilution of 1:600 and CoraLite® Plus 647-conjugated AffiniPure F(ab, CoraLite® Plus 488 ARL13B antibody (CL488-17711, green), CEP250/CNAP1 antibody (14498-1-AP, orange).