

For Research Use Only

GCLM Polyclonal antibody

Catalog Number: 14241-1-AP

Featured Product

151 Publications



Basic Information

Catalog Number:

14241-1-AP

Concentration:

550 ug/ml

Source:

Rabbit

Isotype:

IgG

Immunogen Catalog Number:

AG5497

GenBank Accession Number:

BC041809

GeneID (NCBI):

2730

UNIPROT ID:

P48507

Full Name:

glutamate-cysteine ligase, modifier subunit

Calculated MW:

31 kDa

Observed MW:

31 kDa

Purification Method:

Antigen affinity purification

Recommended Dilutions:

WB: 1:2000-1:10000

IP: 0.5-4.0 ug for 1.0-3.0 mg of total protein lysate

IHC: 1:400-1:1600

IF/ICC: 1:50-1:500

FC (Intra): 0.25 ug per 10⁶ cells in a 100 µl suspension

Applications

Tested Applications:

WB, IHC, IF/ICC, FC (Intra), IP, ELISA

Cited Applications:

WB, IHC, IF

Species Specificity:

human, mouse, rat

Cited Species:

human, mouse, rat, goat

Note-IHC: suggested antigen retrieval with TE buffer pH 9.0; (*) Alternatively, antigen retrieval may be performed with citrate buffer pH 6.0

Positive Controls:

WB: A431 cells, HeLa cells, L02 cells, mouse liver tissue, rat liver tissue, HepG2 cells

IP: A431 cells,

IHC: human liver cancer tissue, human skeletal muscle tissue, mouse skeletal muscle tissue

IF/ICC: HepG2 cells,

FC (Intra): HepG2 cells,

Background Information

GCLM (Glutamate--cysteine ligase regulatory subunit) is also named as GLCLR and belongs to the aldo/keto reductase family. It catalyzes the first step of GSH synthesis and is involved in gamma-glutamyl cycle. GCLM is implicated in some forms of hemolytic anemia.

Notable Publications

Author	Pubmed ID	Journal	Application
Lin-Tao Xu	34601084	J Ethnopharmacol	WB
Jiawen Zheng	31569771	Mar Drugs	WB
Jie Deng	34565300	Bioengineered	WB

Storage

Storage:

Store at -20°C. Stable for one year after shipment.

Storage Buffer:

PBS with 0.02% sodium azide and 50% glycerol, pH7.3

Aliquoting is unnecessary for -20°C storage

For technical support and original validation data for this product please contact:

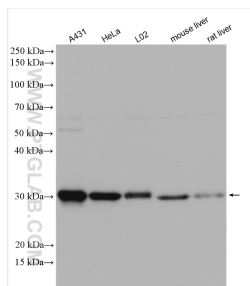
T: 4006900926

E: Proteintech-CN@ptglab.com

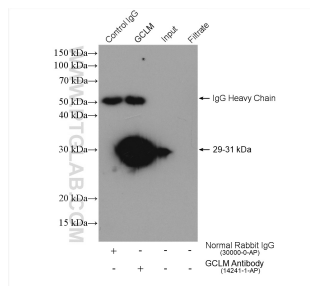
W: ptgcn.com

This product is exclusively available under Proteintech Group brand and is not available to purchase from any other manufacturer.

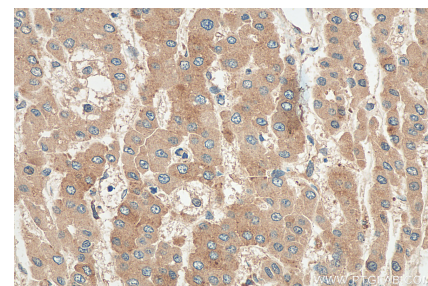
Selected Validation Data



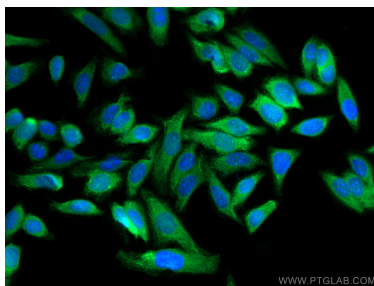
Various lysates were subjected to SDS PAGE followed by western blot with 14241-1-AP (GCLM antibody) at dilution of 1:5000 incubated at room temperature for 1.5 hours.



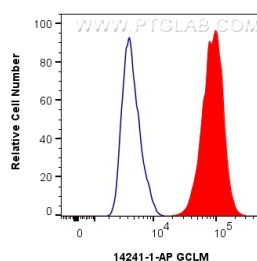
IP result of anti-GCLM (IP:14241-1-AP, 4ug; Detection:14241-1-AP 1:2000) with A431 cells lysate 1000 ug.



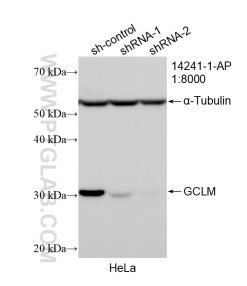
Immunohistochemical analysis of paraffin-embedded human liver cancer tissue slide using 14241-1-AP (GCLM antibody) at dilution of 1:800 (under 40x lens). Heat mediated antigen retrieval with Tris-EDTA buffer (pH 9.0).



Immunofluorescent analysis of (-20°C Methanol) fixed HepG2 cells using GCLM antibody (14241-1-AP) at dilution of 1:200 and CoraLite®488-Conjugated AffiniPure Goat Anti-Rabbit IgG(H+L).



1x10⁶ HepG2 cells were intracellularly stained with 0.25 ug GCLM Polyclonal antibody (14241-1-AP) and CoraLite®488-Conjugated Goat Anti-Rabbit IgG(H+L) (SA00013-2)(red), or 0.25 ug Rabbit IgG control Rabbit PolyAb (30000-0-AP) (blue). Cells were fixed with 4% PFA and permeabilized with Flow Cytometry Perm Buffer (PF00011-C).



WB result of GCLM antibody (14241-1-AP; 1:8000; incubated at room temperature for 1.5 hours) with sh-Control and sh-GCLM transfected HeLa cells.