

For Research Use Only

SOCS3 Polyclonal antibody

Catalog Number:14025-1-AP

Featured Product

75 Publications



Basic Information

Catalog Number:

14025-1-AP

Concentration:

1000 ug/ml

Source:

Rabbit

Isotype:

IgG

Immunogen Catalog Number:

AG5170

GenBank Accession Number:

BC060858

GeneID (NCBI):

9021

UNIPROT ID:

O14543

Full Name:

suppressor of cytokine signaling 3

Calculated MW:

25 kDa

Observed MW:

25-30 kDa

Purification Method:

Antigen affinity purification

Recommended Dilutions:

WB: 1:1000-1:4000

IP: 0.5-4.0 ug for 1.0-3.0 mg of total protein lysate

IHC: 1:200-1:800

Applications

Tested Applications:

WB, IHC, IP, ELISA

Cited Applications:

WB, IHC, IF, IP, CoIP

Species Specificity:

human

Cited Species:

human, mouse, rat, pig, chicken

Positive Controls:

WB : HeLa cells,

IP : K-562 cells,

IHC : human skin cancer tissue,

Note-IHC: suggested antigen retrieval with TE buffer pH 9.0; (*) Alternatively, antigen retrieval may be performed with citrate buffer pH 6.0

Background Information

The suppressor of cytokine signaling (SOCS) family proteins are negative feedback system that inhibits cytokine signal transduction. One of the SOCS family, SOCS3, also named CIS3 and SSI3, is involved in inhibition of JAK/STAT pathway which regulates IL-6 signaling in vivo. SOCS3 can be rapidly trigger by a number of factors including interleukins, IFN-gamma and TNF-alpha. Pathology such as inflammatory response, wound repair and obesity and so on have been linked to SOCS3. Observed MW of SOCS3 is from 22-30 kDa(PMID: 24827536,PMID: 26260587, PMID: 26797799), consistent with the result of Catalog#14025-1-AP.

Notable Publications

Author	Pubmed ID	Journal	Application
Kai Yang	34586888	Int J Immunopathol Pharmacol	IHC
Liang Wang	34594215	Front Pharmacol	
Pilar Argente-Arizón	29077836	Endocrinology	WB

Storage

Storage:

Store at -20°C. Stable for one year after shipment.

Storage Buffer:

PBS with 0.02% sodium azide and 50% glycerol, pH7.3

Aliquoting is unnecessary for -20°C storage

For technical support and original validation data for this product please contact:

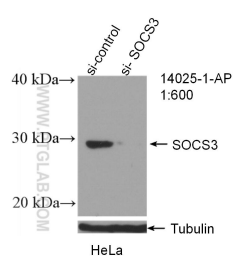
T: 4006900926

E: Proteintech-CN@ptglab.com

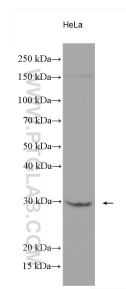
W: ptgcn.com

This product is exclusively available under Proteintech Group brand and is not available to purchase from any other manufacturer.

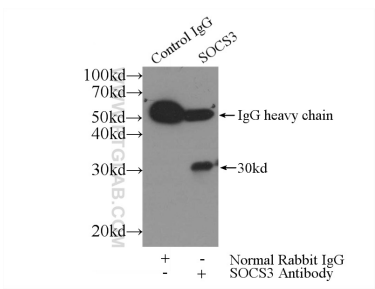
Selected Validation Data



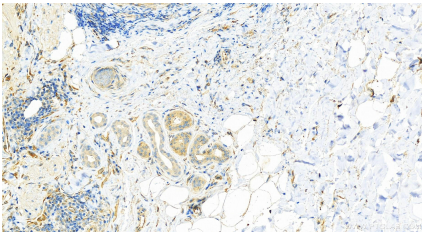
WB result of SOCS3 antibody (14025-1-AP; 1:600; incubated at room temperature for 1.5 hours) with sh-Control and sh-SOCS3 transfected HeLa cells.



HeLa cells were subjected to SDS PAGE followed by western blot with 14025-1-AP (SOCS3 antibody) at dilution of 1:2000 incubated at room temperature for 1.5 hours.



IP result of anti-SOCS3 (IP:14025-1-AP, 4ug; Detection:14025-1-AP 1:500) with K-562 cells lysate 1720ug.



Immunohistochemical analysis of paraffin-embedded skin cancer slide using 14025-1-AP (SOCS3 antibody) at dilution of 1:400 (under 20x lens). Heat mediated antigen retrieval with Tris-EDTA buffer (pH 9.0).