

# Serpin E1/PAI-1 Polyclonal antibody

Catalog Number: 13801-1-AP

67 Publications

## Basic Information

## Catalog Number:

13801-1-AP

## Concentration:

700 ug/ml

## Source:

Rabbit

## Isotype:

IgG

## Immunogen Catalog Number:

AG4777

## GenBank Accession Number:

BC010860

## GeneID (NCBI):

5054

## UNIPROT ID:

P05121

## Full Name:

serpin peptidase inhibitor, clade E (nexin, plasminogen activator inhibitor type 1), member 1

## Calculated MW:

402 aa, 45 kDa

## Observed MW:

45 kDa

## Purification Method:

Antigen affinity purification

## Recommended Dilutions:

WB: 1:1000-1:4000

IP: 0.5-4.0 ug for 1.0-3.0 mg of total protein lysate

IHC: 1:200-1:800

IF/ICC: 1:200-1:800

## Applications

## Tested Applications:

WB, IHC, IF/ICC, IP, ELISA

## Cited Applications:

WB, IHC, IF, ColP

## Species Specificity:

human

## Cited Species:

human, bovine

## Positive Controls:

WB : HepG2 cells, HuH-7 cells, L02 cells, MG-63 cells, U2OS cells, human placenta tissue

IP : HUVEC cells,

IHC : human placenta tissue, human malignant melanoma tissue

IF/ICC : HepG2 cells,

**Note-IHC: suggested antigen retrieval with TE buffer pH 9.0; (\*) Alternatively, antigen retrieval may be performed with citrate buffer pH 6.0**

## Background Information

SERPINE1, also named as Plasminogen activator inhibitor type 1 (PAI-1), is a member of the serine protease inhibitor (SERPIN) superfamily. PAI-1 is the principal inhibitor of tPA and uPA, and hence is an inhibitor of fibrinolysis. Defects in this gene are the cause of plasminogen activator inhibitor-1 deficiency (PAI-1 deficiency), and high concentrations of the gene product are associated with thrombophilia. In western blotting, we got two bands 50 kDa and 90-110 kDa, and 90-110 kDa consistent with PAI-1 in complex with its target protease, t-PA (PMID: 21596853).

## Notable Publications

Author	Pubmed ID	Journal	Application
Yasuhiro Nanri	31505128	Am J Respir Cell Mol Biol	IHC
Zengqiang Miao	31734109	J Microbiol Immunol Infect	WB
Muhammad Khan	36389725	Front Immunol	IHC

## Storage

## Storage:

Store at -20°C. Stable for one year after shipment.

## Storage Buffer:

PBS with 0.02% sodium azide and 50% glycerol, pH7.3

Aliquoting is unnecessary for -20°C storage

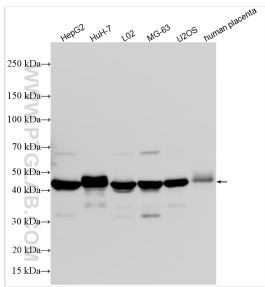
For technical support and original validation data for this product please contact:

T: 4006900926

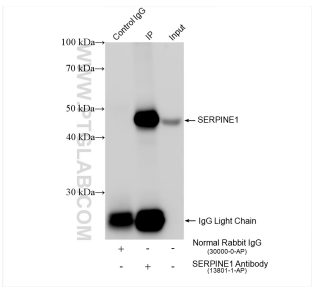
E: [Proteintech-CN@ptglab.com](mailto:Proteintech-CN@ptglab.com)W: [ptgcn.com](http://ptgcn.com)

**This product is exclusively available under Proteintech Group brand and is not available to purchase from any other manufacturer.**

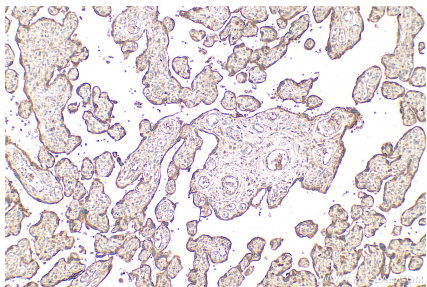
Selected Validation Data



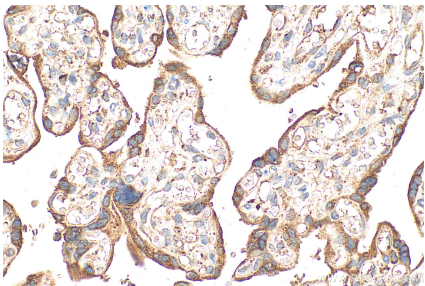
Various lysates were subjected to SDS PAGE followed by western blot with 13801-1-AP (Serpine E1/PAI-1 antibody) at dilution of 1:2000 incubated at room temperature for 1.5 hours.



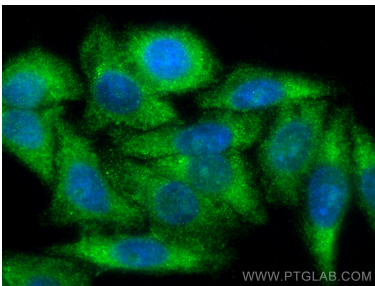
IP result of anti-Serpine E1/PAI-1 (IP:13801-1-AP, 4ug; Detection:13801-1-AP 1:4000) with HUVEC cells lysate 840 ug.



Immunohistochemical analysis of paraffin-embedded human placenta tissue slide using 13801-1-AP (Serpine E1/PAI-1 antibody) at dilution of 1:400 (under 10x lens). Heat mediated antigen retrieval with Tris-EDTA buffer (pH 9.0).



Immunohistochemical analysis of paraffin-embedded human placenta tissue slide using 13801-1-AP (Serpine E1/PAI-1 antibody) at dilution of 1:400 (under 40x lens). Heat mediated antigen retrieval with Tris-EDTA buffer (pH 9.0).



Immunofluorescent analysis of (-20°C Ethanol) fixed HepG2 cells using Serpine E1/PAI-1 antibody (13801-1-AP) at dilution of 1:400 and CoraLite® 488-Conjugated Goat Anti-Rabbit IgG(H+L) (SA00013-2).