

For Research Use Only

FDFT1 Polyclonal antibody

Catalog Number: 13128-1-AP

Featured Product

20 Publications



Basic Information

Catalog Number:

13128-1-AP

Concentration:

500 ug/ml

Source:

Rabbit

Isotype:

IgG

Immunogen Catalog Number:

AG3743

GenBank Accession Number:

BC029641

GeneID (NCBI):

2222

UNIPROT ID:

P37268

Full Name:

farnesyl-diphosphate
farnesyltransferase 1

Calculated MW:

417 aa, 48 kDa

Observed MW:

48 kDa

Purification Method:

Antigen affinity purification

Recommended Dilutions:

WB: 1:1000-1:4000

IP: 0.5-4.0 ug for 1.0-3.0 mg of total
protein lysate

IHC: 1:50-1:500

IF/ICC: 1:200-1:800

Applications

Tested Applications:

WB, IHC, IF/ICC, IP, ELISA

Cited Applications:

WB, IHC

Species Specificity:

human

Cited Species:

human, mouse

Positive Controls:

WB : HepG2 cells, T-47D cells

IP : COLO 320 cells,

IHC : human ovary cancer tissue,

IF/ICC : HepG2 cells,

**Note-IHC: suggested antigen retrieval with
TE buffer pH 9.0; (*) Alternatively, antigen
retrieval may be performed with citrate
buffer pH 6.0**

Background Information

Farnesyl-diphosphate farnesyltransferase 1 (FDFT1), also known as SQS, is a gene that encodes the membrane-associated enzyme squalene synthase, which is the first specific enzyme in cholesterol biosynthesis. FDFT1 is highly expressed in liver, lung, prostate, breast, ovary, bladder, cervix, thyroid, and esophageal cancers, while in colorectal, colon, testicular, uterine, pancreas, and kidney tumors, its expression is downregulated (PMID: 35093030). FDFT1 is a key downstream target of the fasting response and may be involved in CRC cell glucose metabolism (PMID: 32313017).

Notable Publications

Author	Pubmed ID	Journal	Application
Jiaojiao Lu	32877662	Arch Biochem Biophys	WB,IHC
Douglas E Biancur	33152323	Cell Metab	WB
Xiao-Yi Lu	33177714	Nature	WB

Storage

Storage:

Store at -20°C. Stable for one year after shipment.

Storage Buffer:

PBS with 0.02% sodium azide and 50% glycerol, pH7.3

Aliquoting is unnecessary for -20°C storage

For technical support and original validation data for this product please contact:

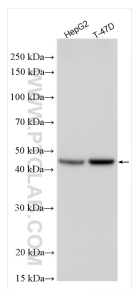
T: 4006900926

E: Proteintech-CN@ptglab.com

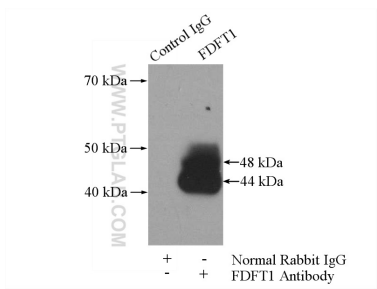
W: ptgcn.com

This product is exclusively available under Proteintech Group brand and is not available to purchase from any other manufacturer.

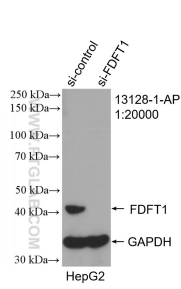
Selected Validation Data



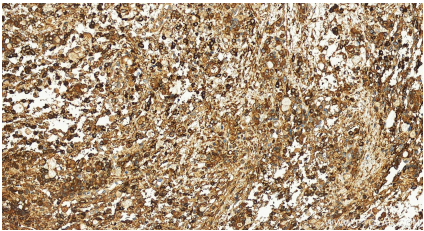
Various lysates were subjected to SDS PAGE followed by western blot with 13128-1-AP (FDFT1 antibody) at dilution of 1:2000 incubated at room temperature for 1.5 hours.



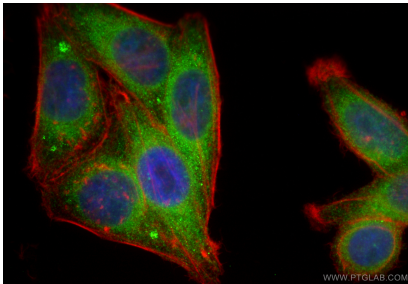
IP result of anti-FDFT1 (IP:13128-1-AP, 4ug; Detection:13128-1-AP 1:500) with COLO 320 cells lysate 2400ug.



WB result of FDFT1 antibody (13128-1-AP; 1:20000; incubated at room temperature for 1.5 hours) with sh-Control and sh-FDFT1 transfected HepG2 cells.



Immunohistochemical analysis of paraffin-embedded human ovary cancer tissue slide using 13128-1-AP (FDFT1 antibody) at dilution of 1:200 (under 20x lens). Heat mediated antigen retrieval with Tris-EDTA buffer (pH 9.0).



Immunofluorescent analysis of (4% PFA) fixed HepG2 cells using FDFT1 antibody (13128-1-AP) at dilution of 1:400 and Multi-rAb Coralite @ Plus 488-Goat Anti-Rabbit Recombinant Secondary Antibody (H+L) (RGAR002), CL594-phalloidin (red).