

For Research Use Only

WT1 Polyclonal antibody

Catalog Number: 12609-1-AP

Featured Product

51 Publications



Basic Information

Catalog Number:

12609-1-AP

Concentration:

800 ug/ml

Source:

Rabbit

Isotype:

IgG

Immunogen Catalog Number:

AG3337

GenBank Accession Number:

BC032861

GeneID (NCBI):

7490

UNIPROT ID:

P19544

Full Name:

Wilms tumor 1

Calculated MW:

449 aa, 49 kDa, 57 kDa

Observed MW:

52-55 kDa

Purification Method:

Antigen affinity purification

Recommended Dilutions:

WB: 1:500-1:1000

IP: 0.5-4.0 ug for 1.0-3.0 mg of total protein lysate

IF/ICC: 1:50-1:500

FC (Intra): 0.40 ug per 10⁶ cells in a 100 µl suspension

Applications

Tested Applications:

WB, IF/ICC, FC (Intra), IP, ELISA

Cited Applications:

WB, IF, chIP

Species Specificity:

human, mouse, rat

Cited Species:

human, mouse, rat, chicken, bovine, goat

Positive Controls:

WB : K-562 cells, A431 cells, MCF-7 cells, mouse kidney tissue, rat kidney tissue, MOLT-4 cells

IP : K-562 cells,

IF/ICC : K-562 cells,

FC (Intra) : K-562 cells,

Background Information

The WT1 gene encodes a zinc finger DNA-binding protein that acts as a transcriptional activator or repressor depending on the cellular or chromosomal context, and it is required for normal formation of the genitourinary system and mesothelial tissues. WT1 inhibits apoptosis through p53 and Bcl-2 and also inhibits the differentiation of leukemic cells. Function of WT1 may be isoform-specific: isoforms lacking the KTS motif may act as transcription factors. Isoforms containing the KTS motif may bind mRNA and play a role in mRNA metabolism or splicing. Isoform 1 has lower affinity for DNA, and can bind RNA. WT1 exists some isoforms with the range of molecular weight is 33-50 kDa.

Notable Publications

Author	Pubmed ID	Journal	Application
G Hua	26364602	Oncogene	WB,IHC
Zhengming Zhu	34490476	Mol Med Rep	WB
Xian Wang	36147345	Front Pharmacol	WB

Storage

Storage:

Store at -20°C. Stable for one year after shipment.

Storage Buffer:

PBS with 0.02% sodium azide and 50% glycerol, pH7.3

Aliquoting is unnecessary for -20°C storage

For technical support and original validation data for this product please contact:

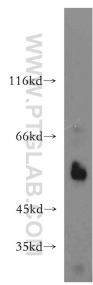
T: 4006900926

E: Proteintech-CN@ptglab.com

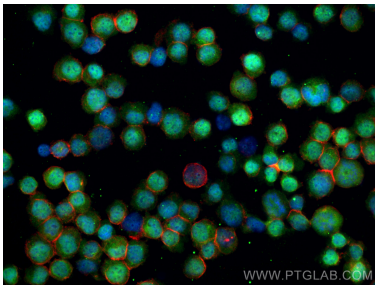
W: ptgcn.com

This product is exclusively available under Proteintech Group brand and is not available to purchase from any other manufacturer.

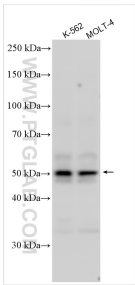
Selected Validation Data



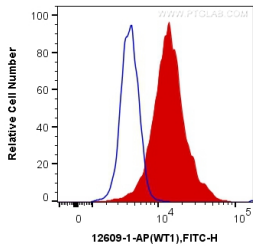
K-562 cells were subjected to SDS PAGE followed by western blot with 12609-1-AP (WT1 antibody) at dilution of 1:500 incubated at room temperature for 1.5 hours.



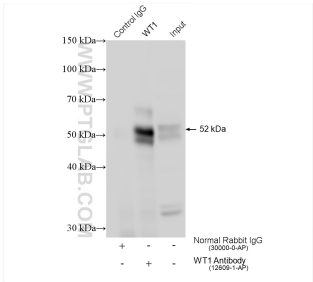
Immunofluorescent analysis of (4% PFA) fixed K-562 cells using WT1 antibody (12609-1-AP) at dilution of 1:200 and CoraLite®488-Conjugated AffiniPure Goat Anti-Rabbit IgG(H+L), CL594-Phalloidin (red).



Various lysates were subjected to SDS PAGE followed by western blot with 12609-1-AP (WT1 antibody) at dilution of 1:3000 incubated at room temperature for 1.5 hours.



1X10⁶ K-562 cells were intracellularly stained with 0.4 ug Anti-Human WT1 (12609-1-AP) and CoraLite®488-Conjugated AffiniPure Goat Anti-Rabbit IgG(H+L) at dilution 1:1000 (red), or 0.4 ug Control Antibody. Cells were fixed and permeabilized with Transcription Factor Staining Buffer Kit (PF00011).



IP result of anti-WT1 (IP:12609-1-AP, 4ug; Detection:12609-1-AP 1:1000) with K-562 cells lysate 1360 ug.