

For Research Use Only

GSTM1 Polyclonal antibody

Catalog Number: 12412-1-AP

Featured Product

26 Publications



Basic Information

Catalog Number:

12412-1-AP

Concentration:

300 ug/ml

Source:

Rabbit

Isotype:

IgG

Immunogen Catalog Number:

AG3113

GenBank Accession Number:

BC024005

GeneID (NCBI):

2944

UNIPROT ID:

P09488

Full Name:

glutathione S-transferase mu 1

Calculated MW:

181 aa, 21 kDa

Observed MW:

27 kDa

Purification Method:

Antigen affinity purification

Recommended Dilutions:

WB: 1:1000-1:4000

IHC: 1:50-1:500

IF/ICC: 1:50-1:500

Applications

Tested Applications:

WB, IHC, IF/ICC, ELISA

Cited Applications:

WB, IHC, IF

Species Specificity:

human, mouse, rat

Cited Species:

human, mouse, rat

Note-IHC: suggested antigen retrieval with TE buffer pH 9.0; (*) Alternatively, antigen retrieval may be performed with citrate buffer pH 6.0

Positive Controls:

WB : mouse liver tissue, mouse ovary tissue, HeLa cells, mouse kidney tissue, rat liver

IHC : mouse liver tissue, human gliomas tissue

IF/ICC : HeLa cells,

Background Information

GSTM1 belongs to the superfamily of glutathione-S-transferases (GSTs) of phase 2 enzymes that catalyze a number of distinct glutathione-dependent reactions. GSTM1 gene has been a natural candidate in studies of susceptibility to inflammatory airway diseases with environmental components because of the high prevalence of the null polymorphism and its role in detoxification (PMID: 22683820).

Notable Publications

Author	Pubmed ID	Journal	Application
Haibo Zhang	34671938	Reprod Sci	IHC
Peipei Li	35621716	FASEB J	WB
Yin Dongliang	35580023	J Med Microbiol	WB

Storage

Storage:

Store at -20°C. Stable for one year after shipment.

Storage Buffer:

PBS with 0.02% sodium azide and 50% glycerol, pH7.3

Aliquoting is unnecessary for -20°C storage

For technical support and original validation data for this product please contact:

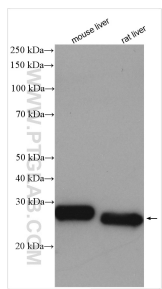
T: 4006900926

E: Proteintech-CN@ptglab.com

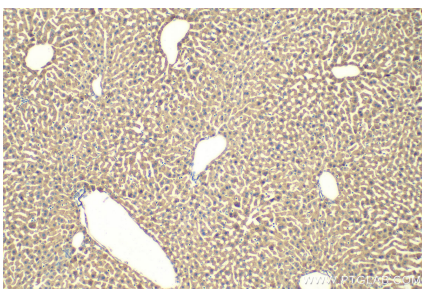
W: ptgcn.com

This product is exclusively available under Proteintech Group brand and is not available to purchase from any other manufacturer.

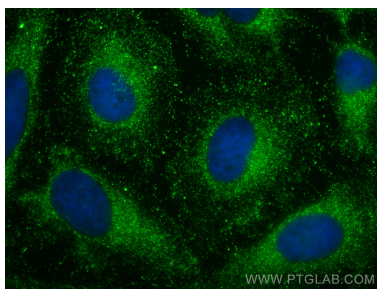
Selected Validation Data



Various lysates were subjected to SDS PAGE followed by western blot with 12412-1-AP (GSTM1 antibody) at dilution of 1:2000 incubated at room temperature for 1.5 hours.



Immunohistochemical analysis of paraffin-embedded mouse liver tissue slide using 12412-1-AP (GSTM1 antibody) at dilution of 1:200 (under 10x lens). Heat mediated antigen retrieval with Tris-EDTA buffer (pH 9.0).



Immunofluorescent analysis of (-20°C Methanol) fixed HeLa cells using GSTM1 antibody (12412-1-AP) at dilution of 1:200 and CoraLite®488-Conjugated AffiniPure Goat Anti-Rabbit IgG(H+L).