

For Research Use Only

NDP52 Polyclonal antibody

Catalog Number: 12229-1-AP

Featured Product

60 Publications



Basic Information

Catalog Number:

12229-1-AP

Concentration:

600 ug/ml

Source:

Rabbit

Isotype:

IgG

Immunogen Catalog Number:

AG2866

GenBank Accession Number:

BC015893

GeneID (NCBI):

10241

UNIPROT ID:

Q13137

Full Name:

calcium binding and coiled-coil domain 2

Calculated MW:

446 aa, 52 kDa

Observed MW:

52 kDa

Purification Method:

Antigen affinity purification

Recommended Dilutions:

WB: 1:500-1:2000

IP: 0.5-4.0 ug for 1.0-3.0 mg of total protein lysate

IHC: 1:200-1:800

IF/ICC: 1:200-1:800

Applications

Tested Applications:

WB, IHC, IF/ICC, IP, ELISA

Cited Applications:

WB, IHC, IF, IP, CoIP

Species Specificity:

human, mouse, rat

Cited Species:

human, mouse, rat, pig, monkey

Note-IHC: suggested antigen retrieval with TE buffer pH 9.0; (*) Alternatively, antigen retrieval may be performed with citrate buffer pH 6.0

Positive Controls:

WB : HeLa cells, rat skeletal muscle tissue

IP : HeLa cells,

IHC : human ovary cancer tissue, human ovary tumor tissue, human skeletal muscle tissue

IF/ICC : HeLa cells,

Background Information

NDP52, also named as CALCOCO2, is an autophagy receptor. It plays a role in ruffle formation and actin cytoskeleton organization. Mouse/Rat NDP52 has some isoforms with MW 28-40 kDa and 67 kDa. Human NDP52 has some isoforms with MW 43-47 kDa and 52-55 kDa,

Notable Publications

| Author | Pubmed ID | Journal | Application |
|------------------|-----------|---------------------|-------------|
| Shouheng Jin | 28965816 | Mol Cell | WB |
| Sebastian Boland | 36207292 | Nat Commun | WB |
| Jureepon Roboon | 36274991 | Front Cell Neurosci | WB |

Storage

Storage:

Store at -20°C. Stable for one year after shipment.

Storage Buffer:

PBS with 0.02% sodium azide and 50% glycerol, pH7.3

Aliquoting is unnecessary for -20°C storage

For technical support and original validation data for this product please contact:

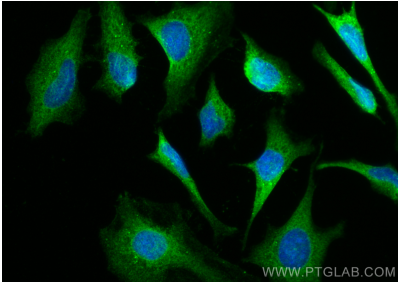
T: 4006900926

E: Proteintech-CN@ptglab.com

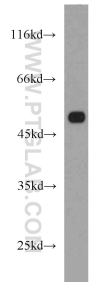
W: ptgcn.com

This product is exclusively available under Proteintech Group brand and is not available to purchase from any other manufacturer.

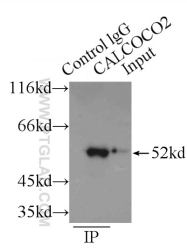
Selected Validation Data



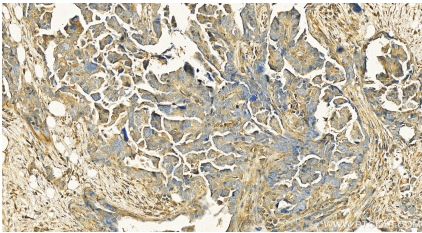
Immunofluorescent analysis of (-20°C Methanol) fixed HeLa cells using NDP52 antibody (12229-1-AP) at dilution of 1:400 and CoraLite®488-Conjugated AffiniPure Goat Anti-Rabbit IgG(H+L).



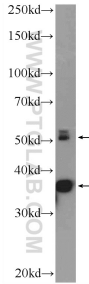
HeLa cells were subjected to SDS PAGE followed by western blot with 12229-1-AP (NDP52 antibody) at dilution of 1:1000 incubated at room temperature for 1.5 hours.



IP result of anti-NDP52 (IP:12229-1-AP, 3ug; Detection:12229-1-AP 1:1000) with HeLa cells lysate 2150ug.



Immunohistochemical analysis of paraffin-embedded human ovarian cancer slide using 12229-1-AP (NDP52 antibody) at dilution of 1:400 (under 20x lens). Heat mediated antigen retrieval with Tris-EDTA buffer (pH 9.0).



rat skeletal muscle tissue were subjected to SDS PAGE followed by western blot with 12229-1-AP (NDP52 Antibody) at dilution of 1:1000 incubated at room temperature for 1.5 hours.