

For Research Use Only

SSBP1 Polyclonal antibody

Catalog Number: 12212-1-AP

Featured Product

29 Publications



Basic Information

Catalog Number:

12212-1-AP

Concentration:

800 ug/ml

Source:

Rabbit

Isotype:

IgG

Immunogen Catalog Number:

AG2860

GenBank Accession Number:

BC000895

GeneID (NCBI):

6742

UNIPROT ID:

Q04837

Full Name:

single-stranded DNA binding protein 1

Calculated MW:

148 aa, 17 kDa

Observed MW:

17 kDa

Purification Method:

Antigen affinity purification

Recommended Dilutions:

WB: 1:500-1:1000

IP: 0.5-4.0 ug for 1.0-3.0 mg of total protein lysate

IHC: 1:50-1:500

IF/ICC: 1:50-1:500

Applications

Tested Applications:

WB, IHC, IF/ICC, IP, ELISA

Cited Applications:

WB, IHC, IF, ChIP

Species Specificity:

human, mouse, rat

Cited Species:

human, mouse, zebrafish

Positive Controls:

WB : A549 cells, mouse pancreas tissue, A375 cells, rat pancreas tissue, Caco-2 cells

IP : A375 cells,

IHC : human stomach cancer tissue, human ovary cancer tissue

IF/ICC : A375 cells,

Note-IHC: suggested antigen retrieval with TE buffer pH 9.0; (*) Alternatively, antigen retrieval may be performed with citrate buffer pH 6.0

Background Information

SSBP1 is a housekeeping gene involved in mitochondrial biogenesis. It binds preferentially and cooperatively to ss-DNA in the maintenance of genome stability. SSBP1 acted as a homotetramer to stabilize the displaced single strand of the normal and expanded displacement loop (D loop) during mtDNA replication, thus preventing formation of secondary single-stranded DNA structures, which could stop the gamma-DNA polymerase

Notable Publications

Author	Pubmed ID	Journal	Application
Timo Rey	32989247	Nat Cell Biol	WB
Margaret A Gustafson	31479473	PLoS One	WB
Aindrila Chatterjee	27768893	Cell	WB

Storage

Storage:

Store at -20°C. Stable for one year after shipment.

Storage Buffer:

PBS with 0.02% sodium azide and 50% glycerol, pH7.3

Aliquoting is unnecessary for -20°C storage

For technical support and original validation data for this product please contact:

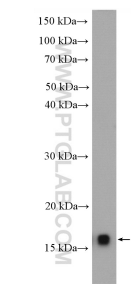
T: 4006900926

E: Proteintech-CN@ptglab.com

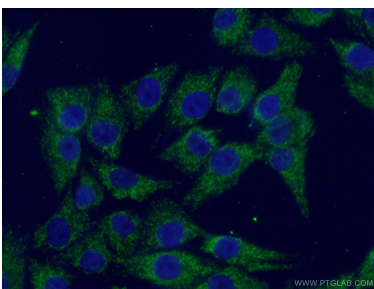
W: ptgcn.com

This product is exclusively available under Proteintech Group brand and is not available to purchase from any other manufacturer.

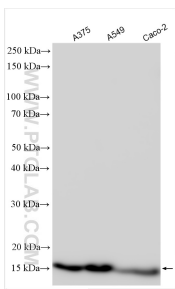
Selected Validation Data



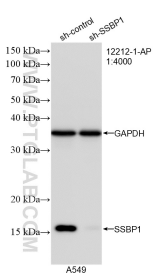
A549 cells were subjected to SDS PAGE followed by western blot with 12212-1-AP (SSBP1 antibody) at dilution of 1:600 incubated at 4 degree celsius over night.



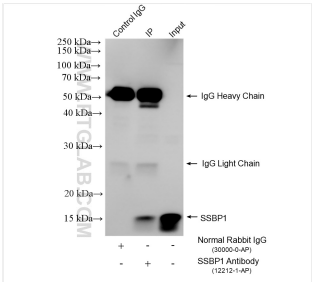
Immunofluorescent analysis of (4% PFA) fixed A375 cells using 12212-1-AP (SSBP1 antibody) at dilution of 1:50 and Alexa Fluor 488-conjugated AffiniPure Goat Anti-Rabbit IgG(H+L).



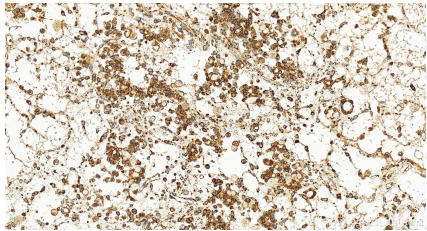
Various lysates were subjected to SDS PAGE followed by western blot with 12212-1-AP (SSBP1 antibody) at dilution of 1:4000 incubated at room temperature for 1.5 hours.



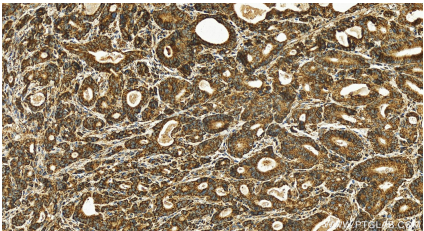
WB result of SSBP1 antibody (12212-1-AP; 1:4000; incubated at room temperature for 1.5 hours) with sh-Control and sh-SSBP1 transfected A549 cells.



IP result of anti-SSBP1 (IP:12212-1-AP, 4ug; Detection:12212-1-AP 1:4000) with A375 cells lysate 1440 ug.



Immunohistochemical analysis of paraffin-embedded human ovary cancer tissue slide using 12212-1-AP (SSBP1 antibody) at dilution of 1:100 (under 20x lens). Heat mediated antigen retrieval with Tris-EDTA buffer (pH 9.0).



Immunohistochemical analysis of paraffin-embedded human stomach cancer tissue slide using 12212-1-AP (SSBP1 antibody) at dilution of 1:100 (under 20x lens). Heat mediated antigen retrieval with Tris-EDTA buffer (pH 9.0).