

For Research Use Only

# 14-3-3 Epsilon Polyclonal antibody

Catalog Number: 11648-2-AP

Featured Product

22 Publications



## Basic Information

### Catalog Number:

11648-2-AP

### Concentration:

400 ug/ml

### Source:

Rabbit

### Isotype:

IgG

### Immunogen Catalog Number:

AG2247

### GenBank Accession Number:

BC000179

### GeneID (NCBI):

7531

### UNIPROT ID:

P62258

### Full Name:

tyrosine 3-monooxygenase/tryptophan 5-monooxygenase activation protein, epsilon polypeptide

### Calculated MW:

255 aa, 29 kDa

### Observed MW:

29-32 kDa

### Purification Method:

Antigen affinity purification

### Recommended Dilutions:

WB: 1:500-1:5000

IP: 0.5-4.0 ug for 1.0-3.0 mg of total protein lysate

IHC: 1:300-1:1200

IF/ICC: 1:50-1:500

## Applications

### Tested Applications:

WB, IHC, IF/ICC, IP, ELISA

### Cited Applications:

WB, IF, IP

### Species Specificity:

human, mouse, rat

### Cited Species:

human, mouse, rat, pig, canine

### Positive Controls:

WB: A375 cells, HeLa cells

IP: A375 cells,

IHC: human colon tissue, human gliomas tissue, human lung cancer tissue, mouse brain tissue

IF/ICC: HepG2 cells,

**Note-IHC: suggested antigen retrieval with TE buffer pH 9.0; (\*) Alternatively, antigen retrieval may be performed with citrate buffer pH 6.0**

## Background Information

14-3-3 Epsilon (also known as YWHA E) is a member of 14-3-3 proteins which were the first phosphoserine/phosphothreonine-binding proteins to be discovered. 14-3-3 family members interact with a wide spectrum of proteins and possess diverse functions. Mammals express seven distinct 14-3-3 isoforms (gamma, epsilon, beta, zeta, sigma, theta, tau) that form multiple homo- and hetero- dimmers. 14-3-3 proteins display the highest expression levels in the brain, and have been implicated in several neurodegenerative diseases, including Alzheimer's disease and amyotrophic lateral sclerosis. This antibody was raised against full-length 14-3-3 Epsilon.

## Notable Publications

Author	Pubmed ID	Journal	Application
Nerea Ugidos	31620119	Front Immunol	WB, IF
Kun Lu	29285195	Oncol Lett	WB, IF
Xing Fang	33244453	Front Oncol	WB

## Storage

### Storage:

Store at -20°C. Stable for one year after shipment.

### Storage Buffer:

PBS with 0.02% sodium azide and 50% glycerol, pH7.3

Aliquoting is unnecessary for -20°C storage

For technical support and original validation data for this product please contact:

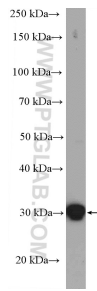
T: 4006900926

E: [Proteintech-CN@ptglab.com](mailto:Proteintech-CN@ptglab.com)

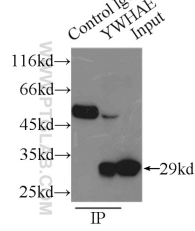
W: [ptgcn.com](http://ptgcn.com)

**This product is exclusively available under Proteintech Group brand and is not available to purchase from any other manufacturer.**

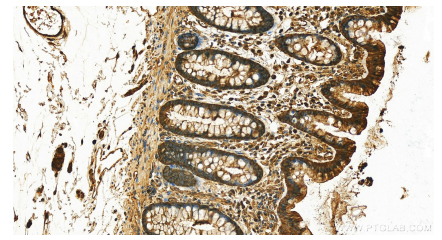
## Selected Validation Data



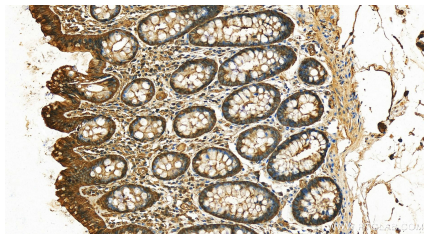
A375 cells were subjected to SDS PAGE followed by western blot with 11648-2-AP (14-3-3 epsilon antibody at dilution of 1:3000 incubated at room temperature for 1.5 hours.



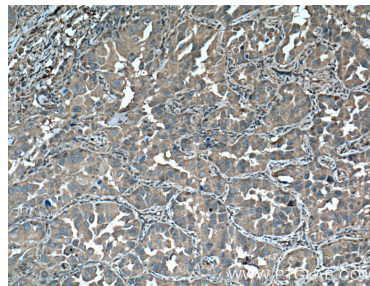
IP result of anti-14-3-3 Epsilon (IP:11648-2-AP, 3ug; Detection:11648-2-AP 1:1000) with A375 cells lysate 6000ug.



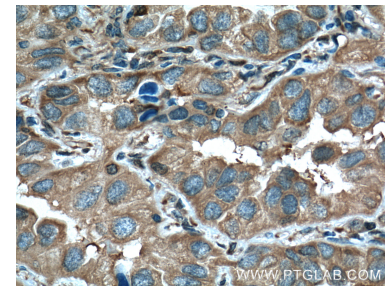
Immunohistochemical analysis of paraffin-embedded human colon tissue slide using 11648-2-AP (14-3-3 Epsilon antibody) at dilution of 1:600 (under 20x lens). Heat mediated antigen retrieval with Tris-EDTA buffer (pH 9.0).



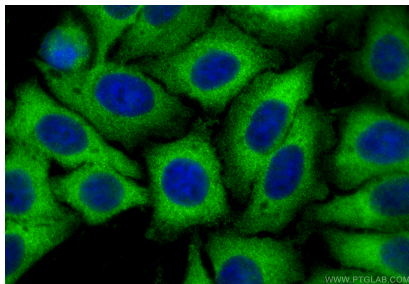
Immunohistochemical analysis of paraffin-embedded human colon tissue slide using 11648-2-AP (14-3-3 Epsilon antibody) at dilution of 1:600 (under 20x lens). Heat mediated antigen retrieval with Tris-EDTA buffer (pH 9.0).



Immunohistochemical analysis of paraffin-embedded human lung cancer tissue slide using 11648-2-AP (14-3-3 epsilon antibody at dilution of 1:200 (under 10x lens). Heat mediated antigen retrieval with Tris-EDTA buffer (pH 9.0).



Immunohistochemical analysis of paraffin-embedded human lung cancer tissue slide using 11648-2-AP (14-3-3 epsilon antibody at dilution of 1:200 (under 40x lens). Heat mediated antigen retrieval with Tris-EDTA buffer (pH 9.0).



Immunofluorescent analysis of (-20°C Ethanol) fixed HepG2 cells using 14-3-3 Epsilon antibody (11648-2-AP) at dilution of 1:200 and CoraLite®488-Conjugated Goat Anti-Rabbit IgG(H+L) (SA00013-2).