

For Research Use Only

# GOLGA2/GM130 Polyclonal antibody

Catalog Number: 11308-1-AP

Featured Product

155 Publications



## Basic Information

### Catalog Number:

11308-1-AP

### Concentration:

600 ug/ml

### Source:

Rabbit

### Isotype:

IgG

### Immunogen Catalog Number:

AG1848

### GenBank Accession Number:

BC014188

### GeneID (NCBI):

2801

### UNIPROT ID:

Q08379

### Full Name:

golgi autoantigen, golgin subfamily a, 2

### Calculated MW:

111 kDa

### Observed MW:

130 kDa

### Purification Method:

Antigen affinity purification

### Recommended Dilutions:

WB: 1:5000-1:50000

IHC: 1:50-1:500

IF/ICC: 1:200-1:800

FC (Intra): 0.20 ug per 10<sup>6</sup> cells in a 100 µl suspension

## Applications

### Tested Applications:

WB, IHC, IF/ICC, FC (Intra), ELISA

### Cited Applications:

WB, IHC, IF, IP

### Species Specificity:

human, canine

### Cited Species:

human, monkey, zebrafish, hamster

**Note-IHC: suggested antigen retrieval with TE buffer pH 9.0; (\*) Alternatively, antigen retrieval may be performed with citrate buffer pH 6.0**

### Positive Controls:

WB: A549 cells, HeLa cells, human spleen tissue, HEK-293 cells, MCF-7 cells

IHC: human testis tissue,

IF/ICC: HepG2 cells, MDCK cells, HEK-293 cells, HeLa cells

FC (Intra): HepG2 cells,

## Background Information

GOLGA2, also known as GM130, is a 130 kDa cis-Golgi matrix protein which is one component of the detergent and salt resistant Golgi matrix. It is a peripheral membrane protein highly bound to Golgi membrane and localized mainly at the cytoplasmic face of cis-Golgi membrane. Together with its interacting partner proteins, including p115, giantin, GRASP65, and Rab GTPase, GOLGA2/GM130 is involved in the regulation of ER-to-Golgi transport and also in the maintenance of the Golgi structure. Emerging evidence suggest that the GOLGA2/GM130 has potential roles in the control of glycosylation, cell cycle progression, and higher order cell functions such as cell polarization and directed cell migration. (PMID: 20197635)

## Notable Publications

Author	Pubmed ID	Journal	Application
Emmanuelle Steib	36313808	Cell Rep Methods	IF
Zhaoyue Meng	36175399	Nat Commun	IHC
Ying Zhou	36213325	J Immunol Res	IF

## Storage

### Storage:

Store at -20°C. Stable for one year after shipment.

### Storage Buffer:

PBS with 0.02% sodium azide and 50% glycerol, pH7.3

Aliquoting is unnecessary for -20°C storage

For technical support and original validation data for this product please contact:

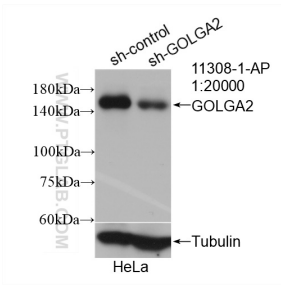
T: 4006900926

E: Proteintech-CN@ptglab.com

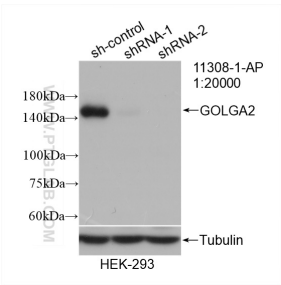
W: ptgcn.com

**This product is exclusively available under Proteintech Group brand and is not available to purchase from any other manufacturer.**

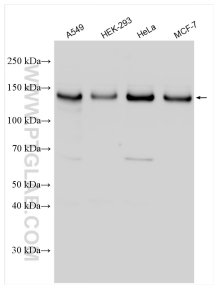
Selected Validation Data



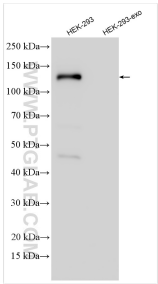
WB result of GOLGA2/GM130 antibody (11308-1-AP; 1:20000; incubated at room temperature for 1.5 hours) with sh-Control and sh-GOLGA2/GM130 transfected HeLa cells.



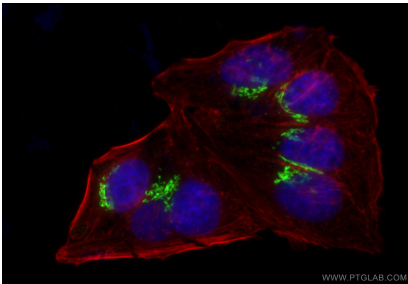
WB result of GOLGA2/GM130 antibody (11308-1-AP; 1:20000; incubated at room temperature for 1.5 hours) with sh-Control and sh-GOLGA2/GM130 transfected HEK-293 cells.



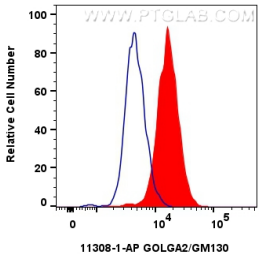
Various lysates were subjected to SDS PAGE followed by western blot with 11308-1-AP (GOLGA2/GM130 antibody) at dilution of 1:15000 incubated at room temperature for 1.5 hours.



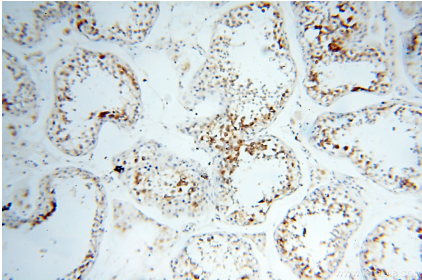
HEK-293 cells and HEK-293-derived exosomes (HEK-293-exo) were subjected to SDS PAGE followed by western blot with 11308-1-AP (GOLGA2/GM130 antibody) at dilution of 1:10000 incubated at room temperature for 1.5 hours.



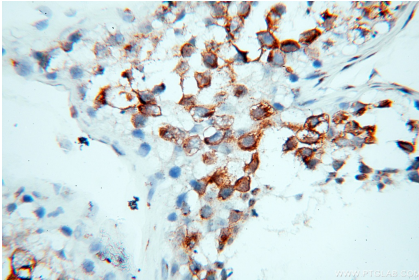
Immunofluorescent analysis of (4% PFA) fixed HepG2 cells using GOLGA2/GM130 antibody (11308-1-AP) at dilution of 1:400 and Multi-rAb Coralite® Plus 488-Goat Anti-Rabbit Recombinant Secondary Antibody (H+L) (RGAR002), CL594-Phalloidin (red).



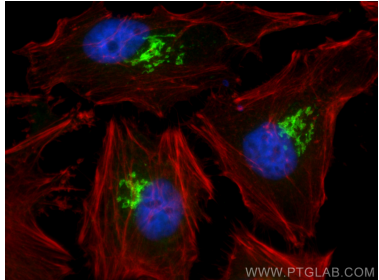
1x10<sup>6</sup> HepG2 cells were intracellularly stained with 0.2 ug GOLGA2/GM130 Polyclonal antibody (11308-1-AP) and Coralite®488-Conjugated AffiniPure Goat Anti-Rabbit IgG(H+L) (SA00013-2) (red), or 0.2 ug Rabbit IgG control Rabbit PolyAb (30000-0-AP) (blue). Cells were fixed with 4% PFA and permeabilized with Flow Cytometry Perm Buffer (PF00011-C).



Immunohistochemical analysis of paraffin-embedded human testis using 11308-1-AP (GOLGA2,GM130 antibody) at dilution of 1:100 (under 10x lens).



Immunohistochemical analysis of paraffin-embedded human testis using 11308-1-AP (GOLGA2,GM130 antibody) at dilution of 1:100 (under 40x lens).



Immunofluorescent analysis of (4% PFA) fixed HeLa cells using GOLGA2/GM130 antibody (11308-1-AP) at dilution of 1:400 and Coralite®488-Conjugated Goat Anti-Rabbit IgG(H+L) (SA00013-2), CL594-phalloidin (red).