

For Research Use Only

# NELL2 Polyclonal antibody

Catalog Number: 11268-1-AP

10 Publications



## Basic Information

Catalog Number:

11268-1-AP

Concentration:

900 µg/ml

Source:

Rabbit

Isotype:

IgG

Immunogen Catalog Number:

AG1793

GenBank Accession Number:

BC020544

GeneID (NCBI):

4753

UNIPROT ID:

Q99435

Full Name:

NEL-like 2 (chicken)

Calculated MW:

91 kDa

Observed MW:

100-110 kDa

Purification Method:

Antigen affinity purification

Recommended Dilutions:

WB: 1:500-1:2000

## Applications

Tested Applications:

WB, ELISA

Cited Applications:

WB, IHC, IF

Species Specificity:

human

Cited Species:

human, mouse

Positive Controls:

WB : fetal human brain tissue,

## Background Information

### Notable Publications

Author	Pubmed ID	Journal	Application
Hongpan Zhang	33869274	Front Mol Biosci	IHC, WB
Xiaobo Zheng	35221332	Signal Transduct Target Ther	
Fangkun Liu	30599272	Neuroscience	IF

## Storage

Storage:

Store at -20°C. Stable for one year after shipment.

Storage Buffer:

PBS with 0.02% sodium azide and 50% glycerol, pH7.3

Aliquoting is unnecessary for -20°C storage

For technical support and original validation data for this product please contact:

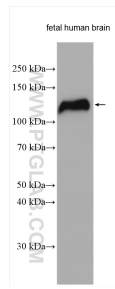
T: 4006900926

E: Proteintech-CN@ptglab.com

W: ptgcn.com

This product is exclusively available under Proteintech Group brand and is not available to purchase from any other manufacturer.

## Selected Validation Data



fetal human brain tissue were subjected to SDS PAGE followed by western blot with 11268-1-AP (NELL2 antibody) at dilution of 1:1000 incubated at room temperature for 1.5 hours.