

For Research Use Only

# IGFBP2 Polyclonal antibody

Catalog Number: 11065-3-AP

Featured Product

18 Publications



## Basic Information

**Catalog Number:**

11065-3-AP

**Concentration:**

650 ug/ml

**Source:**

Rabbit

**Isotype:**

IgG

**Immunogen Catalog Number:**

AG1535

**GenBank Accession Number:**

BC009902

**GeneID (NCBI):**

3485

**UNIPROT ID:**

P18065

**Full Name:**

IGF binding protein 2

**Calculated MW:**

35 kDa

**Observed MW:**

33-36 kDa

**Purification Method:**

Antigen affinity purification

**Recommended Dilutions:**

WB: 1:500-1:2000

IP: 0.5-4.0 ug for 1.0-3.0 mg of total protein lysate

IHC: 1:50-1:500

## Applications

**Tested Applications:**

WB, IHC, IP, ELISA

**Cited Applications:**

WB, IHC, IF

**Species Specificity:**

human

**Cited Species:**

human, mouse, chicken

**Note-IHC:** suggested antigen retrieval with **TE buffer pH 9.0; (\*) Alternatively, antigen retrieval may be performed with citrate buffer pH 6.0**

**Positive Controls:**

WB : SH-SY5Y cells,

IP : SH-SY5Y cells,

IHC : human pancreas cancer tissue,

## Background Information

INS-like growth factors (IGFs) and their binding proteins (IGFBPs) have important metabolic roles in the human body. IGFBP-2 is a 34 kD IGFBP protein with degraded fragments of 24 kD, 19kd and 15kd. The levels of IGFBP2 are elevated during progression of many human cancers.

## Notable Publications

Author	Pubmed ID	Journal	Application
Jing Wang	34547256	Exp Cell Res	WB
Xiaochao Tan	32931483	J Clin Invest	WB
Hyunho Kim	25405894	Nat Commun	WB

## Storage

**Storage:**

Store at -20°C. Stable for one year after shipment.

**Storage Buffer:**

PBS with 0.02% sodium azide and 50% glycerol, pH7.3

Aliquoting is unnecessary for -20°C storage

For technical support and original validation data for this product please contact:

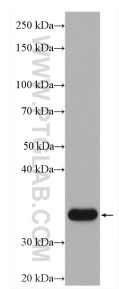
T: 4006900926

E: [Proteintech-CN@ptglab.com](mailto:Proteintech-CN@ptglab.com)

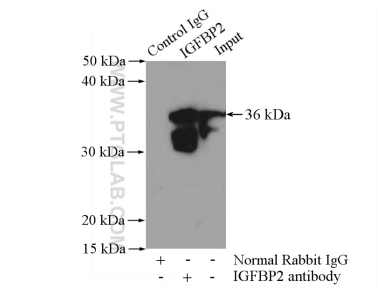
W: [ptgcn.com](http://ptgcn.com)

This product is exclusively available under Proteintech Group brand and is not available to purchase from any other manufacturer.

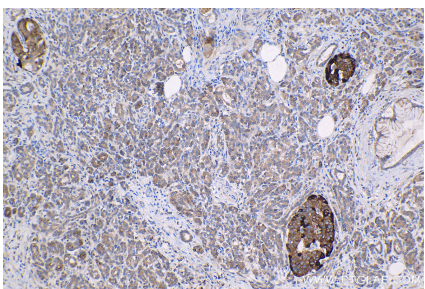
Selected Validation Data



SH-SY5Y cells were subjected to SDS PAGE followed by western blot with 11065-3-AP (IGFBP2 antibody) at dilution of 1:1000 incubated at room temperature for 1.5 hours.



IP result of anti-IGFBP2 (IP:11065-3-AP, 4ug; Detection:11065-3-AP 1:300) with SH-SY5Y cells lysate 1200ug.



Immunohistochemical analysis of paraffin-embedded human pancreas cancer tissue slide using 11065-3-AP (IGFBP2 antibody) at dilution of 1:200 (under 10x lens). Heat mediated antigen retrieval with Tris-EDTA buffer (pH 9.0).