

For Research Use Only

Cathepsin L Polyclonal antibody

Catalog Number: 10938-1-AP

Featured Product

13 Publications



Basic Information

Catalog Number:

10938-1-AP

Concentration:

147 µg/ml

Source:

Rabbit

Isotype:

IgG

Immunogen Catalog Number:

AG1373

GenBank Accession Number:

BC012612

GeneID (NCBI):

1514

UNIPROT ID:

P07711

Full Name:

cathepsin L1

Calculated MW:

38 kDa

Observed MW:

36-39 kDa, 29 kDa

Purification Method:

Antigen affinity purification

Recommended Dilutions:

WB: 1:200-1:1000

IHC: 1:50-1:500

IF/ICC: 1:50-1:500

Applications

Tested Applications:

WB, IF, IHC, ELISA

Cited Applications:

WB, IHC, IF

Species Specificity:

human

Cited Species:

human, rat

Note-IHC: suggested antigen retrieval with TE buffer pH 9.0; (*) Alternatively, antigen retrieval may be performed with citrate buffer pH 6.0

Positive Controls:

WB: A549 cells,

IHC: human skin tissue,

IF/ICC: HepG2 cells,

Background Information

CTSL1(Cathepsin L1) is also named as CTSL and MEP, belongs to the peptidase C1 family. It is a lysosomal proteinase whose expression is also up-regulated in the skeletal muscle during starvation(PMID:20088826). It plays an intracellular role in normal intestinal epithelial polarization and initiation of neoplasia(PMID:17622569). CTSL1 also improves cardiac function and inhibits cardiac hypertrophy, inflammation, and fibrosis through blocking AKT/GSK3B signaling(PMID:19096818). The full length protein is 38 kDa with a signal peptide, two propeptide and a glycosylation site. It has been detected the 36 kDa, 39 kDa, 29 kDa and 21 kDa in rat gastrocnemius muscle. These forms of cathepsin L could either be attributed to differences in glycosylation or to partial processing of the proenzyme. (PMID:11696001)

Notable Publications

Author	Pubmed ID	Journal	Application
Jana Ihlow	34479499	BMC Infect Dis	IHC
Peng Liu	31632196	Cancer Cell Int	WB
Qiang Dong	34807310	J Cancer Res Clin Oncol	WB

Storage

Storage:

Store at -20°C. Stable for one year after shipment.

Storage Buffer:

PBS with 0.02% sodium azide and 50% glycerol, pH7.3

Aliquoting is unnecessary for -20°C storage

For technical support and original validation data for this product please contact:

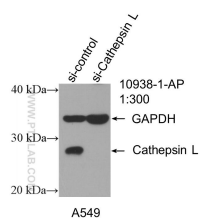
T: 4006900926

E: Proteintech-CN@ptglab.com

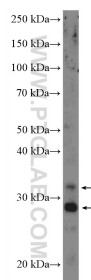
W: ptgcn.com

This product is exclusively available under Proteintech Group brand and is not available to purchase from any other manufacturer.

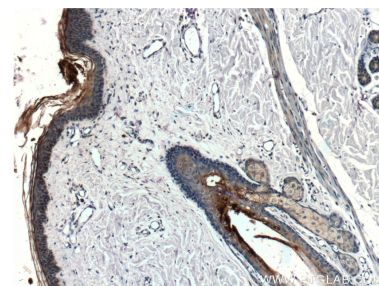
Selected Validation Data



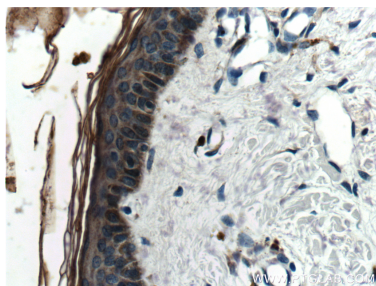
WB result of Cathepsin L antibody (10938-1-AP; 1:300; incubated at room temperature for 1.5 hours) with sh-Control and sh-Cathepsin L transfected A549 cells.



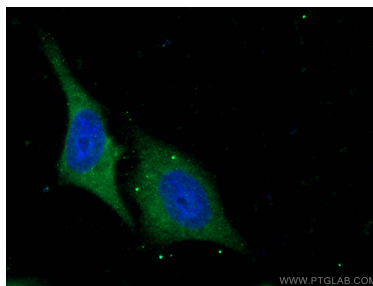
A549 cells were subjected to SDS PAGE followed by western blot with 10938-1-AP (Cathepsin L Antibody) at dilution of 1:300 incubated at room temperature for 1.5 hours.



Immunohistochemical analysis of paraffin-embedded human skin tissue slide using 10938-1-AP (Cathepsin L Antibody) at dilution of 1:200 (under 10x lens).



Immunohistochemical analysis of paraffin-embedded human skin tissue slide using 10938-1-AP (Cathepsin L Antibody) at dilution of 1:200 (under 40x lens).



Immunofluorescent analysis of (-20°C Ethanol) fixed HepG2 cells using 10938-1-AP (Cathepsin L antibody), at dilution of 1:100 and CoraLite®488-Conjugated Goat Anti-Rabbit IgG(H+L).