

For Research Use Only

# KIRREL2 Polyclonal antibody

Catalog Number: 10890-1-AP

3 Publications



## Basic Information

Catalog Number:

10890-1-AP

Concentration:

700 ug/ml

Source:

Rabbit

Isotype:

IgG

Immunogen Catalog Number:

AG1036

GenBank Accession Number:

BC007312

GeneID (NCBI):

84063

UNIPROT ID:

Q6UWL6

Full Name:

kin of IRRE like 2 (Drosophila)

Calculated MW:

75 kDa

Observed MW:

67 kDa, 90 kDa

Purification Method:

Antigen affinity purification

Recommended Dilutions:

WB: 1:200-1:1000

## Applications

Tested Applications:

WB, ELISA

Cited Applications:

IF

Species Specificity:

human, mouse, rat

Cited Species:

human

Positive Controls:

WB : mouse liver tissue,

## Background Information

### Notable Publications

| Author            | Pubmed ID | Journal        | Application |
|-------------------|-----------|----------------|-------------|
| Alexander Atamian | 39623220  | Nat Protoc     | IF          |
| Alexander Atamian | 38181749  | Cell Stem Cell | IF          |
| Guoxu Song        | 39872157  | Life Med       | IF          |

## Storage

Storage:

Store at -20°C. Stable for one year after shipment.

Storage Buffer:

PBS with 0.02% sodium azide and 50% glycerol, pH7.3

Aliquoting is unnecessary for -20°C storage

For technical support and original validation data for this product please contact:

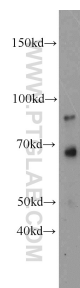
T: 4006900926

E: [Proteintech-CN@ptglab.com](mailto:Proteintech-CN@ptglab.com)

W: [ptgcn.com](http://ptgcn.com)

This product is exclusively available under Proteintech Group brand and is not available to purchase from any other manufacturer.

## Selected Validation Data



mouse liver tissue were subjected to SDS PAGE followed by western blot with 10890-1-AP (KIRREL2 antibody) at dilution of 1:300 incubated at room temperature for 1.5 hours.