

For Research Use Only

# TPT1 Polyclonal antibody

Catalog Number: 10824-1-AP

Featured Product

8 Publications



## Basic Information

Catalog Number:

10824-1-AP

Concentration:

600 ug/ml

Source:

Rabbit

Isotype:

IgG

Immunogen Catalog Number:

AG1268

GenBank Accession Number:

BC003352

GeneID (NCBI):

7178

UNIPROT ID:

P13693

Full Name:

tumor protein, translationally-controlled 1

Calculated MW:

20 kDa

Observed MW:

22-25 kDa

Purification Method:

Antigen affinity purification

Recommended Dilutions:

WB: 1:1000-1:8000

IHC: 1:1000-1:4000

IF/ICC: 1:200-1:800

## Applications

Tested Applications:

WB, IHC, IF/ICC, ELISA

Cited Applications:

WB, IHC, IF

Species Specificity:

human, mouse, rat

Cited Species:

human, mouse, rat, pig

**Note-IHC: suggested antigen retrieval with TE buffer pH 9.0; (\*) Alternatively, antigen retrieval may be performed with citrate buffer pH 6.0**

Positive Controls:

WB: A431 cells, mouse placenta tissue, MCF-7 cells

IHC: human colon cancer tissue,

IF/ICC: HeLa cells,

## Background Information

The translationally controlled tumor protein (TPT1, also known as TCTP) is a highly conserved, abundantly expressed protein associated with cell growth and apoptosis regulation. It is overexpressed in most tumor cells and its down-regulation decreases the viability of those cells. This antibody detected 22-25 kDa TPT1 in lysates. An additional band around 50 kDa can also be observed occasionally, possibly representing the dimer form of TPT1.

## Notable Publications

| Author          | Pubmed ID | Journal            | Application |
|-----------------|-----------|--------------------|-------------|
| Nicolas Fischer | 33259807  | Chem Biol Interact | WB          |
| Dongrong Zhu    | 33667688  | Pharmacol Res      | WB          |
| Staflin Karin K | 19558675  | BMC Cancer         | WB,IHC      |

## Storage

Storage:

Store at -20°C. Stable for one year after shipment.

Storage Buffer:

PBS with 0.02% sodium azide and 50% glycerol, pH7.3

Aliquoting is unnecessary for -20°C storage

For technical support and original validation data for this product please contact:

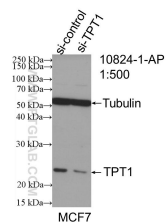
T: 4006900926

E: [Proteintech-CN@ptglab.com](mailto:Proteintech-CN@ptglab.com)

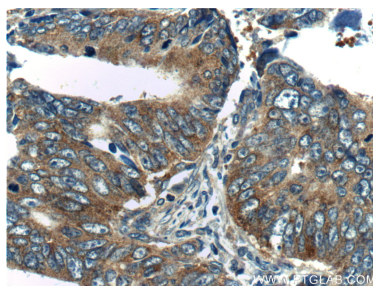
W: [ptgcn.com](http://ptgcn.com)

**This product is exclusively available under Proteintech Group brand and is not available to purchase from any other manufacturer.**

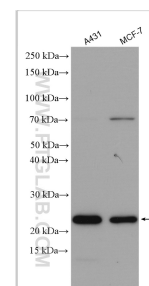
## Selected Validation Data



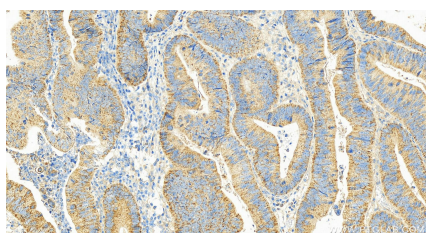
WB result of TPT1 antibody (10824-1-AP; 1:500; incubated at room temperature for 1.5 hours) with sh-Control and sh-TPT1 transfected MCF-7 cells.



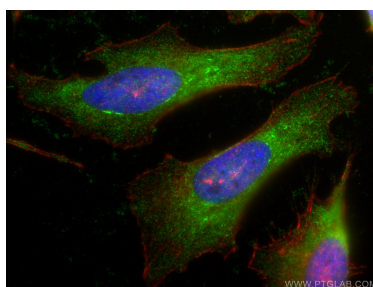
Immunohistochemical analysis of paraffin-embedded human colon cancer tissue slide using 10824-1-AP (TPT1 Antibody) at dilution of 1:200 (under 40x lens).



Various lysates were subjected to SDS PAGE followed by western blot with 10824-1-AP (TPT1 antibody) at dilution of 1:4000 incubated at room temperature for 1.5 hours.



Immunohistochemical analysis of paraffin-embedded human colon cancer tissue slide using 10824-1-AP (TPT1 antibody) at dilution of 1:2000 (under 20x lens). Heat mediated antigen retrieval with Tris-EDTA buffer (pH 9.0).



Immunofluorescent analysis of (-20°C Ethanol) fixed HeLa cells using TPT1 antibody (10824-1-AP) at dilution of 1:400 and CoraLite®488-Conjugated AffiniPure Goat Anti-Rabbit IgG(H+L), CL594-Phalloidin (red).