

For Research Use Only

RFC4 Polyclonal antibody

Catalog Number: 10806-1-AP

3 Publications



Basic Information

Catalog Number:

10806-1-AP

Concentration:

500 ug/ml

Source:

Rabbit

Isotype:

IgG

Immunogen Catalog Number:

AG1234

GenBank Accession Number:

BC017452

GeneID (NCBI):

5984

UNIPROT ID:

P35249

Full Name:

replication factor C (activator 1) 4,

37kDa

Calculated MW:

37 kDa

Observed MW:

37-40 kDa

Purification Method:

Antigen affinity purification

Recommended Dilutions:

WB: 1:5000-1:50000

IHC: 1:1000-1:4000

IF/ICC: 1:50-1:500

FC (Intra): 0.25 ug per 10⁶ cells in a 100 µl suspension

Applications

Tested Applications:

WB, IHC, IF/ICC, FC (Intra), ELISA

Cited Applications:

WB

Species Specificity:

human

Cited Species:

human, mouse

Note-IHC: suggested antigen retrieval with TE buffer pH 9.0; (*) Alternatively, antigen retrieval may be performed with citrate buffer pH 6.0

Positive Controls:

WB : MCF-7 cells, LNCaP cells, Raji cells

IHC : human skin cancer tissue,

IF/ICC : U2OS cells, HepG2 cells

FC (Intra) : HepG2 cells,

Background Information

Notable Publications

Author	Pubmed ID	Journal	Application
Jing Wang	34520390	Aging (Albany NY)	WB
Jianguo Yang	33691114	Cell Rep	WB
Stephen Gray	32640224	Cell Rep	WB

Storage

Storage:

Store at -20°C. Stable for one year after shipment.

Storage Buffer:

PBS with 0.02% sodium azide and 50% glycerol, pH7.3

Aliquoting is unnecessary for -20°C storage

For technical support and original validation data for this product please contact:

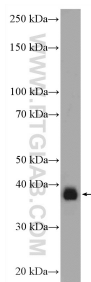
T: 4006900926

E: Proteintech-CN@ptglab.com

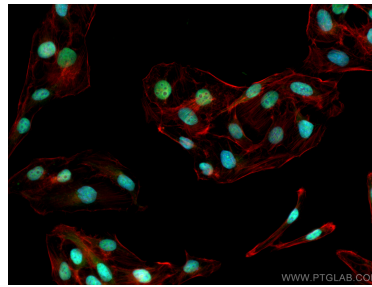
W: ptgcn.com

This product is exclusively available under Proteintech Group brand and is not available to purchase from any other manufacturer.

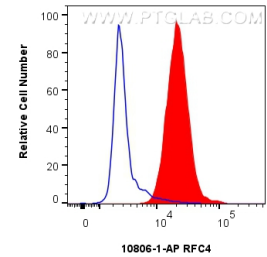
Selected Validation Data



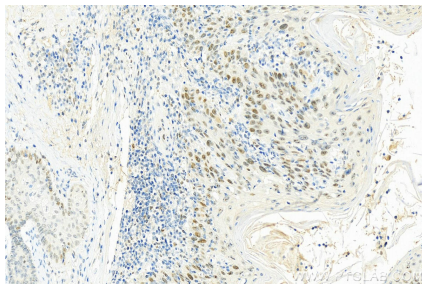
MCF-7 cells were subjected to SDS PAGE followed by western blot with 10806-1-AP (RFC4 antibody) at dilution of 1:10000 incubated at room temperature for 1.5 hours.



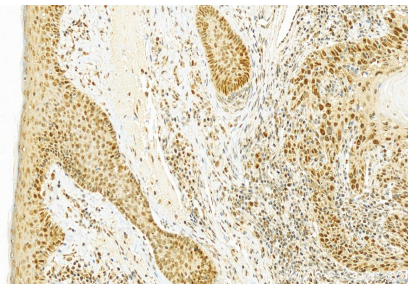
Immunofluorescent analysis of (4% PFA) fixed U2OS cells using RFC4 antibody (10806-1-AP) at dilution of 1:200 and CoraLite®488-Conjugated AffiniPure Goat Anti-Rabbit IgG(H+L), CL594-Phalloidin (red).



1x10⁶ HepG2 cells were intracellularly stained with 0.25 ug RFC4 Polyclonal antibody (10806-1-AP) and CoraLite®488-Conjugated Goat Anti-Rabbit IgG(H+L) (SA00013-2)(red), or 0.25 ug Rabbit IgG control Rabbit PolyAb (30000-0-AP) (blue). Cells were fixed and permeabilized with Transcription Factor Staining Buffer Kit (PF00011).



Immunohistochemical analysis of paraffin-embedded skin cancer slide using 10806-1-AP (RFC4 antibody) at dilution of 1:2000 (under 20x lens). Heat mediated antigen retrieval with Tris-EDTA buffer (pH 9.0).



Immunohistochemical analysis of paraffin-embedded skin cancer slide using 10806-1-AP (RFC4 antibody) at dilution of 1:2000 (under 20x lens). Heat mediated antigen retrieval with Tris-EDTA buffer (pH 9.0).