

For Research Use Only

MSI2 Polyclonal antibody

Catalog Number: 10770-1-AP

9 Publications



Basic Information

Catalog Number:

10770-1-AP

Concentration:

450 ug/ml

Source:

Rabbit

Isotype:

IgG

Immunogen Catalog Number:

AG1213

GenBank Accession Number:

BC001526

GeneID (NCBI):

124540

UNIPROT ID:

Q96DH6

Full Name:

musashi homolog 2 (Drosophila)

Calculated MW:

35 kDa

Observed MW:

37-40 kDa

Purification Method:

Antigen affinity purification

Recommended Dilutions:

WB: 1:1000-1:8000

IP: 0.5-4.0 ug for 1.0-3.0 mg of total protein lysate

IHC: 1:500-1:2000

Applications

Tested Applications:

WB, IHC, IP, ELISA

Cited Applications:

WB, IHC, IF, IP, RIP

Species Specificity:

human, mouse, rat

Cited Species:

human, mouse

Note-IHC: suggested antigen retrieval with TE buffer pH 9.0; (*) Alternatively, antigen retrieval may be performed with citrate buffer pH 6.0

Positive Controls:

WB : PC-12 cells, C6 cells, COLO 320 cells, MCF-7 cells

IP : MCF-7 cells,

IHC : human ovary tumor tissue, human colon cancer tissue, mouse liver tissue

Background Information

MSI2 is an RNA-binding protein that regulates the expression of target mRNAs at the translation level. It binds to RNA via 2 ribonucleoprotein-type RNA recognition motifs in their N-termini, to consensus motifs in mRNAs to inhibit transcription. It may play a role in the proliferation and maintenance of stem cells in the central nervous system. MSI2 can regulate normal hematopoiesis and promote aggressive myeloid leukemia

Notable Publications

Author	Pubmed ID	Journal	Application
Ling-Fei Zhang	26346275	EMBO J	WB
Zhiwei Li	29054489	Exp Cell Res	IHC
DiIshan H Beligala	31059735	Int J Dev Neurosci	

Storage

Storage:

Store at -20°C. Stable for one year after shipment.

Storage Buffer:

PBS with 0.02% sodium azide and 50% glycerol, pH7.3

Aliquoting is unnecessary for -20°C storage

For technical support and original validation data for this product please contact:

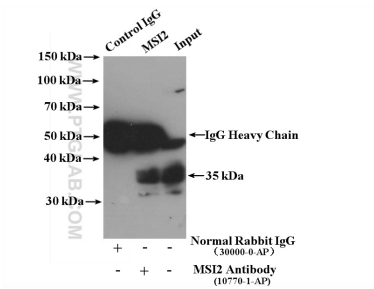
T: 4006900926

E: Proteintech-CN@ptglab.com

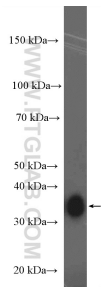
W: ptgcn.com

This product is exclusively available under Proteintech Group brand and is not available to purchase from any other manufacturer.

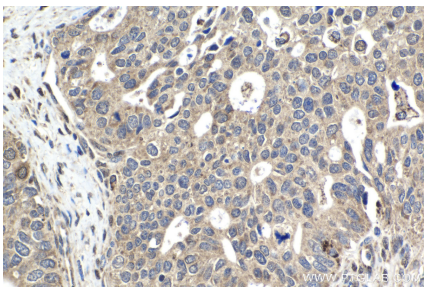
Selected Validation Data



MCF-7 cells were subjected to SDS PAGE followed by western blot with 10770-1-AP (MSI2 antibody) at dilution of 1:500.



PC-12 cells were subjected to SDS PAGE followed by western blot with 10770-1-AP (MSI2 antibody) at dilution of 1:4000 incubated at room temperature for 1.5 hours.



Immunohistochemical analysis of paraffin-embedded human ovary tumor tissue slide using 10770-1-AP (MSI2 antibody) at dilution of 1:1000 (under 40x lens). Heat mediated antigen retrieval with Tris-EDTA buffer (pH 9.0).