

## MRE11 Polyclonal antibody

Catalog Number: 10744-1-AP

14 Publications

## Basic Information

## Catalog Number:

10744-1-AP

## Concentration:

400 µg/ml

## Source:

Rabbit

## Isotype:

IgG

## Immunogen Catalog Number:

AG1105

## GenBank Accession Number:

BC005241

## GeneID (NCBI):

4361

## UNIPROT ID:

P49959

## Full Name:

MRE11 meiotic recombination 11 homolog A (S. cerevisiae)

## Calculated MW:

81 kDa

## Observed MW:

81 kDa

## Purification Method:

Antigen affinity purification

## Recommended Dilutions:

WB: 1:500-1:2000

IP: 0.5-4.0 µg for 1.0-3.0 mg of total protein lysate

IHC: 1:20-1:200

## Applications

## Tested Applications:

WB, IHC, IP, ELISA

## Cited Applications:

WB, IHC, IF, ChIP

## Species Specificity:

human, mouse, rat

## Cited Species:

human, mouse, rat

**Note-IHC: suggested antigen retrieval with TE buffer pH 9.0; (\*) Alternatively, antigen retrieval may be performed with citrate buffer pH 6.0**

## Positive Controls:

WB: HEK-293 cells, HT-1376 cells, HeLa cells, HepG2 cells

IP: HeLa cells,

IHC: human lymphoma tissue,

## Background Information

Mre11 (meiotic recombination 11), also named as Mre11A, is a component of the MRN (MRE11/RAD50/NBS1) complex which is a versatile complex, playing a key role in the sensing, processing, and repair of DSBs. MRE11 possesses both endonuclease and 3'-5' exonuclease activity. It contains two DNA-binding domains (DBDs), enabling it to bind both single-stranded DNA (ssDNA) and double-stranded DNA (dsDNA). After DSBs, MRE11 is loaded onto DSBs sites and cleaves DNA by cooperating with CtBP (CtBP [C terminal binding protein] interacting protein) to initiate end resection. It's reported that MRE11 is over-expressed in breast cancers. (PMID:38128537; 22914783)

## Notable Publications

Author	Pubmed ID	Journal	Application
Tao Zhang	36050397	Nat Commun	WB
C E Aiken	30791124	J Physiol	WB
Xin Zhang	35145081	Cell Death Dis	WB, IHC, ChIP

## Storage

## Storage:

Store at -20°C. Stable for one year after shipment.

## Storage Buffer:

PBS with 0.02% sodium azide and 50% glycerol, pH7.3

Aliquoting is unnecessary for -20°C storage

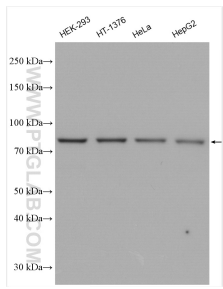
For technical support and original validation data for this product please contact:

T: 4006900926

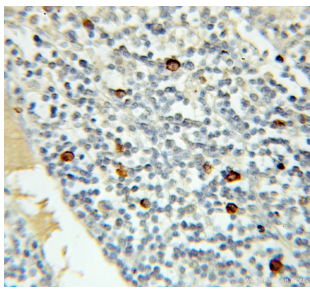
E: [Proteintech-CN@ptglab.com](mailto:Proteintech-CN@ptglab.com)W: [ptgcn.com](http://ptgcn.com)

**This product is exclusively available under Proteintech Group brand and is not available to purchase from any other manufacturer.**

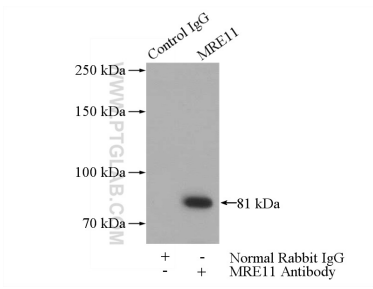
Selected Validation Data



Various lysates were subjected to SDS PAGE followed by western blot with 10744-1-AP (MRE11 antibody) at dilution of 1:1000 incubated at room temperature for 1.5 hours.



Immunohistochemical analysis of paraffin-embedded human lymphoma using 10744-1-AP (MRE11 antibody) at dilution of 1:50 (under 10x lens).



IP result of anti-MRE11 (IP:10744-1-AP, 4ug; Detection:10744-1-AP 1:600) with HeLa cells lysate 1200ug.