

For Research Use Only

# PCMT1 Polyclonal antibody

Catalog Number: 10519-1-AP

Featured Product

9 Publications



## Basic Information

Catalog Number:

10519-1-AP

Concentration:

350 ug/ml

Source:

Rabbit

Isotype:

IgG

Immunogen Catalog Number:

AG0811

GenBank Accession Number:

BC008748

GeneID (NCBI):

5110

UNIPROT ID:

P22061

Full Name:

protein-L-isoaspartate (D-aspartate)

O-methyltransferase

Calculated MW:

25 kDa

Observed MW:

25-28 kDa

Purification Method:

Antigen affinity purification

Recommended Dilutions:

WB: 1:500-1:2000

IHC: 1:20-1:200

IF/ICC: 1:50-1:500

## Applications

Tested Applications:

WB, IHC, IF/ICC, ELISA

Cited Applications:

WB, IHC

Species Specificity:

human, mouse, rat

Cited Species:

human, mouse

**Note-IHC: suggested antigen retrieval with TE buffer pH 9.0; (\*) Alternatively, antigen retrieval may be performed with citrate buffer pH 6.0**

Positive Controls:

WB : HeLa, HeLa cells, human testis tissue, HEK-293 cells, Raji cells, mouse testis tissue, rat testis tissue

IHC : human pancreas tissue,

IF/ICC : HEK-293 cells,

## Background Information

The PCMT1 gene encodes the protein repair enzyme protein-L-isoaspartate (D-aspartate) O-methyltransferase, which is known to protect certain neural cells against Bax-induced apoptosis.

## Notable Publications

Author	Pubmed ID	Journal	Application
Yan Guijun G	23647599	Int J Cardiol	WB
Melanie Föcking	21536977	Arch Gen Psychiatry	WB
Jingjing Zhang	35033172	J Exp Clin Cancer Res	WB

## Storage

Storage:

Store at -20°C. Stable for one year after shipment.

Storage Buffer:

PBS with 0.02% sodium azide and 50% glycerol, pH7.3

Aliquoting is unnecessary for -20°C storage

For technical support and original validation data for this product please contact:

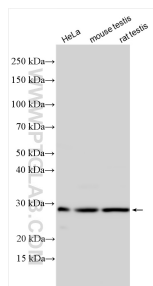
T: 4006900926

E: [Proteintech-CN@ptglab.com](mailto:Proteintech-CN@ptglab.com)

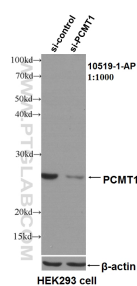
W: [ptgcn.com](http://ptgcn.com)

**This product is exclusively available under Proteintech Group brand and is not available to purchase from any other manufacturer.**

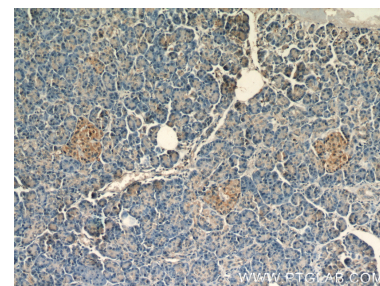
## Selected Validation Data



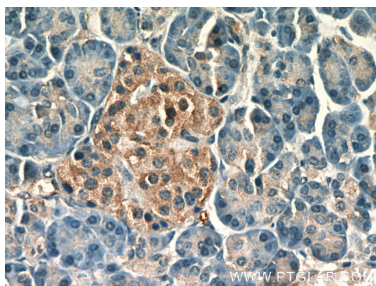
Various lysates were subjected to SDS PAGE followed by western blot with 10519-1-AP (PCMT1 antibody) at dilution of 1:15000 incubated at room temperature for 1.5 hours.



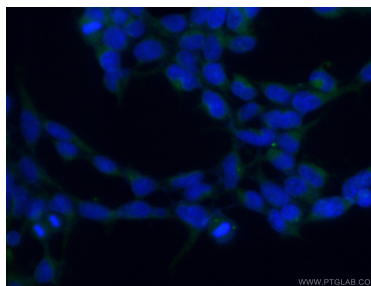
WB result of PCMT1 antibody (10519-1-AP, 1:1000) with si-Control and si-PCMT1 transfected HeLa cells.



Immunohistochemical analysis of paraffin-embedded human pancreas using 10519-1-AP (PCMT1 antibody) at dilution of 1:50 (under 10x lens).



Immunohistochemical analysis of paraffin-embedded human pancreas using 10519-1-AP (PCMT1 antibody) at dilution of 1:50 (under 40x lens).



Immunofluorescent analysis of (-20°C Ethanol) fixed HEK-293 cells using 10519-1-AP (PCMT1 antibody) at dilution of 1:50 and Alexa Fluor 488-conjugated AffiniPure Goat Anti-Rabbit IgG(H+L).