

For Research Use Only

S100A14 Polyclonal antibody

Catalog Number: 10489-1-AP

Featured Product

29 Publications



Basic Information

Catalog Number:

10489-1-AP

Concentration:

1000 ug/ml

Source:

Rabbit

Isotype:

IgG

Immunogen Catalog Number:

AG0757

GenBank Accession Number:

BC005019

GeneID (NCBI):

57402

UNIPROT ID:

Q9HCY8

Full Name:

S100 calcium binding protein A14

Calculated MW:

12 kDa

Observed MW:

10-12 kDa

Purification Method:

Antigen affinity purification

Recommended Dilutions:

WB: 1:500-1:2000

IP: 0.5-4.0 ug for 1.0-3.0 mg of total protein lysate

IHC: 1:500-1:2000

IF/ICC: 1:200-1:800

Applications

Tested Applications:

WB, IHC, IF/ICC, IP, ELISA

Cited Applications:

WB, IHC, IF, IP, CoIP

Species Specificity:

human, rat

Cited Species:

human, mouse

Positive Controls:

WB : MCF-7 cells, rat stomach tissue

IP : MCF-7 cells,

IHC : human colon cancer tissue, human skin tissue, human ovary tumor tissue, human breast cancer tissue, human bowen disease, human ovary cancer tissue

IF/ICC : HeLa cells,

Note-IHC: suggested antigen retrieval with TE buffer pH 9.0; (*) Alternatively, antigen retrieval may be performed with citrate buffer pH 6.0

Background Information

The S100 family is a multifunctional group of EF-hand type calcium-binding proteins. S100A14 protein (previously known as BCMP84, S100A15) is a recently identified member of the S100 family. It is differentially expressed in a number of different human malignancies like ovary, breast, uterus, kidney, rectum and colon cancers, and esophageal and oral squamous cell carcinomas (OSCCs).

Notable Publications

Author	Pubmed ID	Journal	Application
Qingying Zhang	25266115	J Cancer Res Clin Oncol	WB, IHC
Sapkota Dipak D	24086685	PLoS One	WB, IHC, IP
Leth-Larsen Rikke R	22692575	Mol Med	IHC

Storage

Storage:

Store at -20°C. Stable for one year after shipment.

Storage Buffer:

PBS with 0.02% sodium azide and 50% glycerol, pH7.3

Aliquoting is unnecessary for -20°C storage

For technical support and original validation data for this product please contact:

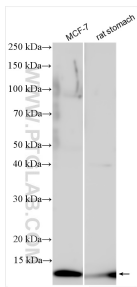
T: 4006900926

E: Proteintech-CN@ptglab.com

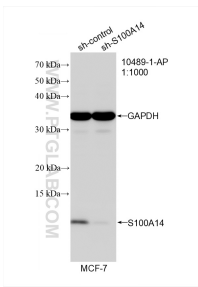
W: ptgcn.com

This product is exclusively available under Proteintech Group brand and is not available to purchase from any other manufacturer.

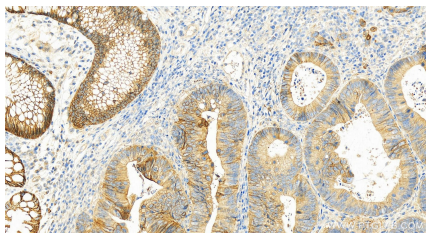
Selected Validation Data



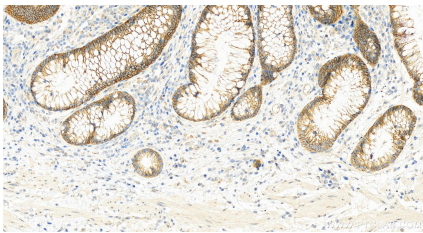
Various lysates were subjected to SDS PAGE followed by western blot with 10489-1-AP (S100A14 antibody) at dilution of 1:1000 incubated at room temperature for 1.5 hours.



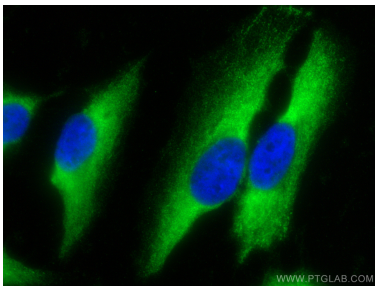
WB result of S100A14 antibody (10489-1-AP; 1:1000; incubated at room temperature for 1.5 hours) with sh-Control and sh-S100A14 transfected MCF-7 cells.



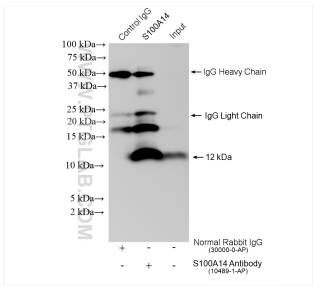
Immunohistochemical analysis of paraffin-embedded human colon cancer tissue slide using 10489-1-AP (S100A14 antibody) at dilution of 1:1000 (under 20x lens). Heat mediated antigen retrieval with Tris-EDTA buffer (pH 9.0).



Immunohistochemical analysis of paraffin-embedded human colon cancer tissue slide using 10489-1-AP (S100A14 antibody) at dilution of 1:1000 (under 20x lens). Heat mediated antigen retrieval with Tris-EDTA buffer (pH 9.0).



Immunofluorescent analysis of (-20°C Ethanol) fixed HeLa cells using S100A14 antibody (10489-1-AP) at dilution of 1:400 and CoraLite® 488-Conjugated AffiniPure Goat Anti-Rabbit IgG(H+L).



IP result of anti-S100A14 (IP:10489-1-AP, 4ug; Detection:10489-1-AP 1:1000) with MCF-7 cells lysate 760 ug.