

## RPA2 Polyclonal antibody

Catalog Number: 10412-1-AP

22 Publications

## Basic Information

## Catalog Number:

10412-1-AP

## Concentration:

600 ug/ml

## Source:

Rabbit

## Isotype:

IgG

## Immunogen Catalog Number:

AG0690

## GenBank Accession Number:

BC001630

## GeneID (NCBI):

6118

## UNIPROT ID:

P15927

## Full Name:

replication protein A2, 32kDa

## Calculated MW:

29 kDa

## Observed MW:

32 kDa

## Purification Method:

Antigen affinity purification

## Recommended Dilutions:

WB: 1:1000-1:6000

IP: 0.5-4.0 ug for 1.0-3.0 mg of total protein lysate

IHC: 1:20-1:200

IF/ICC: 1:50-1:500

## Applications

## Tested Applications:

WB, IHC, IF/ICC, IP, ELISA

## Cited Applications:

WB, IHC, IF, IP, ChIP

## Species Specificity:

human, mouse, rat

## Cited Species:

human, mouse

**Note-IHC: suggested antigen retrieval with TE buffer pH 9.0; (\*) Alternatively, antigen retrieval may be performed with citrate buffer pH 6.0**

## Positive Controls:

WB: HEK-293 cells, mouse brain tissue, HeLa cells, SH-SY5Y cells

IP: mouse kidney tissue,

IHC: human gliomas tissue,

IF/ICC: A431 cells,

## Background Information

RPA2, a subunit of the heterotrimeric replication protein A (RPA) complex, is overexpressed in various cancers. RPA2 is a major target for upstream kinases, including CDKs and the three PIKKs (ATR, ataxia-telangiectasia mutated [ATM], and DNA-PK). RPA2 comprises multiple critical Ser/Tr residues that are phosphorylated in sequential order in response to genotoxic stress.

## Notable Publications

Author	Pubmed ID	Journal	Application
Tao Zhang	36050397	Nat Commun	WB
Jiao Zhao	35597237	Mol Cell	WB
Yushan Li	35341968	J Genet Genomics	IF

## Storage

## Storage:

Store at -20°C. Stable for one year after shipment.

## Storage Buffer:

PBS with 0.02% sodium azide and 50% glycerol, pH7.3

Aliquoting is unnecessary for -20°C storage

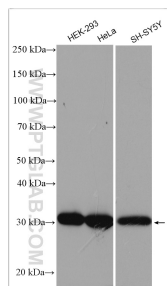
For technical support and original validation data for this product please contact:

T: 4006900926

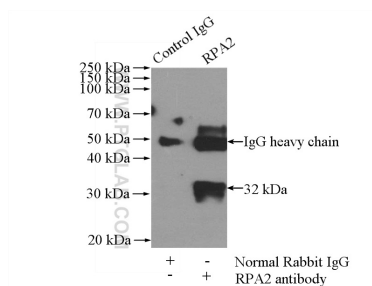
E: [Proteintech-CN@ptglab.com](mailto:Proteintech-CN@ptglab.com)W: [ptgcn.com](http://ptgcn.com)

This product is exclusively available under Proteintech Group brand and is not available to purchase from any other manufacturer.

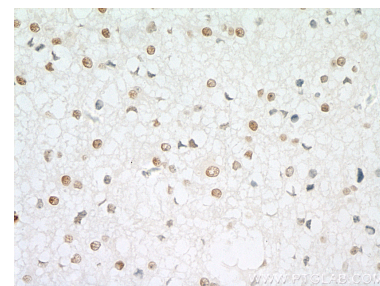
## Selected Validation Data



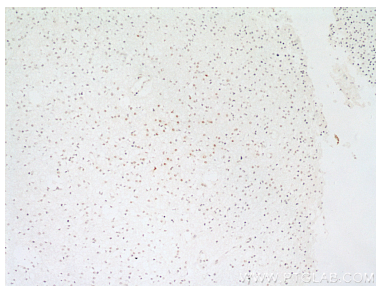
Various lysates were subjected to SDS PAGE followed by western blot with 10412-1-Ap (RPA2 antibody) at dilution of 1:3000 incubated at room temperature for 1.5 hours.



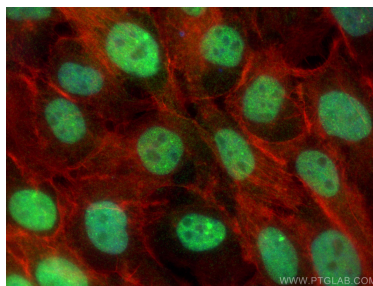
IP result of anti-RPA2 (IP:10412-1-Ap, 4 $\mu$ g; Detection:10412-1-Ap 1:1000) with mouse kidney tissue lysate 4000 $\mu$ g.



Immunohistochemical analysis of paraffin-embedded human gliomas tissue slide using 10412-1-Ap (RPA2 antibody) at dilution of 1:100 (under 40x lens)..



Immunohistochemical analysis of paraffin-embedded human gliomas tissue slide using 10412-1-Ap (RPA2 antibody) at dilution of 1:100 (under 10x lens)..



Immunofluorescent analysis of (4% PFA) fixed A431 cells using RPA2 antibody (10412-1-Ap) at dilution of 1:200 and CoraLite®488-Conjugated AffiniPure Goat Anti-Rabbit IgG(H+L), CL594-phalloidin (red).