

For Research Use Only

# STAT1 Polyclonal antibody

Catalog Number: 10144-2-AP

Featured Product

204 Publications



## Basic Information

### Catalog Number:

10144-2-AP

### Concentration:

700 ug/ml

### Source:

Rabbit

### Isotype:

IgG

### Immunogen Catalog Number:

AG0199

### GenBank Accession Number:

BC002704

### GeneID (NCBI):

6772

### UNIPROT ID:

P42224

### Full Name:

signal transducer and activator of transcription 1, 91kDa

### Calculated MW:

83 kDa

### Observed MW:

83-87 kDa

### Purification Method:

Antigen affinity purification

### Recommended Dilutions:

WB: 1:2000-1:10000

IP: 0.5-4.0 ug for 1.0-3.0 mg of total protein lysate

IHC: 1:200-1:800

IF/ICC: 1:200-1:800

FC (Intra): 0.40 ug per 10<sup>6</sup> cells in a 100 µl suspension

## Applications

### Tested Applications:

WB, IHC, IF/ICC, FC (Intra), IP, ELISA

### Cited Applications:

WB, IHC, IF, IP, CoIP, ChIP, RIP

### Species Specificity:

human

### Cited Species:

human, mouse, rat, pig, monkey, chicken

**Note-IHC: suggested antigen retrieval with TE buffer pH 9.0; (\*) Alternatively, antigen retrieval may be performed with citrate buffer pH 6.0**

### Positive Controls:

WB: A431 cells, HEK-293 cells, A549 cells, K-562 cells, PC-3 cells

IP: PC-3 cells,

IHC: human stomach tissue, human ovary cancer tissue, human testis tissue

IF/ICC: IFN alpha treated HeLa cells,

FC (Intra): MCF-7 cells,

## Background Information

STAT1 (signal transducers and activators of transcription 1) is a member of the STAT protein family. In response to cytokines and growth factors, STAT family members are phosphorylated by the receptor associated kinases, and then form homo- or heterodimers that translocate to the cell nucleus where they act as transcription activators. Various ligands, including interferons- and -, EGF, PDGF and IL-6, can activate STAT1. STAT1 protein mediates the expression of a variety of genes, which is thought to be important for cell viability in response to different cell stimuli and pathogens. This antibody is a rabbit polyclonal antibody raised against residues near the N terminus of human STAT1.

## Notable Publications

Author	Pubmed ID	Journal	Application
Xin Wen	36249018	Front Oncol	WB
Lin Deng	36170649	J Med Chem	WB
Bin Zhang	32964498	Neurochem Res	WB,IHC

## Storage

### Storage:

Store at -20°C. Stable for one year after shipment.

### Storage Buffer:

PBS with 0.02% sodium azide and 50% glycerol, pH7.3

Aliquoting is unnecessary for -20°C storage

For technical support and original validation data for this product please contact:

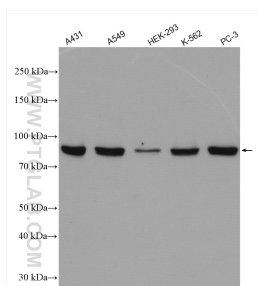
T: 4006900926

E: [Proteintech-CN@ptglab.com](mailto:Proteintech-CN@ptglab.com)

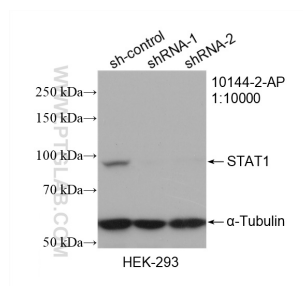
W: [ptgcn.com](http://ptgcn.com)

**This product is exclusively available under Proteintech Group brand and is not available to purchase from any other manufacturer.**

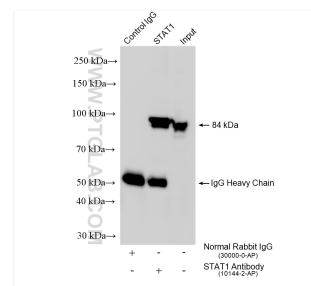
## Selected Validation Data



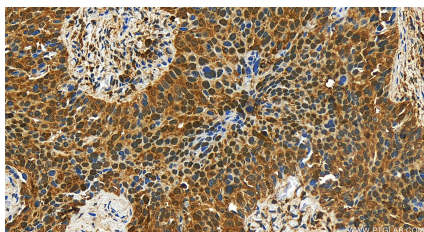
Various lysates were subjected to SDS PAGE followed by western blot with 10144-2-AP (STAT1 antibody) at dilution of 1:5000 incubated at room temperature for 1.5 hours.



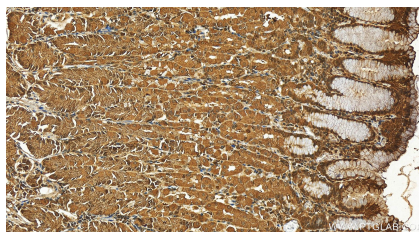
WB result of STAT1 antibody (10144-2-AP; 1:10000; incubated at room temperature for 1.5 hours) with sh-Control and sh-STAT1 transfected HEK-293 cells.



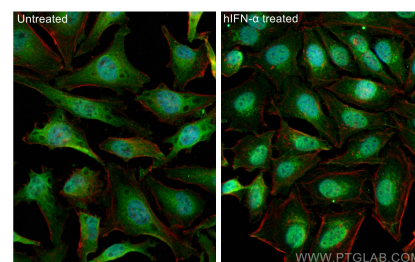
IP result of anti-STAT1 (IP: 10144-2-AP, 4ug; Detection: 10144-2-AP 1:5000) with PC-3 cells lysate 1575 ug.



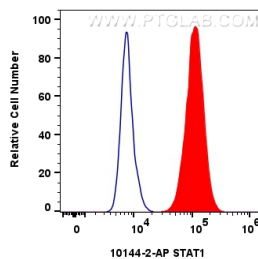
Immunohistochemical analysis of paraffin-embedded human ovary cancer tissue slide using 10144-2-AP (STAT1 antibody) at dilution of 1:400 (under 20x lens). Heat mediated antigen retrieval with Tris-EDTA buffer (pH 9.0).



Immunohistochemical analysis of paraffin-embedded human stomach tissue slide using 10144-2-AP (STAT1 antibody) at dilution of 1:400 (under 20x lens). Heat mediated antigen retrieval with Tris-EDTA buffer (pH 9.0).



Immunofluorescent analysis of (4% PFA) fixed IFN alpha treated HeLa cells using STAT1 antibody (10144-2-AP) at dilution of 1:400 and CoraLite®488-Conjugated AffiniPure Goat Anti-Rabbit IgG(H+L) (SA00013-2), CL594-phalloidin (red).



$1 \times 10^6$  MCF-7 cells were intracellularly stained with 0.4 ug Anti-Human STAT1 (10144-2-AP)(red), or 0.4 ug Rabbit IgG control Rabbit PolyAb (30000-O-AP) (blue). Cells were fixed with 4% PFA and permeabilized with Flow Cytometry Perm Buffer (PF00011-C).