

For Research Use Only

Paxillin Polyclonal antibody

Catalog Number: 10029-1-Ig **20 Publications**



Basic Information

Catalog Number:

10029-1-Ig

Concentration:

500 ug/ml

Source:

Rabbit

Isotype:

IgG

GenBank Accession Number:

NM_002859

GeneID (NCBI):

5829

UNIPROT ID:

P49023

Full Name:

paxillin

Calculated MW:

68 kDa

Observed MW:

68 kDa

Purification Method:

Protein A purification

Recommended Dilutions:

WB: 1:500-1:2000

IP: 0.5-4.0 ug for 1.0-3.0 mg of total protein lysate

IHC: 1:50-1:500

IF/ICC: 1:50-1:500

Applications

Tested Applications:

WB, IHC, IF/ICC, IP, ELISA

Cited Applications:

WB, IHC, IF

Species Specificity:

human, mouse

Cited Species:

human, mouse, rat

Note-IHC: suggested antigen retrieval with TE buffer pH 9.0; (*) Alternatively, antigen retrieval may be performed with citrate buffer pH 6.0

Positive Controls:

WB : COLO 320 cells, Jurkat cells, MCF-7 cells

IP : A431 cells,

IHC : human liver cancer tissue,

IF/ICC : HUVEC cells, NIH/3T3 cells, HepG2 cells

Background Information

PXN (paxillin) is a 68 kDa scaffold protein that interacts with multiple structural and signaling proteins and regulates cell adhesion, migration, proliferation, and apoptosis. PXN is thought to play an important role in tumor migration, invasion, and metastasis (21045234). PXN has been identified as a direct substrate of protein tyrosine phosphatase receptor-type T (PTPRT), a potent tumor suppressor gene. Increased phospho-PXN at tyrosine residue 88 (Y88) has been found as a common feature of human colon cancers (20133777).

Notable Publications

Author	Pubmed ID	Journal	Application
Zhaoyue Meng	36175399	Nat Commun	IHC
Xianhui Li	28916983	J Mater Sci Mater Med	WB
Qingxiu Yao	34708331	Mol Neurobiol	IF

Storage

Storage:

Store at -20°C. Stable for one year after shipment.

Storage Buffer:

PBS with 0.02% sodium azide and 50% glycerol, pH7.3

Aliquoting is unnecessary for -20°C storage

For technical support and original validation data for this product please contact:

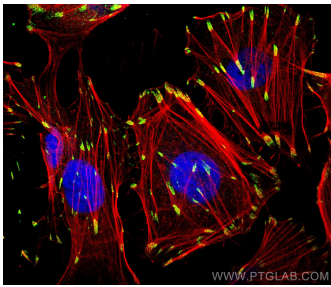
T: 4006900926

E: Proteintech-CN@ptglab.com

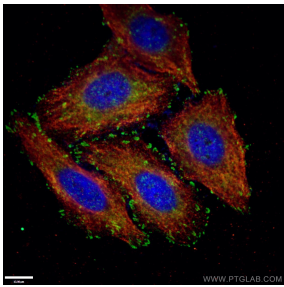
W: ptgcn.com

This product is exclusively available under Proteintech Group brand and is not available to purchase from any other manufacturer.

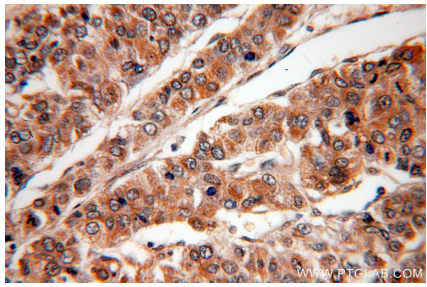
Selected Validation Data



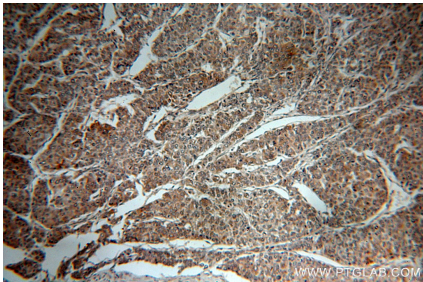
Immunofluorescent analysis of (4% PFA) fixed HUVEC cells using Paxillin antibody (10029-1-Ig) at dilution of 1:200 and CoraLite®488-Conjugated AffiniPure Goat Anti-Rabbit IgG(H+L), CL594-Phalloidin (red). DAPI (blue).



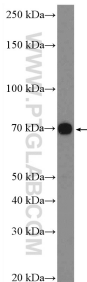
Immunofluorescent analysis of -20°C Ethanol fixed HepG2 cells using 10029-1-Ig (Paxillin antibody) at dilution of 1:50 and Alexa Fluor 488-conjugated AffiniPure Goat Anti-Rabbit IgG(H+L). The cytoskeleton was labelled in red with 66031-1-Ig (alpha tubulin). DAPI (blue).



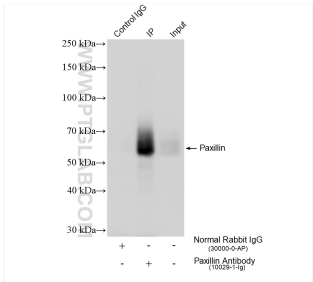
Immunohistochemical analysis of paraffin-embedded human liver cancer using 10029-1-Ig(PXN antibody) at dilution of 1:50 (under 40x lens).



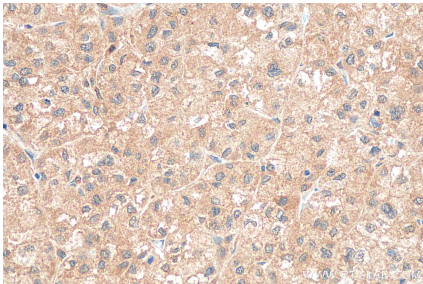
Immunohistochemical analysis of paraffin-embedded human liver cancer using 10029-1-Ig(PXN antibody) at dilution of 1:50 (under 10x lens).



COLO 320 cells were subjected to SDS PAGE followed by western blot with 10029-1-Ig (Paxillin Antibody) at dilution of 1:1000 incubated at room temperature for 1.5 hours.



IP result of anti-Paxillin (IP:10029-1-Ig, 4ug; Detection:10029-1-Ig 1:30000) with A431 cells lysate 1000 ug.



Immunohistochemical analysis of paraffin-embedded human liver cancer tissue slide using 10029-1-Ig (Paxillin antibody) at dilution of 1:200 (under 40x lens). Heat mediated antigen retrieval with Tris-EDTA buffer (pH 9.0).